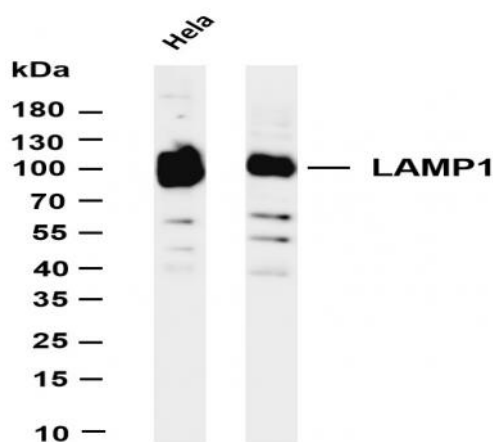


LAMP1 (PT0104R) PT® Rabbit mAb

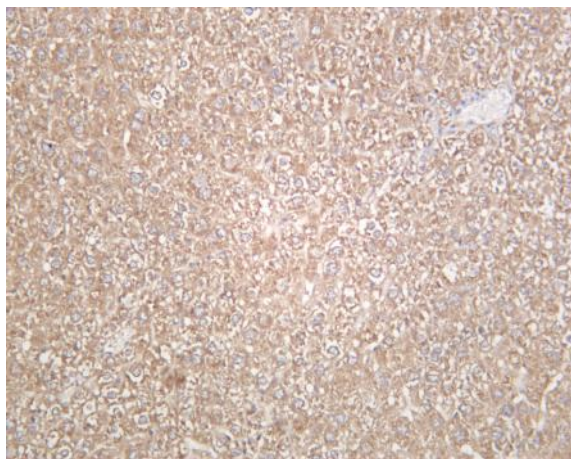
| | |
|------------------------------|---|
| Catalog No : | YM8060 |
| Reactivity : | Human; |
| Applications : | WB;IHC;IF;IP;ELISA |
| Target : | CD107a |
| Fields : | >>Autophagy - animal;>>Lysosome;>>Phagosome;>>Tuberculosis |
| Gene Name : | LAMP1 |
| Protein Name : | Lysosome-associated membrane glycoprotein 1 |
| Human Gene Id : | 3916 |
| Human Swiss Prot No : | P11279 |
| Mouse Swiss Prot No : | P11438 |
| Rat Gene Id : | 25328 |
| Rat Swiss Prot No : | P14562 |
| Specificity : | endogenous |
| Formulation : | PBS, 50% glycerol, 0.05% Proclin 300, 0.05%BSA |
| Source : | Monoclonal, rabbit, IgG, Kappa |
| Dilution : | IHC 1:200-1:1000,WB 1:1000-1:5000,IF 1:200-1:1000,ELISA 1:5000-1:20000,IP 1:50-1:200, |
| Purification : | Protein A |
| Storage Stability : | -15°C to -25°C/1 year(Do not lower than -25°C) |

Molecularweight : 45kD**Observed Band :** 100kD**Background :** The protein encoded by this gene is a member of a family of membrane glycoproteins. This glycoprotein provides selectins with carbohydrate ligands. It may also play a role in tumor cell metastasis. [provided by RefSeq, Jul 2008],**Function :** function:Presents carbohydrate ligands to selectins. Also implicated in tumor cell metastasis.,PTM:O- and N-glycosylated; some of the 18 N-linked glycans are polylactosaminoglycans.,similarity:Belongs to the LAMP family.,subcellular location:This protein shuttles between lysosomes, endosomes, and the plasma membrane.,**Subcellular Location :** Membrane**Expression :** Brain,Liver,Pancreas,Placenta,Plasma,Testis,

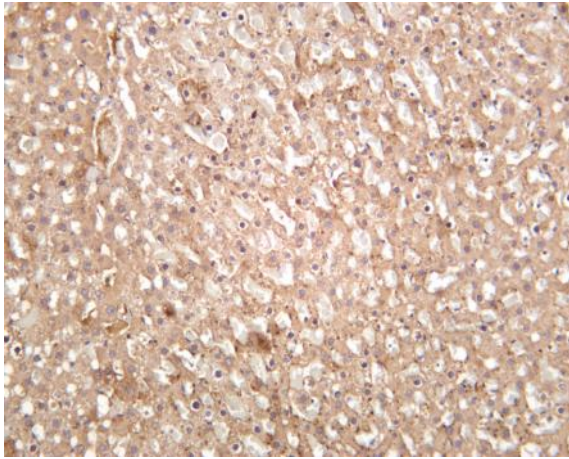
Products Images



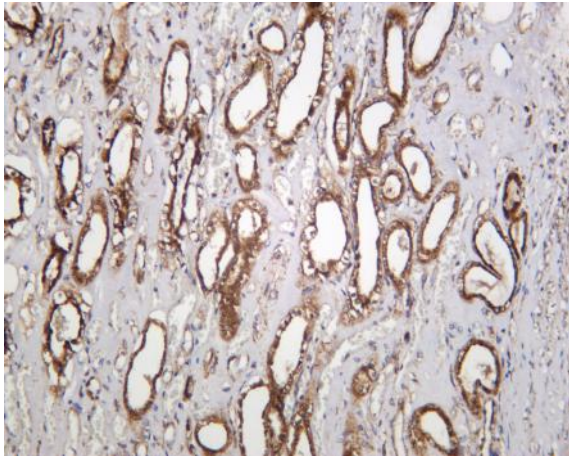
Various whole cell lysates were separated by 4-20% SDS-PAGE, and the membrane was blotted with anti-LAMP1 (PT0104R) antibody. The HRP-conjugated Goat anti-Rabbit IgG(H + L) antibody was used to detect the antibody. Lane 1: HeLa Lane 2: Jurkat Predicted band size: 45kDa Observed band size: 100kDa



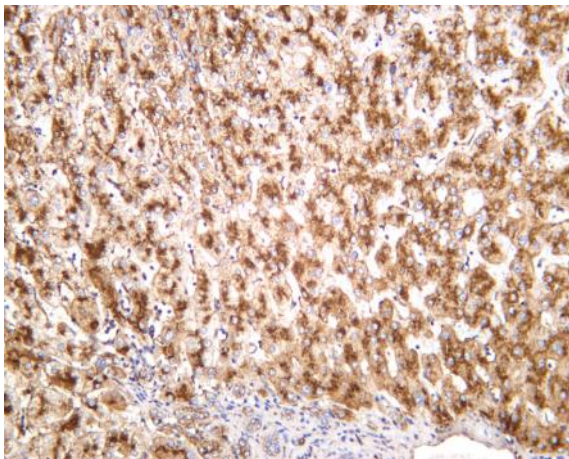
Mouse liver was stained with anti-LAMP1 (PT0104R) rabbit antibody



Rat liver was stained with anti-LAMP1 (PT0104R) rabbit antibody



Human kidney was stained with anti-LAMP1 (PT0104R) rabbit antibody



Human liver was stained with anti-LAMP1 (PT0104R) rabbit antibody