

## CANB1 Polyclonal Antibody

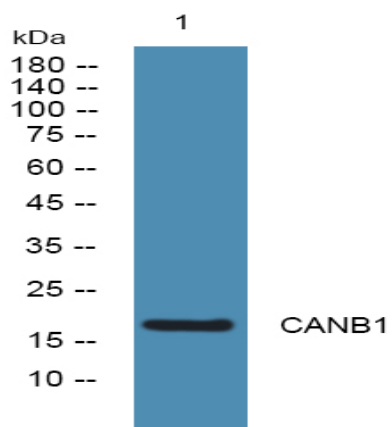
<b>Catalog No :</b>	YN0514
<b>Reactivity :</b>	Human;Mouse;Rat
<b>Applications :</b>	WB;ELISA
<b>Target :</b>	CANB1
<b>Fields :</b>	>>MAPK signaling pathway;>>Calcium signaling pathway;>>cGMP-PKG signaling pathway;>>Oocyte meiosis;>>Cellular senescence;>>Wnt signaling pathway;>>Axon guidance;>>VEGF signaling pathway;>>Osteoclast differentiation;>>C-type lectin receptor signaling pathway;>>Natural killer cell mediated cytotoxicity;>>Th1 and Th2 cell differentiation;>>Th17 cell differentiation;>>T cell receptor signaling pathway;>>B cell receptor signaling pathway;>>Long-term potentiation;>>Glutamatergic synapse;>>Oxytocin signaling pathway;>>Glucagon signaling pathway;>>Renin secretion;>>Alzheimer disease;>>Amyotrophic lateral sclerosis;>>Prion disease;>>Pathways of neurodegeneration - multiple diseases;>>Amphetamine addiction;>>Tuberculosis;>>Human cytomegalovirus infection;>>Human T-cell leukemia virus 1 infection;>>Kaposi sarcoma-associated herpesvirus infection;>>Human immunodeficiency virus 1 infection;>>PD-L1 expression and PD-1 checkpoint pathway in cancer;>>Lipid and atherosclerosis
<b>Gene Name :</b>	PPP3R1 CNA2 CNB
<b>Protein Name :</b>	Calcineurin subunit B type 1 (Protein phosphatase 2B regulatory subunit 1) (Protein phosphatase 3 regulatory subunit B alpha isoform 1)
<b>Human Gene Id :</b>	5534
<b>Human Swiss Prot No :</b>	P63098
<b>Mouse Swiss Prot No :</b>	Q63810
<b>Rat Swiss Prot No :</b>	P63100
<b>Immunogen :</b>	Synthesized peptide derived from part region of human protein
<b>Specificity :</b>	CANB1 Polyclonal Antibody detects endogenous levels of protein.

---

<b>Formulation :</b>	Liquid in PBS containing 50% glycerol, and 0.02% sodium azide.
<b>Source :</b>	Polyclonal, Rabbit,IgG
<b>Dilution :</b>	WB 1:500-2000 ELISA 1:5000-20000
<b>Purification :</b>	The antibody was affinity-purified from rabbit antiserum by affinity-chromatography using epitope-specific immunogen.
<b>Concentration :</b>	1 mg/ml
<b>Storage Stability :</b>	-15°C to -25°C/1 year(Do not lower than -25°C)
<b>Observed Band :</b>	18kD
<b>Cell Pathway :</b>	MAPK_ERK_Growth;MAPK_G_Protein;Calcium;Oocyte meiosis;Apoptosis_Inhibition;Apoptosis_Mitochondrial;Apoptosis_Overview;WNT;WNT-T CELLAxon guidance;VEGF;Natural killer cell mediated cytotoxicity;T_Cell_
<b>Background :</b>	function:Regulatory subunit of calcineurin, a calcium-dependent, calmodulin stimulated protein phosphatase. Confers calcium sensitivity.,miscellaneous:This protein has four functional calcium-binding sites.,similarity:Belongs to the calcineurin regulatory subunit family.,similarity:Contains 4 EF-hand domains.,subunit:Composed of a catalytic subunit (A) and a regulatory subunit (B).,
<b>Function :</b>	function:Regulatory subunit of calcineurin, a calcium-dependent, calmodulin stimulated protein phosphatase. Confers calcium sensitivity.,miscellaneous:This protein has four functional calcium-binding sites.,similarity:Belongs to the calcineurin regulatory subunit family.,similarity:Contains 4 EF-hand domains.,subunit:Composed of a catalytic subunit (A) and a regulatory subunit (B).,
<b>Subcellular Location :</b>	Cytoplasm, cytosol . Cell membrane . Cell membrane, sarcolemma . Cell membrane ; Lipid-anchor . Translocates from the cytosol to the sarcolemma in a CIB1-dependent manner during cardiomyocyte hypertrophy. .
<b>Expression :</b>	Blood,Fetal brain cortex,

---

## Products Images



Western blot analysis of lysates from SW480 cells, primary antibody was diluted at 1:1000, 4° over night