

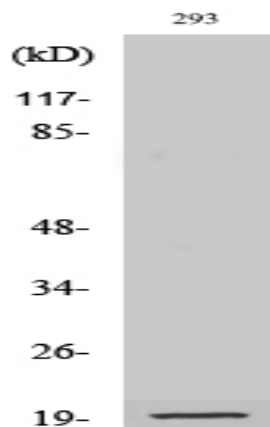
Cleaved-Bad (D71) Polyclonal Antibody

Catalog No :	YC0043
Reactivity :	Mouse;Rat
Applications :	WB;IHC;IF;ELISA
Target :	Bad
Gene Name :	BAD
Protein Name :	Bcl2 antagonist of cell death
Human Swiss Prot No :	Q92934
Mouse Gene Id :	12015
Rat Gene Id :	64639
Rat Swiss Prot No :	O35147
Immunogen :	The antiserum was produced against synthesized peptide derived from mouse BAD. AA range:21-70
Specificity :	Cleaved-Bad (D71) Polyclonal Antibody detects endogenous levels of fragment of activated Bad protein resulting from cleavage adjacent to D71.
Formulation :	Liquid in PBS containing 50% glycerol, 0.5% BSA and 0.02% sodium azide.
Source :	Polyclonal, Rabbit,IgG
Dilution :	WB 1:500 - 1:2000. IHC 1:100 - 1:300. ELISA: 1:20000.. IF 1:50-200
Purification :	The antibody was affinity-purified from rabbit antiserum by affinity-chromatography using epitope-specific immunogen.
Concentration :	1 mg/ml
Storage Stability :	-15°C to -25°C/1 year(Do not lower than -25°C)

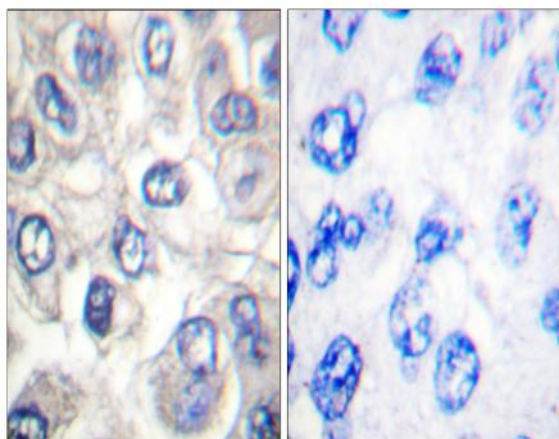
Observed Band : 20kD**Cell Pathway :** Stem cell pathway; Insulin Receptor; PI3K/Akt; ErbB/HER

Background : BCL2 associated agonist of cell death encoded by BAD is a member of the BCL-2 family. BCL-2 family members are known to be regulators of programmed cell death. BCL2 associated agonist of cell death positively regulates cell apoptosis by forming heterodimers with BCL-xL and BCL-2, and reversing their death repressor activity. Proapoptotic activity of BCL2 associated agonist of cell death is regulated through its phosphorylation. Protein kinases AKT and MAP kinase, as well as protein phosphatase calcineurin were found to be involved in the regulation of BCL2 associated agonist of cell death. Alternative splicing of BAD results in two transcript variants which encode the same isoform.

Products Images



Western Blot analysis of various cells using Cleaved-Bad (D71) Polyclonal Antibody



Immunohistochemistry analysis of paraffin-embedded human breast carcinoma tissue, using BAD (Cleaved-Asp71) Antibody. The picture on the right is blocked with the synthesized peptide.