

CD99 (PT0343R) PT® Rabbit mAb

Catalog No :	YM8202
Reactivity :	Human;
Applications :	WB;IHC;IF;IP;ELISA
Target :	CD99
Fields :	>>Cell adhesion molecules;>>Leukocyte transendothelial migration
Gene Name :	CD99 MIC2 MIC2X MIC2Y
Protein Name :	CD99
Human Gene Id :	4267
Human Swiss Prot No :	P14209
Specificity :	endogenous
Formulation :	PBS, 50% glycerol, 0.05% Proclin 300, 0.05%BSA
Source :	Monoclonal, rabbit, IgG, Kappa
Dilution :	IHC 1:200-1:1000,WB 1:1000-1:5000,IF 1:200-1:1000,ELISA 1:5000-1:20000,IP 1:50-1:200,
Purification :	Protein A
Storage Stability :	-15°C to -25°C/1 year(Do not lower than -25°C)
Molecularweight :	19kD
Observed Band :	30kD
Background :	The protein encoded by this gene is a cell surface glycoprotein involved in leukocyte migration, T-cell adhesion, ganglioside GM1 and transmembrane protein transport, and T-cell death by a caspase-independent pathway. In

addition, the encoded protein may have the ability to rearrange the actin cytoskeleton and may also act as an oncosuppressor in osteosarcoma. This gene is found in the pseudoautosomal region of chromosomes X and Y and escapes X-chromosome inactivation. There is a related pseudogene located immediately adjacent to this locus. [provided by RefSeq, Mar 2016],

Function :

function:Involved in T-cell adhesion processes. It is involved in spontaneous rosette formation with erythrocytes.,miscellaneous:The gene encoding for this protein is located in the pseudoautosomal region 1 (PAR1) of X and Y chromosomes.,PTM:Extensively O-glycosylated.,similarity:Belongs to the CD99 family.,

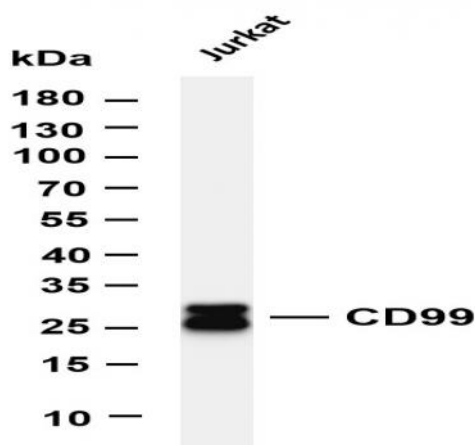
Subcellular Location :

Membrane

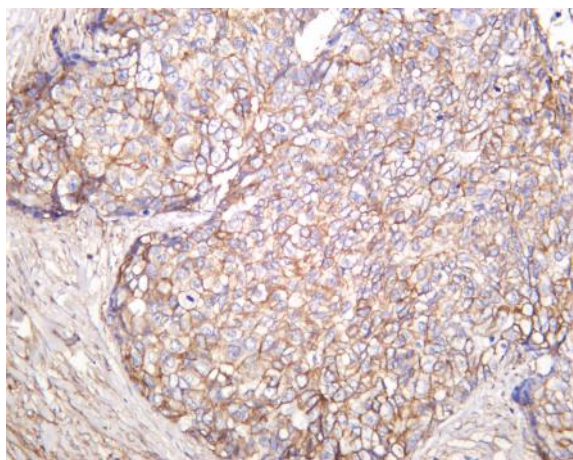
Expression :

Membranous

Products Images



Various whole cell lysates were separated by 4-20% SDS-PAGE, and the membrane was blotted with anti-CD99 (PT0343R) antibody. The HRP-conjugated Goat anti-Rabbit IgG(H + L) antibody was used to detect the antibody. Lane 1: Jurkat
 Predicted band size: 19kDa Observed band size: 30kDa



Human prostate carcinoma was stained with anti-CD99 (PT0343R) rabbit antibody