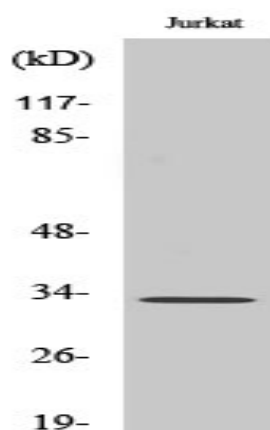


Cleaved-Cathepsin A 32k (R326) Polyclonal Antibody

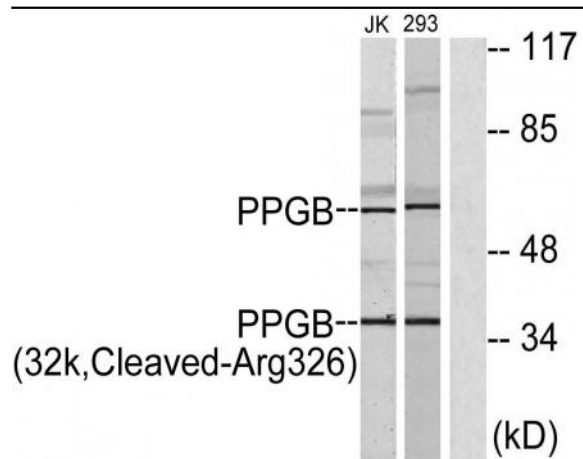
Catalog No :	YC0034
Reactivity :	Human;Mouse
Applications :	WB;ELISA
Target :	Cathepsin A
Fields :	>>Lysosome;>>Renin-angiotensin system
Gene Name :	CTSA
Protein Name :	Lysosomal protective protein
Human Gene Id :	5476
Human Swiss Prot No :	P10619
Mouse Gene Id :	19025
Mouse Swiss Prot No :	P16675
Immunogen :	The antiserum was produced against synthesized peptide derived from human PPGB. AA range:277-326
Specificity :	Cleaved-Cathepsin A 32k (R326) Polyclonal Antibody detects endogenous levels of fragment of activated Cathepsin A 32k protein resulting from cleavage adjacent to R326.
Formulation :	Liquid in PBS containing 50% glycerol, 0.5% BSA and 0.02% sodium azide.
Source :	Polyclonal, Rabbit,IgG
Dilution :	WB 1:500 - 1:2000. ELISA: 1:10000. Not yet tested in other applications.
Purification :	The antibody was affinity-purified from rabbit antiserum by affinity-chromatography using epitope-specific immunogen.

Concentration :	1 mg/ml
Storage Stability :	-15°C to -25°C/1 year(Do not lower than -25°C)
Observed Band :	33kD
Cell Pathway :	Lysosome;Renin-angiotensin system;
Background :	This gene encodes a member of the peptidase S10 family of serine carboxypeptidases. Alternative splicing results in multiple transcript variants, at least one of which encodes a preproprotein that is proteolytically processed to generate two chains that comprise the heterodimeric active enzyme. This enzyme possesses deamidase, esterase and carboxypeptidase activities and acts as a scaffold in the lysosomal multienzyme complex. Mutations in this gene are associated with galactosialidosis. [provided by RefSeq, Nov 2015],
Function :	catalytic activity:Release of a C-terminal amino acid with broad specificity.,disease:Defects in CTSA are the cause of galactosialidosis [MIM:256540]. It is an autosomal recessive disease.,function:Protective protein appears to be essential for both the activity of beta-galactosidase and neuraminidase, it associates with these enzymes and exerts a protective function necessary for their stability and activity. This protein is also a carboxypeptidase and can deamidate tachykinins.,similarity:Belongs to the peptidase S10 family.,subunit:Heterodimer of a 32 kDa chain and a 20 kDa chain; disulfide-linked.,
Subcellular Location :	Lysosome.
Expression :	Brain,Liver,Placenta,Platelet,Skin,Uterus,

Products Images



Western Blot analysis of various cells using Cleaved-Cathepsin A 32k (R326) Polyclonal Antibody



Western blot analysis of lysates from 293 and Jurkat cells, treated with etoposide 25uM 1h, using PPGB (32k,Cleaved-Arg326) Antibody. The lane on the right is blocked with the synthesized peptide.