

**Cleaved-ITI-H4 70k (R661) Polyclonal Antibody**

<b>Catalog No :</b>	YC0095
<b>Reactivity :</b>	Human;Rat;Mouse;
<b>Applications :</b>	IHC;IF;ELISA
<b>Target :</b>	ITI-H4 70k
<b>Gene Name :</b>	ITIH4
<b>Protein Name :</b>	Inter-alpha-trypsin inhibitor heavy chain H4
<b>Human Gene Id :</b>	3700
<b>Human Swiss Prot No :</b>	Q14624
<b>Immunogen :</b>	The antiserum was produced against synthesized peptide derived from human ITIH4. AA range:612-661
<b>Specificity :</b>	Cleaved-ITI-H4 70k (R661) Polyclonal Antibody detects endogenous levels of fragment of activated ITI-H4 70k protein resulting from cleavage adjacent to R661.
<b>Formulation :</b>	Liquid in PBS containing 50% glycerol, 0.5% BSA and 0.02% sodium azide.
<b>Source :</b>	Polyclonal, Rabbit,IgG
<b>Dilution :</b>	IHC 1:100 - 1:300. ELISA: 1:10000.. IF 1:50-200
<b>Purification :</b>	The antibody was affinity-purified from rabbit antiserum by affinity-chromatography using epitope-specific immunogen.
<b>Concentration :</b>	1 mg/ml
<b>Storage Stability :</b>	-15°C to -25°C/1 year(Do not lower than -25°C)
<b>Molecularweight :</b>	103kD

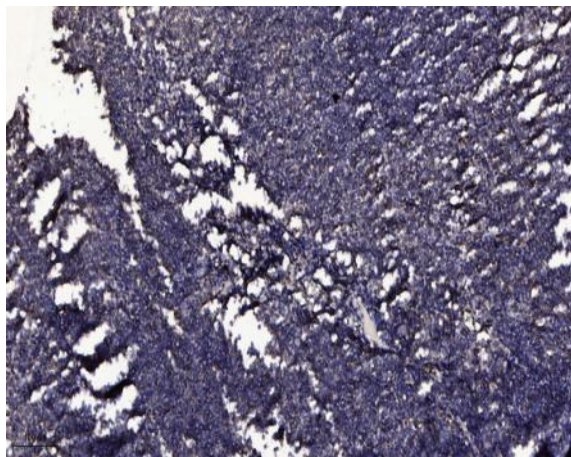
**Background :** The protein encoded by this gene is secreted into the blood, where it is cleaved by plasma kallikrein into two smaller forms. Expression of this gene has been detected only in liver, and it seems to be upregulated during surgical trauma. This gene is part of a cluster of similar genes on chromosome 3. Two transcript variants encoding different isoforms have been found for this gene. [provided by RefSeq, Oct 2009],

**Function :** function:May be involved in acute phase reactions.,induction:Levels increase significantly in the sera of patients after different surgical trauma.,PTM:Appears to be both N- and O-glycosylated.,PTM:Cleaved by plasma kallikrein to yield 100 kDa and 35 kDa fragments, and the resulting 100 kDa fragment is further converted to a 70 kDa fragment.,PTM:The O-linked polysaccharides on Ser-696, Thr-701 and Ser-702 are probably the mucin type linked to GalNAc.,similarity:Belongs to the ITIH family.,similarity:Contains 1 VWFA domain.,tissue specificity:Liver specific.,

**Subcellular Location :** Secreted.

**Expression :** Liver specific.

## Products Images



Immunohistochemical analysis of paraffin-embedded human tonsil. 1, Antibody was diluted at 1:200(4° overnight). 2, Tris-EDTA,pH9.0 was used for antigen retrieval. 3,Secondary antibody was diluted at 1:200(room temperature, 30min).