

## ITIH4 (80k, Cleaved-Arg689) rabbit pAb

<b>Catalog No :</b>	YC0109
<b>Reactivity :</b>	Human;Rat;Mouse;
<b>Applications :</b>	WB;IHC
<b>Target :</b>	ITIH4
<b>Gene Name :</b>	ITIH4 IHRP ITIHL1 PK120 PRO1851
<b>Protein Name :</b>	ITIH4 (80k, Cleaved-Arg689)
<b>Human Gene Id :</b>	3700
<b>Human Swiss Prot No :</b>	Q14624
<b>Immunogen :</b>	Synthesized peptide derived from human ITIH4 (80k, Cleaved-Arg689)
<b>Specificity :</b>	This antibody detects endogenous levels of Human ITIH4 (80k, Cleaved-Arg689)
<b>Formulation :</b>	Liquid in PBS containing 50% glycerol, 0.5% BSA and 0.02% sodium azide.
<b>Source :</b>	Polyclonal, Rabbit,IgG
<b>Dilution :</b>	WB 1:500-2000;IHC 1:50-300
<b>Purification :</b>	The antibody was affinity-purified from rabbit serum by affinity-chromatography using specific immunogen.
<b>Concentration :</b>	1 mg/ml
<b>Storage Stability :</b>	-15°C to -25°C/1 year(Do not lower than -25°C)
<b>Observed Band :</b>	80 100kD
<b>Background :</b>	#REF!

**Function :** #REF!

---

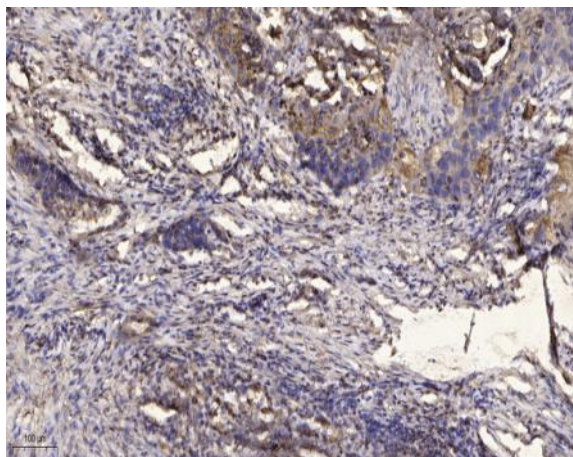
**Subcellular Location :** Secreted.

---

**Expression :** Liver specific.

---

## Products Images



Immunohistochemical analysis of paraffin-embedded human Squamous cell carcinoma of lung. 1, Antibody was diluted at 1:200(4° overnight). 2, Tris-EDTA,pH9.0 was used for antigen retrieval. 3,Secondary antibody was diluted at 1:200(room temperature, 45min).