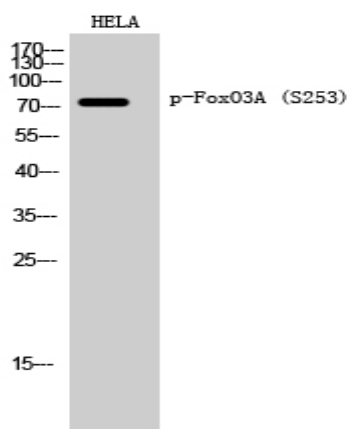


## FoxO3A (phospho Ser253) Polyclonal Antibody

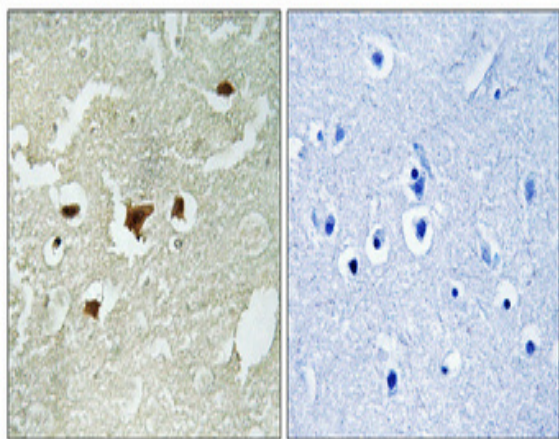
|                              |   |
|------------------------------|---|
| <b>Catalog No :</b>          | YP0115  |
| <b>Reactivity :</b>          | Human;Mouse;Rat;Zebrafish   |
| <b>Applications :</b>        | WB;IHC;IF;ELISA   |
| <b>Target :</b>              | FoxO3A  |
| <b>Fields :</b>              | >>EGFR tyrosine kinase inhibitor resistance;>>Chemokine signaling pathway;>>FoxO signaling pathway;>>Mitophagy - animal;>>PI3K-Akt signaling pathway;>>AMPK signaling pathway;>>Longevity regulating pathway;>>Longevity regulating pathway - multiple species;>>Cellular senescence;>>Neurotrophin signaling pathway;>>Prolactin signaling pathway;>>Alcoholic liver disease;>>Shigellosis;>>Chemical carcinogenesis - reactive oxygen species;>>Endometrial cancer;>>Non-small cell lung cancer |
| <b>Gene Name :</b>           | FOXO3   |
| <b>Protein Name :</b>        | Forkhead box protein O3   |
| <b>Human Gene Id :</b>       | 2309  |
| <b>Human Swiss Prot No :</b> | O43524  |
| <b>Mouse Gene Id :</b>       | 56484   |
| <b>Mouse Swiss Prot No :</b> | Q9WVH4  |
| <b>Immunogen :</b>           | The antiserum was produced against synthesized peptide derived from human FKHL1 around the phosphorylation site of Ser253. AA range:220-269   |
| <b>Specificity :</b>         | Phospho-FoxO3A (S253) Polyclonal Antibody detects endogenous levels of FoxO3A protein only when phosphorylated at S253.   |
| <b>Formulation :</b>         | Liquid in PBS containing 50% glycerol, 0.5% BSA and 0.02% sodium azide.   |
| <b>Source :</b>              | Polyclonal, Rabbit,IgG  |
|                              | WB 1:500 - 1:2000. IHC 1:100 - 1:300. IF 1:200 - 1:1000. ELISA: 1:20000. Not  |

|                               |   |
|-------------------------------|---|
| <b>Dilution :</b>             | yet tested in other applications.   |
| <b>Purification :</b>         | The antibody was affinity-purified from rabbit antiserum by affinity-chromatography using epitope-specific immunogen.   |
| <b>Concentration :</b>        | 1 mg/ml   |
| <b>Storage Stability :</b>    | -15 °C to -25 °C/1 year(Do not lower than -25 °C)   |
| <b>Observed Band :</b>        | 90kD  |
| <b>Cell Pathway :</b>         | Insulin Receptor; B Cell Receptor; PI3K/Akt; Protein_Acetylation  |
| <b>Background :</b>           | This gene belongs to the forkhead family of transcription factors which are characterized by a distinct forkhead domain. This gene likely functions as a trigger for apoptosis through expression of genes necessary for cell death. Translocation of this gene with the MLL gene is associated with secondary acute leukemia. Alternatively spliced transcript variants encoding the same protein have been observed. [provided by RefSeq, Jul 2008],  |
| <b>Function :</b>             | disease:A chromosomal aberration involving FOXO3 is found in secondary acute leukemias. Translocation t(6;11)(q21;q23) with MLL/HRX.,function:Transcriptional activator which triggers apoptosis in the absence of survival factors, including neuronal cell death upon oxidative stress. Recognizes and binds to the DNA sequence 5'-[AG]TAAA[TC]A-3'.PTM:In the presence of survival factors such as IGF-1, phosphorylated on Thr-32 and Ser-253 by AKT1/PKB. This phosphorylated form then interacts with 14-3-3 proteins and is retained in the cytoplasm. Survival factor withdrawal induces dephosphorylation and promotes translocation to the nucleus where the dephosphorylated protein induces transcription of target genes and triggers apoptosis. Although AKT1/PKB doesn't appear to phosphorylate Ser-315 directly, it may activate other kinases that trigger phosphorylation at this residue. Phosphorylated by ST |
| <b>Subcellular Location :</b> | Cytoplasm, cytosol . Nucleus . Mitochondrion matrix . Mitochondrion outer membrane ; Peripheral membrane protein ; Cytoplasmic side . Retention in the cytoplasm contributes to its inactivation (PubMed:10102273, PubMed:15084260, PubMed:16751106). Translocates to the nucleus upon oxidative stress and in the absence of survival factors (PubMed:10102273, PubMed:16751106). Translocates from the cytosol to the nucleus following dephosphorylation in response to autophagy-inducing stimuli (By similarity). Translocates in a AMPK-dependent manner into the mitochondrion in response to metabolic stress (PubMed:23283301, PubMed:29445193). Serum deprivation increases localization to the nucleus, leading to activate expression of SOX9 and subsequent chondrogenesis (By similarity). .  |
| <b>Expression :</b>           | Ubiquitous.   |

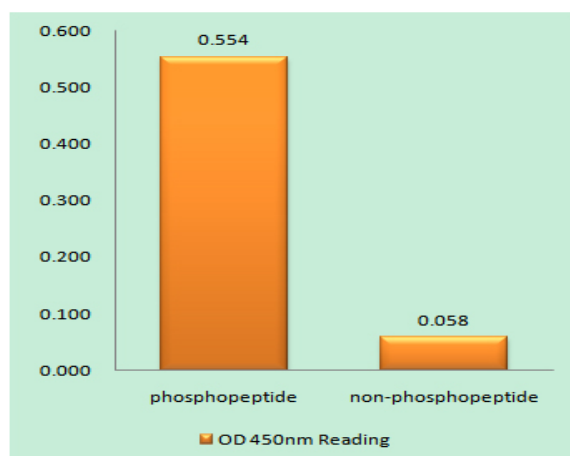
## Products Images



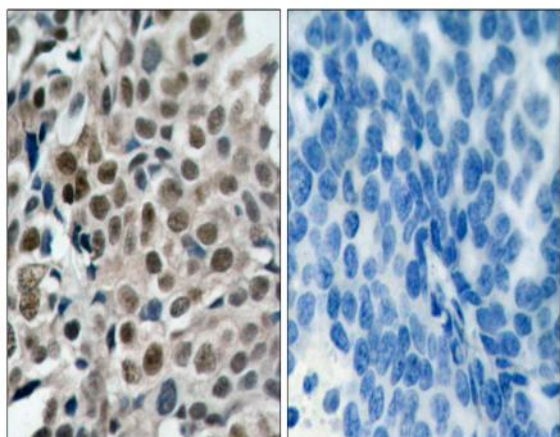
Western Blot analysis of HELA cells using Phospho-FoxO3A (S253) Polyclonal Antibody diluted at 1:2000



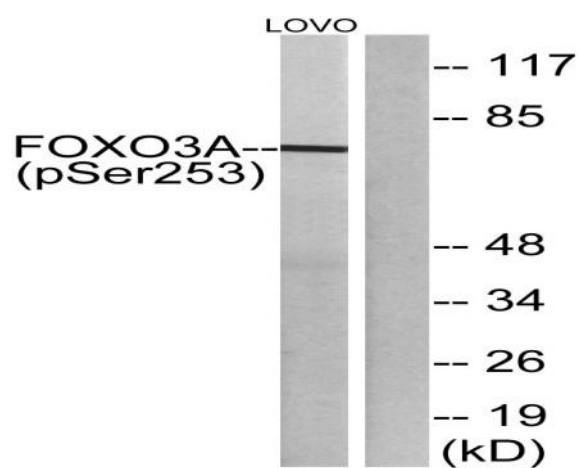
Immunohistochemical analysis of paraffin-embedded Human brain. Antibody was diluted at 1:100(4° overnight). High-pressure and temperature Tris-EDTA,pH8.0 was used for antigen retrieval. Negative ctrl (right) obtained from antibody was pre-absorbed by immunogen peptide.



Enzyme-Linked Immunosorbent Assay (Phospho-ELISA) for Immunogen Phosphopeptide (Phospho-left) and Non-Phosphopeptide (Phospho-right), using FKHRL1 (Phospho-Ser253) Antibody



Immunohistochemistry analysis of paraffin-embedded human breast carcinoma, using FKHRL1 (Phospho-Ser253) Antibody. The picture on the right is blocked with the phospho peptide.



Western blot analysis of lysates from LOVO cells treated with serum 20% 30', using FKHRL1 (Phospho-Ser253) Antibody. The lane on the right is blocked with the phospho peptide.