

**ITGAE (light chain, Cleaved-Arg177) rabbit pAb**

|                              |  |
|------------------------------|--|
| <b>Catalog No :</b>          | YC0173   |
| <b>Reactivity :</b>          | Human;Rat;Mouse;   |
| <b>Applications :</b>        | WB;IHC   |
| <b>Target :</b>              | ITGAE  |
| <b>Fields :</b>              | >>Regulation of actin cytoskeleton   |
| <b>Gene Name :</b>           | ITGAE  |
| <b>Protein Name :</b>        | ITGAE (light chain, Cleaved-Arg177)  |
| <b>Human Gene Id :</b>       | 3682   |
| <b>Human Swiss Prot No :</b> | P38570   |
| <b>Mouse Gene Id :</b>       | 16407  |
| <b>Mouse Swiss Prot No :</b> | Q60677   |
| <b>Immunogen :</b>           | Synthesized peptide derived from human ITGAE (light chain, Cleaved-Arg177)   |
| <b>Specificity :</b>         | This antibody detects endogenous levels of Human ITGAE (light chain, Cleaved-Arg177, protein was cleaved amino acid sequence between 177-178 ) |
| <b>Formulation :</b>         | Liquid in PBS containing 50% glycerol, 0.5% BSA and 0.02% sodium azide.  |
| <b>Source :</b>              | Polyclonal, Rabbit,IgG   |
| <b>Dilution :</b>            | WB 1:500-2000;IHC 1:50-300   |
| <b>Purification :</b>        | The antibody was affinity-purified from rabbit serum by affinity-chromatography using specific immunogen.                                      |
| <b>Concentration :</b>       | 1 mg/ml  |

---

**Storage Stability :** -15°C to -25°C/1 year(Do not lower than -25°C)

---

**Observed Band :** 17 128kD

---

**Background :** integrin subunit alpha E(ITGAE) Homo sapiens Integrins are heterodimeric integral membrane proteins composed of an alpha chain and a beta chain. This gene encodes an I-domain-containing alpha integrin that undergoes post-translational cleavage in the extracellular domain, yielding disulfide-linked heavy and light chains. In combination with the beta 7 integrin, this protein forms the E-cadherin binding integrin known as the human mucosal lymphocyte-1 antigen. This protein is preferentially expressed in human intestinal intraepithelial lymphocytes (IEL), and in addition to a role in adhesion, it may serve as an accessory molecule for IEL activation. [provided by RefSeq, Jul 2008],

---

**Function :** domain:The integrin I-domain (insert) is a VWFA domain. Integrins with I-domains do not undergo protease cleavage.,function:Integrin alpha-E/beta-7 is a receptor for E-cadherin. It mediates adhesion of intra-epithelial T-lymphocytes to epithelial cell monolayers.,induction:Integrin alpha-E/beta-7 is induced by TGFB1.,similarity:Belongs to the integrin alpha chain family.,similarity:Contains 1 VWFA domain.,similarity:Contains 5 FG-GAP repeats.,subunit:Heterodimer of an alpha and a beta subunit. The alpha subunit is composed of an heavy and a light chains linked by a disulfide bond. Alpha-E associates with beta-7.,tissue specificity:Expressed on a subclass of T-lymphocytes known as intra-epithelial lymphocytes which are located between mucosal epithelial cells.,

---

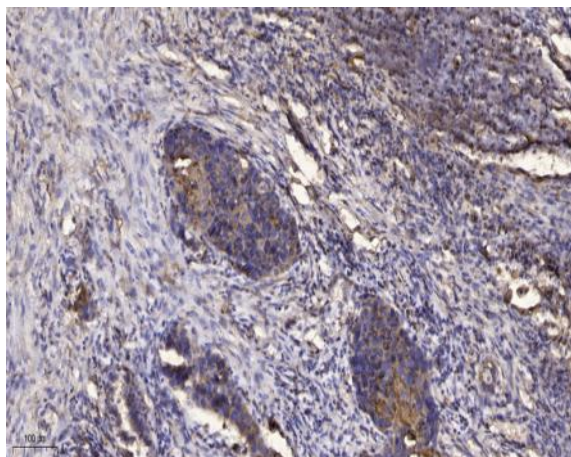
**Subcellular Location :** Membrane; Single-pass type I membrane protein.

---

**Expression :** Expressed on a subclass of T-lymphocytes known as intra-epithelial lymphocytes which are located between mucosal epithelial cells.

---

## Products Images



Immunohistochemical analysis of paraffin-embedded human Squamous cell carcinoma of lung. 1, Antibody was diluted at 1:200(4° overnight). 2, Tris-EDTA,pH9.0 was used for antigen retrieval. 3,Secondary antibody was diluted at 1:200(room temperature, 45min).