

## Jun D (phospho Ser255) Polyclonal Antibody

<b>Catalog No :</b>	YP0160
<b>Reactivity :</b>	Human;Mouse;Rat
<b>Applications :</b>	WB;IHC;IF;IP;ELISA
<b>Target :</b>	Jun D
<b>Fields :</b>	>>MAPK signaling pathway;>>Osteoclast differentiation;>>IL-17 signaling pathway;>>Parathyroid hormone synthesis, secretion and action
<b>Gene Name :</b>	JUND
<b>Protein Name :</b>	Transcription factor jun-D
<b>Human Gene Id :</b>	3727
<b>Human Swiss Prot No :</b>	P17535
<b>Mouse Gene Id :</b>	16478
<b>Mouse Swiss Prot No :</b>	P15066
<b>Rat Gene Id :</b>	24518
<b>Rat Swiss Prot No :</b>	P52909
<b>Immunogen :</b>	The antiserum was produced against synthesized peptide derived from human JunD around the phosphorylation site of Ser255. AA range:222-271
<b>Specificity :</b>	Phospho-Jun D (S255) Polyclonal Antibody detects endogenous levels of Jun D protein only when phosphorylated at S255.
<b>Formulation :</b>	Liquid in PBS containing 50% glycerol, 0.5% BSA and 0.02% sodium azide.
<b>Source :</b>	Polyclonal, Rabbit,IgG
<b>Dilution :</b>	WB 1:500 - 1:2000. IHC 1:100 - 1:300. Immunoprecipitation: 2-5 ug:mg lysate.

---

ELISA: 1:20000.. IF 1:50-200

---

**Purification :** The antibody was affinity-purified from rabbit antiserum by affinity-chromatography using epitope-specific immunogen.

---

**Concentration :** 1 mg/ml

---

**Storage Stability :** -15°C to -25°C/1 year(Do not lower than -25°C)

---

**Molecularweight :** 35kD

---

**Cell Pathway :** MAPK\_ERK\_Growth;MAPK\_G\_Protein;

---

**Background :** The protein encoded by this intronless gene is a member of the JUN family, and a functional component of the AP1 transcription factor complex. This protein has been proposed to protect cells from p53-dependent senescence and apoptosis. Alternative translation initiation site usage results in the production of different isoforms (PMID:12105216). [provided by RefSeq, Nov 2013],

---

**Function :** function: Binds an AP-1 site and upon cotransfection stimulates the activity of a promoter that bears an AP-1 site., similarity: Belongs to the bZIP family. Jun subfamily., similarity: Contains 1 bZIP domain., subunit: Binds DNA as a dimer.,

---

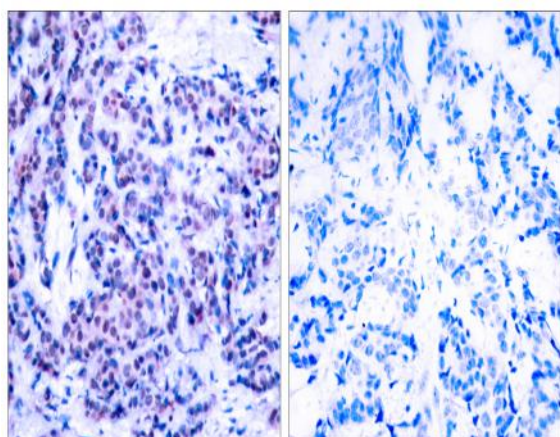
**Subcellular Location :** Nucleus.

---

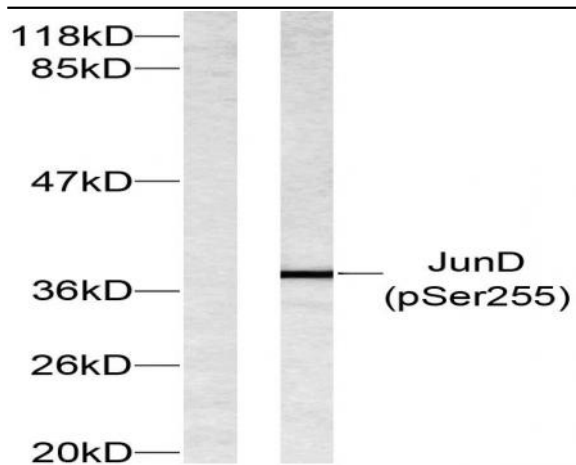
**Expression :** Epithelium, Spleen,

---

## Products Images



Immunohistochemistry analysis of paraffin-embedded human breast carcinoma, using JunD (Phospho-Ser255) Antibody. The picture on the right is blocked with the phospho peptide.



Western blot analysis of lysates from 293 cells treated with Forskolin, using JunD (Phospho-Ser255) Antibody. The lane on the left is blocked with the phospho peptide.