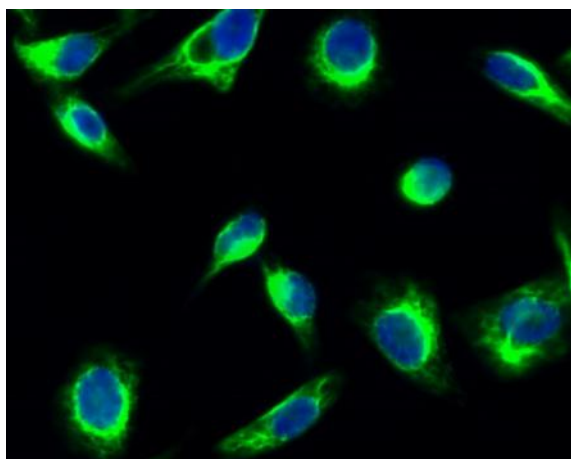


**GSK3 $\alpha$ / $\beta$  (phospho Tyr279/216) Polyclonal Antibody**

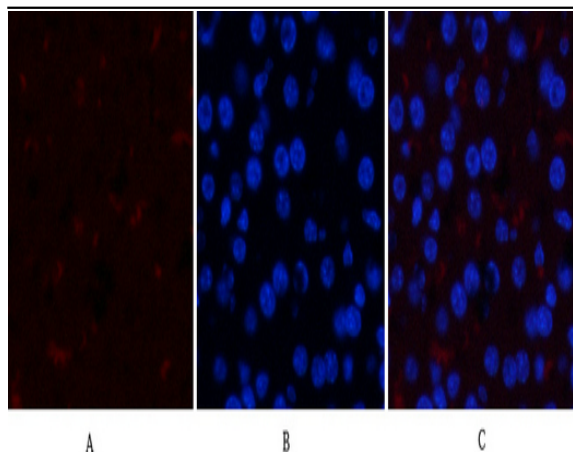
<b>Catalog No :</b>	YP0123
<b>Reactivity :</b>	Human;Mouse;Rat
<b>Applications :</b>	IF;WB;IHC;ELISA
<b>Target :</b>	GSK3 $\alpha$ / $\beta$
<b>Fields :</b>	>>Chemokine signaling pathway;>>Dopaminergic synapse;>>Non-alcoholic fatty liver disease;>>Shigellosis
<b>Gene Name :</b>	GSK3A/GSK3B
<b>Protein Name :</b>	Glycogen synthase kinase-3 alpha/beta
<b>Human Gene Id :</b>	2931
<b>Human Swiss Prot No :</b>	P49840/P49841
<b>Mouse Gene Id :</b>	606496/56637
<b>Rat Gene Id :</b>	50686/84027
<b>Rat Swiss Prot No :</b>	P18265/P18266
<b>Immunogen :</b>	The antiserum was produced against synthesized peptide derived from human GSK3 alpha/beta around the phosphorylation site of Tyr279/216. AA range:246-295
<b>Specificity :</b>	Phospho-GSK3 $\alpha$ / $\beta$ (Y279/216) Polyclonal Antibody detects endogenous levels of GSK3 $\alpha$ / $\beta$ protein only when phosphorylated at Y279/216.
<b>Formulation :</b>	Liquid in PBS containing 50% glycerol, 0.5% BSA and 0.02% sodium azide.
<b>Source :</b>	Polyclonal, Rabbit,IgG
<b>Dilution :</b>	IF 1:50-200 WB 1:500 - 1:2000. IHC 1:100 - 1:300. ELISA: 1:20000. Not yet tested in other applications.

<b>Purification :</b>	The antibody was affinity-purified from rabbit antiserum by affinity-chromatography using epitope-specific immunogen.
<b>Concentration :</b>	1 mg/ml
<b>Storage Stability :</b>	-15°C to -25°C/1 year(Do not lower than -25°C)
<b>Observed Band :</b>	51,46kD
<b>Cell Pathway :</b>	Chemokine;
<b>Background :</b>	glycogen synthase kinase 3 alpha(GSK3A) Homo sapiens This gene encodes a multifunctional Ser/Thr protein kinase that is implicated in the control of several regulatory proteins including glycogen synthase, and transcription factors, such as JUN. It also plays a role in the WNT and PI3K signaling pathways, as well as regulates the production of beta-amyloid peptides associated with Alzheimer's disease. [provided by RefSeq, Oct 2011],
<b>Function :</b>	catalytic activity:ATP + [tau protein] = ADP + [tau protein] phosphate.,function:Implicated in the hormonal control of several regulatory proteins including glycogen synthase, MYB and the transcription factor JUN.,similarity:Belongs to the protein kinase superfamily.,similarity:Belongs to the protein kinase superfamily. CMGC Ser/Thr protein kinase family. GSK-3 subfamily.,similarity:Contains 1 protein kinase domain.,subunit:Monomer.,
<b>Subcellular Location :</b>	apical dendrite;axon;beta-catenin destruction complex;cytoplasm;cytosol;mitochondrion;neuronal cell body;nucleus;postsynapse;proximal dendrite;
<b>Expression :</b>	Brain,Eye,Foreskin,Lung,Pancreas,Platelet,Testis,

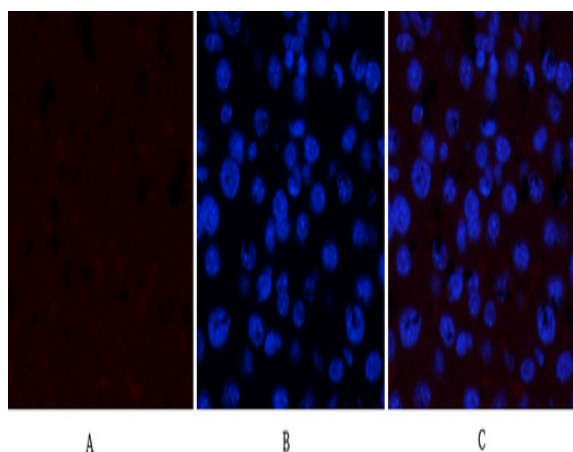
## Products Images



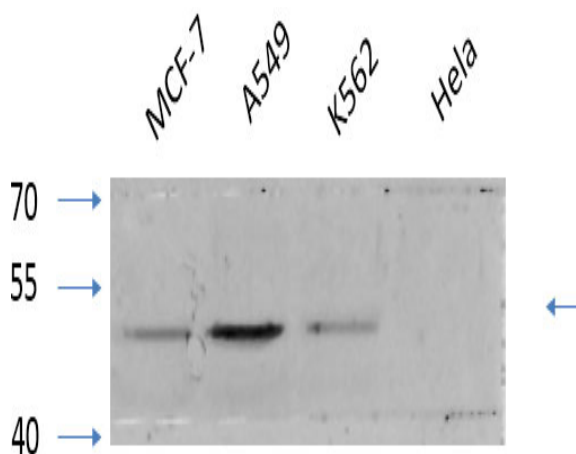
Immunofluorescence analysis of Hela cell. 1, GSK3 $\alpha/\beta$  (phospho Tyr279/216) Polyclonal Antibody(green) was diluted at 1:200(4° overnight). 2, Goat Anti Rabbit Alexa Fluor 488 Catalog:RS3211 was diluted at 1:1000(room temperature, 50min). 3 DAPI(blue) 10min.



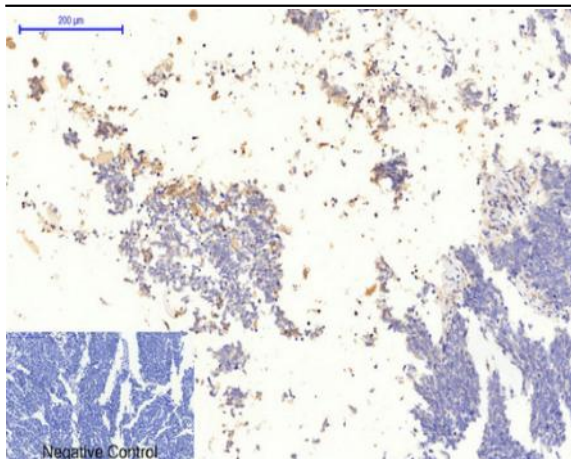
Immunofluorescence analysis of mouse-liver tissue. 1, GSK3 $\alpha/\beta$  (phospho Tyr279/216) Polyclonal Antibody (red) was diluted at 1:200 (4°C, overnight). 2, Cy3 labeled Secondary antibody was diluted at 1:300 (room temperature, 50 min). 3, Picture B: DAPI (blue) 10 min. Picture A: Target. Picture B: DAPI. Picture C: merge of A+B



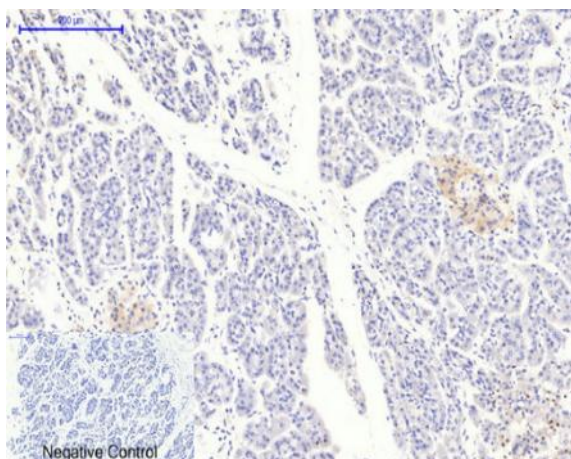
Immunofluorescence analysis of mouse-liver tissue. 1, GSK3 $\alpha/\beta$  (phospho Tyr279/216) Polyclonal Antibody (red) was diluted at 1:200 (4°C, overnight). 2, Cy3 labeled Secondary antibody was diluted at 1:300 (room temperature, 50 min). 3, Picture B: DAPI (blue) 10 min. Picture A: Target. Picture B: DAPI. Picture C: merge of A+B



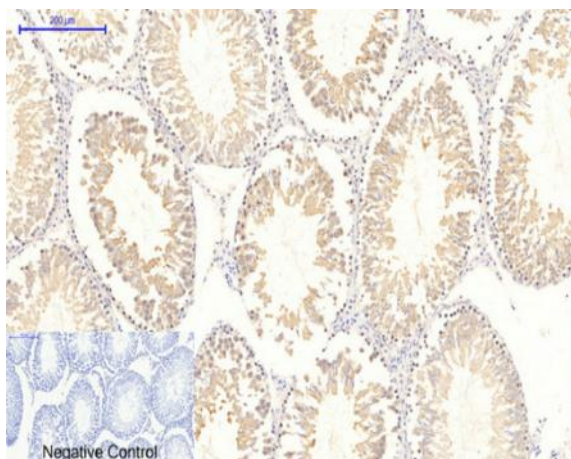
Western Blot analysis of various cells using primary antibody diluted at 1:1000 (4°C overnight). Secondary antibody: Goat Anti-rabbit IgG IRDye 800 (diluted at 1:5000, 25°C, 1 hour). Cell lysate was extracted by Minute™ Plasma Membrane Protein Isolation and Cell Fractionation Kit (SM-005, Inventibiotec, MN, USA).



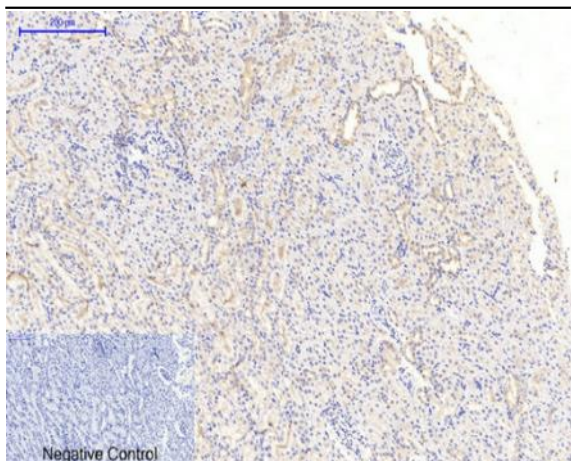
Immunohistochemical analysis of paraffin-embedded Human-lung-cancer tissue. 1, GSK3 $\alpha/\beta$  (phospho Tyr279/216) Polyclonal Antibody was diluted at 1:200(4 °C, overnight). 2, Sodium citrate pH 6.0 was used for antibody retrieval(>98 °C, 20min). 3, Secondary antibody was diluted at 1:200(room temperature, 30min). Negative control was used by secondary antibody only.



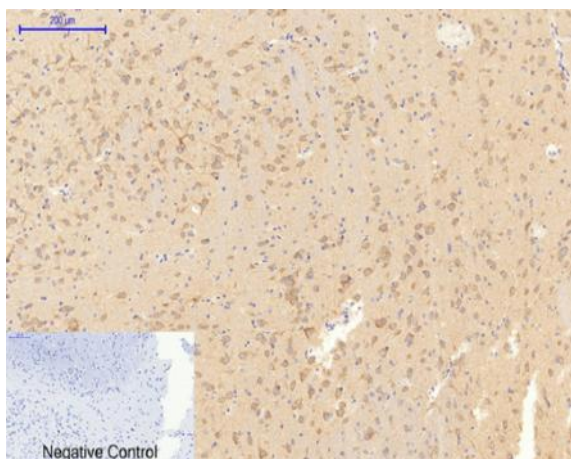
Immunohistochemical analysis of paraffin-embedded Human-stomach-cancer tissue. 1, GSK3 $\alpha/\beta$  (phospho Tyr279/216) Polyclonal Antibody was diluted at 1:200(4 °C, overnight). 2, Sodium citrate pH 6.0 was used for antibody retrieval(>98 °C, 20min). 3, Secondary antibody was diluted at 1:200(room temperature, 30min). Negative control was used by secondary antibody only.



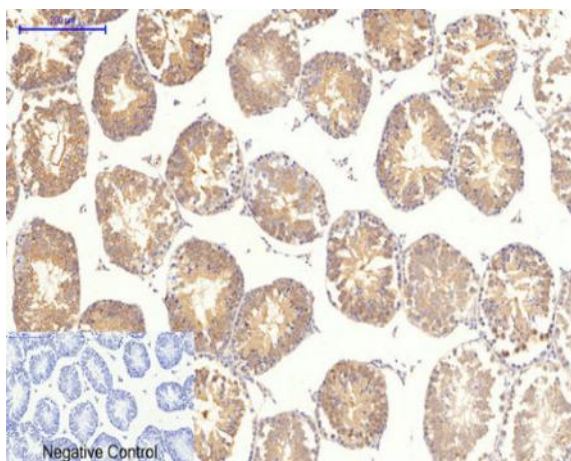
Immunohistochemical analysis of paraffin-embedded Rat-testis tissue. 1, GSK3 $\alpha/\beta$  (phospho Tyr279/216) Polyclonal Antibody was diluted at 1:200(4 °C, overnight). 2, Sodium citrate pH 6.0 was used for antibody retrieval(>98 °C, 20min). 3, Secondary antibody was diluted at 1:200(room temperature, 30min). Negative control was used by secondary antibody only.



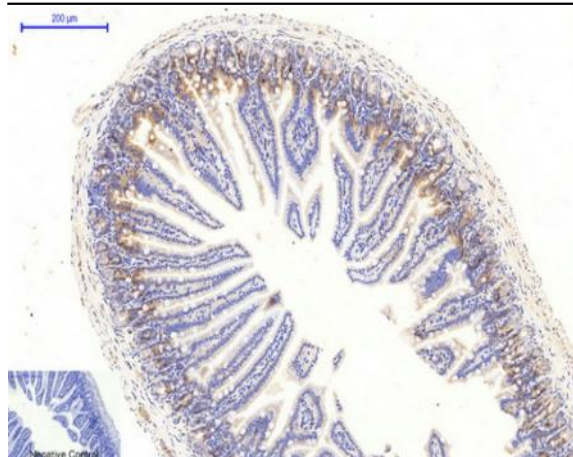
Immunohistochemical analysis of paraffin-embedded Rat-kidney tissue. 1, GSK3 $\alpha/\beta$  (phospho Tyr279/216) Polyclonal Antibody was diluted at 1:200(4 °C, overnight). 2, Sodium citrate pH 6.0 was used for antibody retrieval(>98 °C, 20min). 3, Secondary antibody was diluted at 1:200(room temperature, 30min). Negative control was used by secondary antibody only.



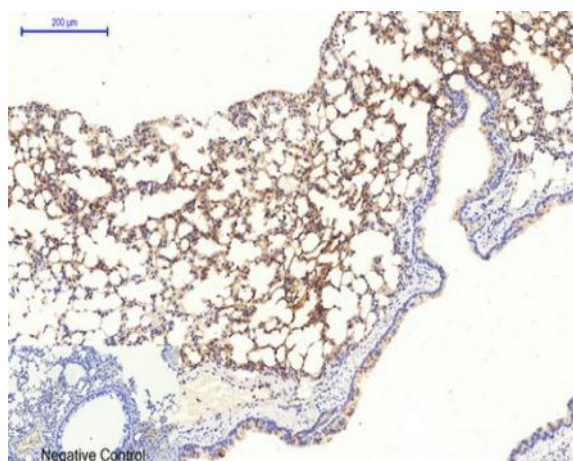
Immunohistochemical analysis of paraffin-embedded Rat-brain tissue. 1, GSK3 $\alpha/\beta$  (phospho Tyr279/216) Polyclonal Antibody was diluted at 1:200(4 °C, overnight). 2, Sodium citrate pH 6.0 was used for antibody retrieval(>98 °C, 20min). 3, Secondary antibody was diluted at 1:200(room temperature, 30min). Negative control was used by secondary antibody only.



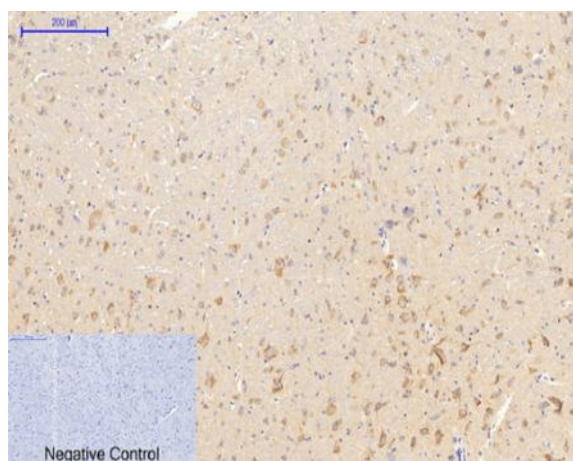
Immunohistochemical analysis of paraffin-embedded Mouse-testis tissue. 1, GSK3 $\alpha/\beta$  (phospho Tyr279/216) Polyclonal Antibody was diluted at 1:200(4 °C, overnight). 2, Sodium citrate pH 6.0 was used for antibody retrieval(>98 °C, 20min). 3, Secondary antibody was diluted at 1:200(room temperature, 30min). Negative control was used by secondary antibody only.



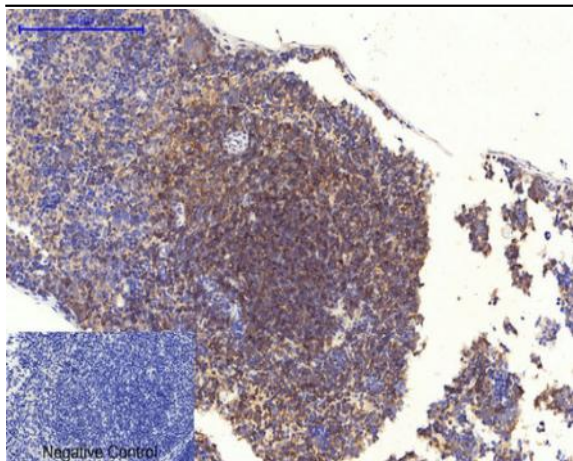
Immunohistochemical analysis of paraffin-embedded Mouse-colon tissue. 1, GSK3 $\alpha/\beta$  (phospho Tyr279/216) Polyclonal Antibody was diluted at 1:200(4°C, overnight). 2, Sodium citrate pH 6.0 was used for antibody retrieval(>98°C, 20min). 3, Secondary antibody was diluted at 1:200(room temperature, 30min). Negative control was used by secondary antibody only.



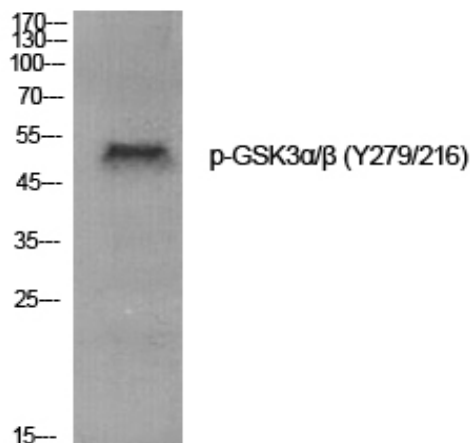
Immunohistochemical analysis of paraffin-embedded Mouse-lung tissue. 1, GSK3 $\alpha/\beta$  (phospho Tyr279/216) Polyclonal Antibody was diluted at 1:200(4°C, overnight). 2, Sodium citrate pH 6.0 was used for antibody retrieval(>98°C, 20min). 3, Secondary antibody was diluted at 1:200(room temperature, 30min). Negative control was used by secondary antibody only.



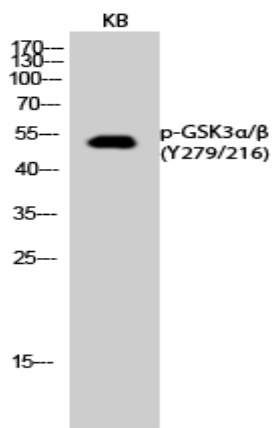
Immunohistochemical analysis of paraffin-embedded Mouse-brain tissue. 1, GSK3 $\alpha/\beta$  (phospho Tyr279/216) Polyclonal Antibody was diluted at 1:200(4°C, overnight). 2, Sodium citrate pH 6.0 was used for antibody retrieval(>98°C, 20min). 3, Secondary antibody was diluted at 1:200(room temperature, 30min). Negative control was used by secondary antibody only.



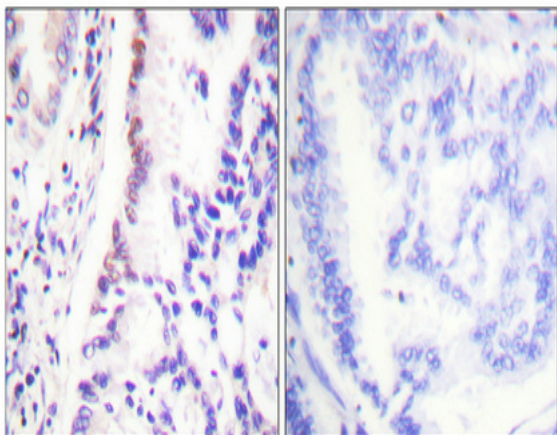
Immunohistochemical analysis of paraffin-embedded Mouse spleen tissue. 1, GSK3α/β (phospho Tyr279/216) Polyclonal Antibody was diluted at 1:200 (4 °C, overnight). 2, Sodium citrate pH 6.0 was used for antibody retrieval (>98 °C, 20min). 3, Secondary antibody was diluted at 1:200 (room temperature, 30min). Negative control was used by secondary antibody only.



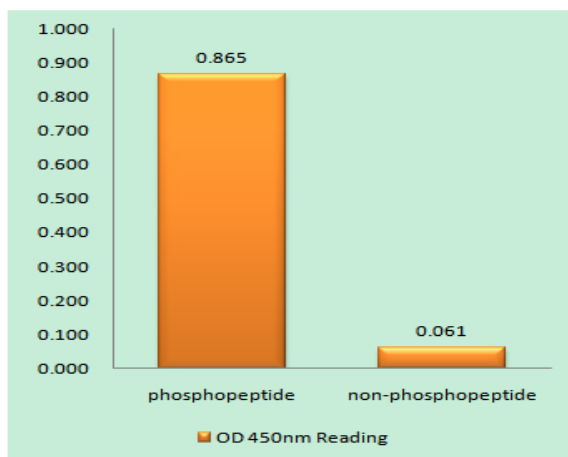
Western Blot analysis of various cells using Phospho-GSK3α/β (Y279/216) Polyclonal Antibody



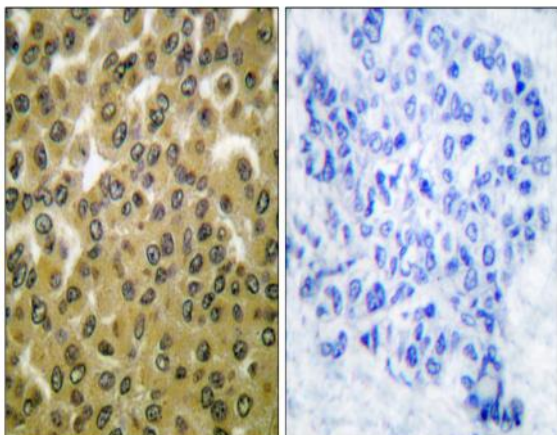
Western Blot analysis of KB cells using Phospho-GSK3α/β (Y279/216) Polyclonal Antibody



Immunohistochemical analysis of paraffin-embedded Human lung cancer. Antibody was diluted at 1:100(4° overnight). High-pressure and temperature Tris-EDTA,pH8.0 was used for antigen retrieval. Negative contrl (right) obtaned from antibody was pre-absorbed by immunogen peptide.



Enzyme-Linked Immunosorbent Assay (Phospho-ELISA) for Immunogen Phosphopeptide (Phospho-left) and Non-Phosphopeptide (Phospho-right), using GSK3 alpha/beta (Phospho-Tyr279/216) Antibody



Immunohistochemistry analysis of paraffin-embedded human breast carcinoma, using GSK3 alpha/beta (Phospho-Tyr279/216) Antibody. The picture on the right is blocked with the phospho peptide.