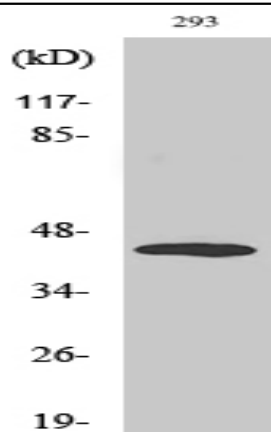


MEK-4 (phospho Thr261) Polyclonal Antibody

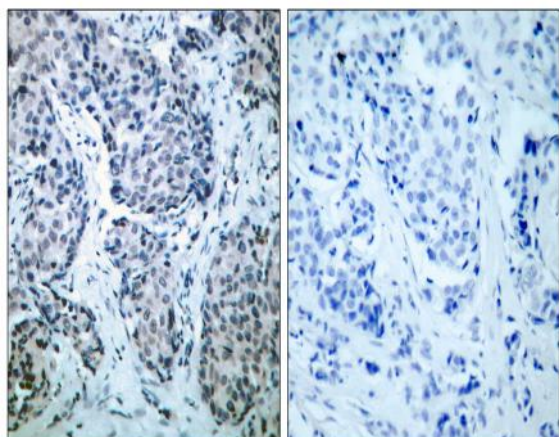
Catalog No :	YP0172
Reactivity :	Human;Mouse;Rat
Applications :	WB;IHC;IF;ELISA
Target :	MEK-4
Fields :	>>MAPK signaling pathway;>>ErbB signaling pathway;>>Toll-like receptor signaling pathway;>>Fc epsilon RI signaling pathway;>>TNF signaling pathway;>>GnRH signaling pathway;>>Relaxin signaling pathway;>>Growth hormone synthesis, secretion and action;>>Alcoholic liver disease;>>Epithelial cell signaling in Helicobacter pylori infection;>>Salmonella infection;>>Yersinia infection;>>Chagas disease;>>Hepatitis B;>>Human T-cell leukemia virus 1 infection;>>Kaposi sarcoma-associated herpesvirus infection;>>Epstein-Barr virus infection;>>Chemical carcinogenesis - reactive oxygen species;>>Lipid and atherosclerosis;>>Fluid shear stress and atherosclerosis
Gene Name :	MAP2K4
Protein Name :	Dual specificity mitogen-activated protein kinase kinase 4
Human Gene Id :	6416
Human Swiss Prot No :	P45985
Mouse Gene Id :	26398
Mouse Swiss Prot No :	P47809
Immunogen :	The antiserum was produced against synthesized peptide derived from human SEK1/MKK4 around the phosphorylation site of Thr261. AA range:227-276
Specificity :	Phospho-MEK-4 (T261) Polyclonal Antibody detects endogenous levels of MEK-4 protein only when phosphorylated at T261.
Formulation :	Liquid in PBS containing 50% glycerol, 0.5% BSA and 0.02% sodium azide.
Source :	Polyclonal, Rabbit,IgG

Dilution :	WB 1:500 - 1:2000. IHC 1:100 - 1:300. ELISA: 1:10000.. IF 1:50-200
Purification :	The antibody was affinity-purified from rabbit antiserum by affinity-chromatography using epitope-specific immunogen.
Concentration :	1 mg/ml
Storage Stability :	-15°C to -25°C/1 year(Do not lower than -25°C)
Observed Band :	48kD
Cell Pathway :	Regulates Angiogenesis; Stem cell pathway; Regulation of Actin Dynamics; Toll_Like; Cell Growth; ErbB/HER; B Cell Receptor; MAPK_ERK_Growth;MAPK_G_Protein
Background :	This gene encodes a member of the mitogen-activated protein kinase (MAPK) family. Members of this family act as an integration point for multiple biochemical signals and are involved in a wide variety of cellular processes such as proliferation, differentiation, transcription regulation, and development. They form a three-tiered signaling module composed of MAPKKKs, MAPKKs, and MAPKs. This protein is phosphorylated at serine and threonine residues by MAPKKKs and subsequently phosphorylates downstream MAPK targets at threonine and tyrosine residues. A similar protein in mouse has been reported to play a role in liver organogenesis. A pseudogene of this gene is located on the long arm of chromosome X. Alternative splicing results in multiple transcript variants. [provided by RefSeq, Jul 2013],
Function :	catalytic activity:ATP + a protein = ADP + a phosphoprotein.,function: Dual specificity kinase that activates the JUN kinases MAPK8 (JNK1) and MAPK9 (JNK2) as well as MAPK14 (p38) but not MAPK1 (ERK2) or MAPK3 (ERK1).,PTM: Activated by phosphorylation on Ser/Thr by MAP kinase kinase kinases.,similarity: Belongs to the protein kinase superfamily.,similarity: Belongs to the protein kinase superfamily. STE Ser/Thr protein kinase family. MAP kinase kinase subfamily.,similarity: Contains 1 protein kinase domain.,subunit: Interacts with SPAG9.,tissue specificity: Abundant expression is seen in the skeletal muscle. It is also widely expressed in other tissues.,
Subcellular Location :	Cytoplasm . Nucleus .
Expression :	Abundant expression is seen in the skeletal muscle. It is also widely expressed in other tissues.

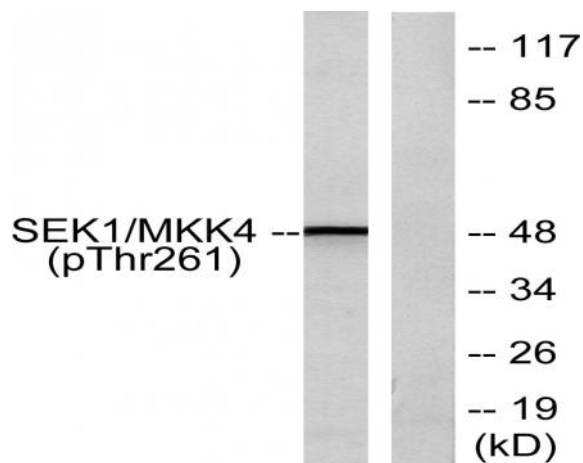
Products Images



Western Blot analysis of various cells using Phospho-MEK-4 (T261) Polyclonal Antibody



Immunohistochemistry analysis of paraffin-embedded human breast carcinoma, using SEK1/MKK4 (Phospho-Thr261) Antibody. The picture on the right is blocked with the phospho peptide.



Western blot analysis of lysates from 293 cells treated with UV 15', using SEK1/MKK4 (Phospho-Thr261) Antibody. The lane on the right is blocked with the phospho peptide.