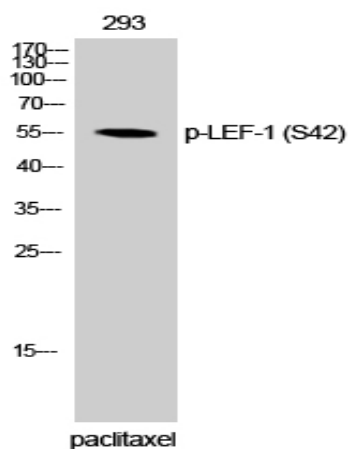


LEF-1 (phospho Ser42) Polyclonal Antibody

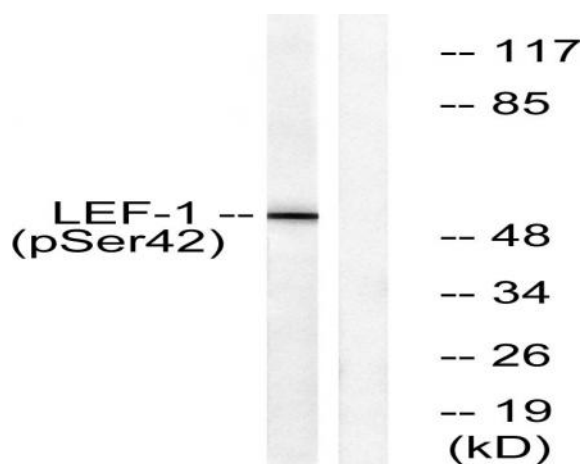
Catalog No :	YP0374
Reactivity :	Human;Mouse;Rat
Applications :	WB;IHC
Target :	LEF-1
Fields :	>>Wnt signaling pathway;>>Hippo signaling pathway;>>Adherens junction;>>Melanogenesis;>>Cushing syndrome;>>Alcoholic liver disease;>>Salmonella infection;>>Kaposi sarcoma-associated herpesvirus infection;>>Pathways in cancer;>>Colorectal cancer;>>Endometrial cancer;>>Prostate cancer;>>Thyroid cancer;>>Basal cell carcinoma;>>Acute myeloid leukemia;>>Breast cancer;>>Hepatocellular carcinoma;>>Gastric cancer;>>Arrhythmogenic right ventricular cardiomyopathy
Gene Name :	LEF1
Protein Name :	Lymphoid enhancer-binding factor 1
Human Gene Id :	51176
Human Swiss Prot No :	Q9UJU2
Mouse Gene Id :	16842
Mouse Swiss Prot No :	P27782
Rat Gene Id :	161452
Rat Swiss Prot No :	Q9QXN1
Immunogen :	The antiserum was produced against synthesized peptide derived from human LEF-1 around the phosphorylation site of Ser42. AA range:8-57
Specificity :	Phospho-LEF-1 (S42) Polyclonal Antibody detects endogenous levels of LEF-1 protein only when phosphorylated at S42. Liquid in PBS containing 50% glycerol, 0.5% BSA and 0.02% sodium azide.

Formulation :	Polyclonal, Rabbit,IgG
Dilution :	WB 1:500-2000;IHC 1:50-300
Purification :	The antibody was affinity-purified from rabbit antiserum by affinity-chromatography using epitope-specific immunogen.
Concentration :	1 mg/ml
Storage Stability :	-15°C to -25°C/1 year(Do not lower than -25°C)
Observed Band :	55kD
Cell Pathway :	WNT;WNT-T CELLAdherens_Junction;Melanogenesis;Pathways in cancer;Colorectal cancer;Endometrial cancer;Prostate cancer;Thyroid cancer;Basal cell carcinoma;Acute myeloid leukemia;Arrhythmogenic right ve
Background :	This gene encodes a transcription factor belonging to a family of proteins that share homology with the high mobility group protein-1. The protein encoded by this gene can bind to a functionally important site in the T-cell receptor-alpha enhancer, thereby conferring maximal enhancer activity. This transcription factor is involved in the Wnt signaling pathway, and it may function in hair cell differentiation and follicle morphogenesis. Mutations in this gene have been found in somatic sebaceous tumors. This gene has also been linked to other cancers, including androgen-independent prostate cancer. Alternative splicing results in multiple transcript variants. [provided by RefSeq, Oct 2009],
Function :	alternative products:Additional isoforms seem to exist,domain:Proline-rich and acidic regions are implicated in the activation functions of RNA polymerase II transcription factors.,function:Participates in the Wnt signaling pathway. Activates transcription of target genes in the presence of CTNNB1 and EP300. May play a role in hair cell differentiation and follicle morphogenesis. TLE1, TLE2, TLE3 and TLE4 repress transactivation mediated by LEF1 and CTNNB1. Regulates T-cell receptor alpha enhancer function. Binds DNA in a sequence-specific manner. PIAG antagonizes both Wnt-dependent and Wnt-independent activation by LEF1 (By similarity). Isoform 3 lacks the CTNNB1 interaction domain and may be an antagonist for Wnt signaling.,similarity:Belongs to the TCF/LEF family.,similarity:Contains 1 HMG box DNA-binding domain.,subcellular location:Found in nuclear bodies upon PIASG binding.,subunit
Subcellular Location :	Nucleus . Found in nuclear bodies upon PIASG binding. .
Expression :	Detected in thymus. Not detected in normal colon, but highly expressed in colon cancer biopsies and colon cancer cell lines. Expressed in several pancreatic tumors and weakly expressed in normal pancreatic tissue. Isoforms 1 and 5 are detected in several pancreatic cell lines.

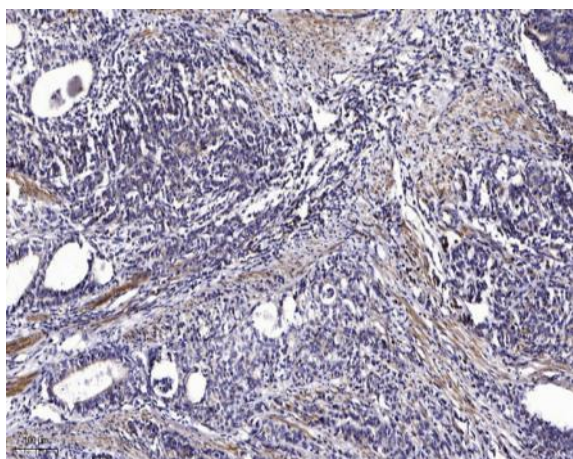
Products Images



Western Blot analysis of 293 cells using Phospho-LEF-1 (S42) Polyclonal Antibody



Western blot analysis of lysates from 293 cells treated with paclitaxel 1 uM 24h, using LEF-1 (Phospho-Ser42) Antibody. The lane on the right is blocked with the phospho peptide.



Immunohistochemical analysis of paraffin-embedded human Gastric adenocarcinoma. 1, Antibody was diluted at 1:200(4° overnight). 2, Tris-EDTA,pH9.0 was used for antigen retrieval. 3,Secondary antibody was diluted at 1:200(room temperature, 45min).