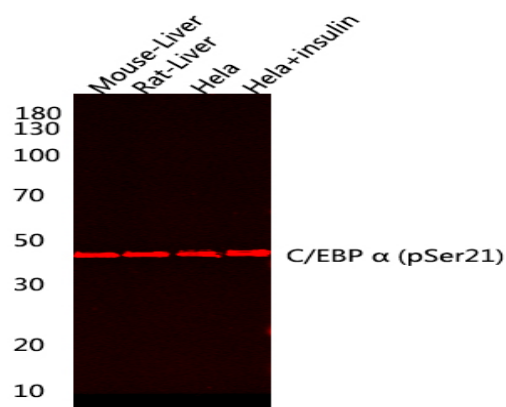


## C/EBP $\alpha$ (phospho Ser21) Polyclonal Antibody

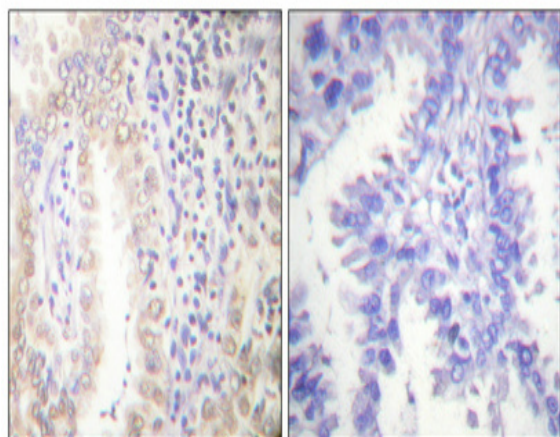
<b>Catalog No :</b>	YP0597
<b>Reactivity :</b>	Human;Mouse;Rat
<b>Applications :</b>	WB;IHC;IF;ELISA
<b>Target :</b>	C/EBP $\alpha$
<b>Fields :</b>	>>Non-alcoholic fatty liver disease;>>Pathways in cancer;>>Transcriptional misregulation in cancer;>>Acute myeloid leukemia
<b>Gene Name :</b>	CEBPA
<b>Protein Name :</b>	CCAAT/enhancer-binding protein alpha
<b>Human Gene Id :</b>	1050
<b>Human Swiss Prot No :</b>	P49715
<b>Mouse Gene Id :</b>	12606
<b>Mouse Swiss Prot No :</b>	P53566
<b>Rat Gene Id :</b>	24252
<b>Rat Swiss Prot No :</b>	P05554
<b>Immunogen :</b>	The antiserum was produced against synthesized peptide derived from human C/EBP-alpha around the phosphorylation site of Ser21. AA range:6-55
<b>Specificity :</b>	Phospho-C/EBP $\alpha$ (S21) Polyclonal Antibody detects endogenous levels of C/EBP $\alpha$ protein only when phosphorylated at S21.
<b>Formulation :</b>	Liquid in PBS containing 50% glycerol, 0.5% BSA and 0.02% sodium azide.
<b>Source :</b>	Polyclonal, Rabbit,IgG
<b>Dilution :</b>	WB 1:500 - 1:2000. IHC 1:100 - 1:300. ELISA: 1:5000.. IF 1:50-200

<b>Purification :</b>	The antibody was affinity-purified from rabbit antiserum by affinity-chromatography using epitope-specific immunogen.
<b>Concentration :</b>	1 mg/ml
<b>Storage Stability :</b>	-15°C to -25°C/1 year(Do not lower than -25°C)
<b>Observed Band :</b>	42kd
<b>Cell Pathway :</b>	Pathways in cancer;Acute myeloid leukemia;
<b>Background :</b>	This intronless gene encodes a transcription factor that contains a basic leucine zipper (bZIP) domain and recognizes the CCAAT motif in the promoters of target genes. The encoded protein functions in homodimers and also heterodimers with CCAAT/enhancer-binding proteins beta and gamma. Activity of this protein can modulate the expression of genes involved in cell cycle regulation as well as in body weight homeostasis. Mutation of this gene is associated with acute myeloid leukemia. The use of alternative in-frame non-AUG (GUG) and AUG start codons results in protein isoforms with different lengths. Differential translation initiation is mediated by an out-of-frame, upstream open reading frame which is located between the GUG and the first AUG start codons. [provided by RefSeq, Dec 2013],
<b>Function :</b>	function:C/EBP is a DNA-binding protein that recognizes two different motifs: the CCAAT homology common to many promoters and the enhanced core homology common to many enhancers.,similarity:Belongs to the bZIP family.,similarity:Belongs to the bZIP family. C/EBP subfamily.,similarity:Contains 1 bZIP domain.,subunit:Binds DNA as a dimer and can form stable heterodimers with C/EBP beta and gamma. Interacts with UBN1. Interacts with HBV protein X.,
<b>Subcellular Location :</b>	Nucleus .; [Isoform 4]: Nucleus, nucleolus .
<b>Expression :</b>	Liver,Pancreas,Umbilical cord,White Matter pool- 5 brain tissues- f

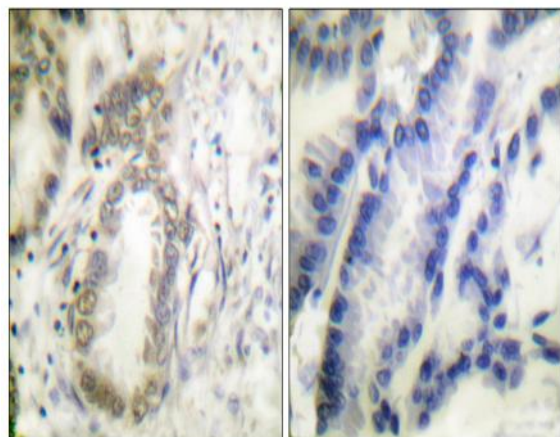
## Products Images



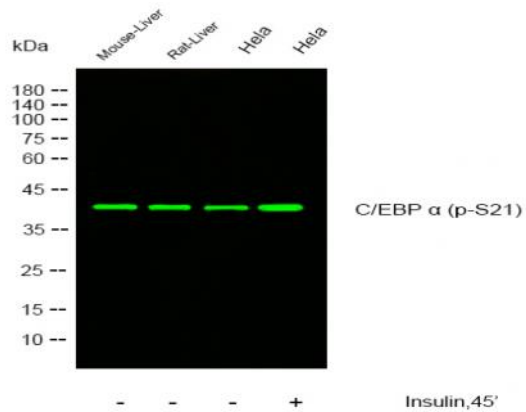
Western blot analysis of lysates from Mouse-liver, Rat-liver, Hela cells treated with 0.01U/ml 30min, using C/EBP α (phospho Ser21) Polyclonal Antibody. Primary Antibody was diluted at 1:1000 4° over night, secondary antibody (Immunoway cat:RS23710) was diluted at 1:10000, 37° 1 hour.



Immunohistochemical analysis of paraffin-embedded Human lung cancer. Antibody was diluted at 1:100 (4° overnight). High-pressure and temperature Tris-EDTA, pH 8.0 was used for antigen retrieval. Negative control (right) obtained from antibody was pre-absorbed by immunogen peptide.



Immunohistochemistry analysis of paraffin-embedded human lung carcinoma, using C/EBP-alpha (Phospho-Ser21) Antibody. The picture on the right is blocked with the phospho peptide.



Western Blot analysis of mouse liver, rat liver, hela cells, hela cell treated or untreated by insulin. Primary Antibody was diluted at 1:1000. Secondary antibody(catalog#:RS23920) was diluted at 1:10000