

Ret (phospho Tyr1062) Polyclonal Antibody

Catalog No :	YP0519
Reactivity :	Human;Mouse;Rat
Applications :	WB;IHC;IF;ELISA
Target :	Ret
Fields :	>>Calcium signaling pathway;>>Pathways in cancer;>>Thyroid cancer;>>Non-small cell lung cancer;>>Central carbon metabolism in cancer
Gene Name :	RET
Protein Name :	Proto-oncogene tyrosine-protein kinase receptor Ret
Human Gene Id :	5979
Human Swiss Prot No :	P07949
Mouse Gene Id :	19713
Mouse Swiss Prot No :	P35546
Immunogen :	The antiserum was produced against synthesized peptide derived from human Ret around the phosphorylation site of Tyr1062. AA range:1041-1090
Specificity :	Phospho-Ret (Y1062) Polyclonal Antibody detects endogenous levels of Ret protein only when phosphorylated at Y1062.
Formulation :	Liquid in PBS containing 50% glycerol, 0.5% BSA and 0.02% sodium azide.
Source :	Polyclonal, Rabbit,IgG
Dilution :	WB 1:500 - 1:2000. IHC 1:100 - 1:300. ELISA: 1:10000.. IF 1:50-200
Purification :	The antibody was affinity-purified from rabbit antiserum by affinity-chromatography using epitope-specific immunogen.

Concentration : 1 mg/ml

Storage Stability : -15°C to -25°C/1 year(Do not lower than -25°C)

Observed Band : 170kD

Cell Pathway : Endocytosis;Pathways in cancer;Thyroid cancer;

Background : ret proto-oncogene(RET) Homo sapiens This gene, a member of the cadherin superfamily, encodes one of the receptor tyrosine kinases, which are cell-surface molecules that transduce signals for cell growth and differentiation. This gene plays a crucial role in neural crest development, and it can undergo oncogenic activation in vivo and in vitro by cytogenetic rearrangement. Mutations in this gene are associated with the disorders multiple endocrine neoplasia, type IIA, multiple endocrine neoplasia, type IIB, Hirschsprung disease, and medullary thyroid carcinoma. Two transcript variants encoding different isoforms have been found for this gene. Additional transcript variants have been described but their biological validity has not been confirmed. [provided by RefSeq, Jul 2008],

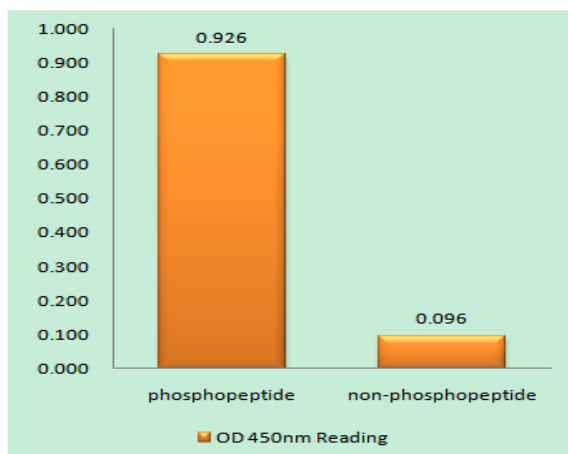
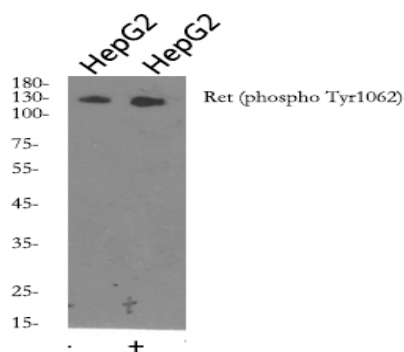
Function : catalytic activity:ATP + a [protein]-L-tyrosine = ADP + a [protein]-L-tyrosine phosphate.,disease:Chromosomal aberrations involving RET are a cause of thyroid papillary carcinoma (PACT) [MIM:188550]. Inversion inv(10)(q11.2;q21) generates the RET/CCDC6 (PTC1) oncogene; inversion inv(10)(q11.2;q11.2) generates the RET/NCOA4 (PTC3) oncogene; translocation t(10;14)(q11;q32) with GOLGA5 generates the RET/GOLGA5 (PTC5) oncogene; translocation t(8;10)(p21.3;q11.2) with PCM1 generates the PCM1/RET fusion; translocation t(6;10)(p21.3;q11.2) with RFP generates the Delta RFP/RET oncogene; translocation t(1;10)(p13;q11) with TRIM33 generates the TRIM33/RET (PTC7) oncogene; translocation t(7;10)(q32;q11) with TIF1 generates the TIF1/RET (PTC6) oncogene. The PTC5 oncogene has been found in 2 cases of PACT in children exposed to radioactive fallout after Chernobyl.,disease:Defects in RET are a cause o

Subcellular Location : Cell membrane ; Single-pass type I membrane protein . Endosome membrane ; Single-pass type I membrane protein . Predominantly located on the plasma membrane. In the presence of SORL1 and GFRA1, directed to endosomes. .

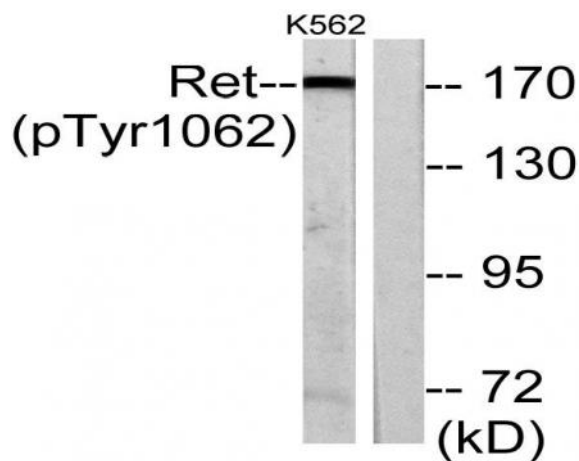
Expression : Blood,Brain,Fibroblast,Leukocyte,Neural crest,Peripheral blood leukocyte,Thyroid papillary

Products Images

Western blot analysis of Ret (phospho Tyr1062) Polyclonal Antibody, using HepG2 cell treated or untreated with forskolin 40nM 30', 4° over night, secondary antibody(cat: RS0002 was diluted at 1:10000, 37° 1hour.



Enzyme-Linked Immunosorbent Assay (Phospho-ELISA) for Immunogen Phosphopeptide (Phospho-left) and Non-Phosphopeptide (Phospho-right), using Ret (Phospho-Tyr1062) Antibody



Western blot analysis of lysates from K562 cells, using Ret (Phospho-Tyr1062) Antibody. The lane on the right is blocked with the phospho peptide.