

Chk2 (phospho Thr383) Polyclonal Antibody

Catalog No :	YP0538
Reactivity :	Human;Mouse;Rat;Monkey
Applications :	WB;IF;ELISA
Target :	Chk2
Fields :	>>Cell cycle;>>p53 signaling pathway;>>Cellular senescence;>>Human T-cell leukemia virus 1 infection
Gene Name :	CHEK2
Protein Name :	Serine/threonine-protein kinase Chk2
Human Gene Id :	11200
Human Swiss Prot No :	O96017
Mouse Gene Id :	50883
Mouse Swiss Prot No :	Q9Z265
Immunogen :	The antiserum was produced against synthesized peptide derived from human Chk2 around the phosphorylation site of Thr383. AA range:356-405
Specificity :	Phospho-Chk2 (T383) Polyclonal Antibody detects endogenous levels of Chk2 protein only when phosphorylated at T383.
Formulation :	Liquid in PBS containing 50% glycerol, 0.5% BSA and 0.02% sodium azide.
Source :	Polyclonal, Rabbit,IgG
Dilution :	WB 1:500 - 1:2000. IF 1:200 - 1:1000. ELISA: 1:20000. Not yet tested in other applications.
Purification :	The antibody was affinity-purified from rabbit antiserum by affinity-chromatography using epitope-specific immunogen.

Concentration : 1 mg/ml

Storage Stability : -15°C to -25°C/1 year(Do not lower than -25°C)

Observed Band : 60kD

Cell Pathway : Cell_Cycle_G1S;Cell_Cycle_G2M_DNA;p53;

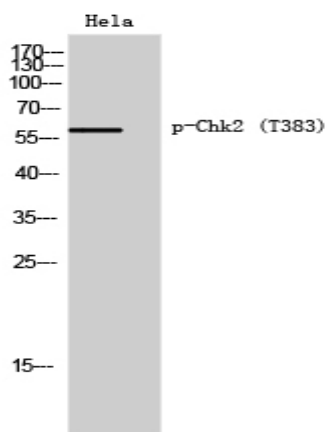
Background : In response to DNA damage and replication blocks, cell cycle progression is halted through the control of critical cell cycle regulators. The protein encoded by this gene is a cell cycle checkpoint regulator and putative tumor suppressor. It contains a forkhead-associated protein interaction domain essential for activation in response to DNA damage and is rapidly phosphorylated in response to replication blocks and DNA damage. When activated, the encoded protein is known to inhibit CDC25C phosphatase, preventing entry into mitosis, and has been shown to stabilize the tumor suppressor protein p53, leading to cell cycle arrest in G1. In addition, this protein interacts with and phosphorylates BRCA1, allowing BRCA1 to restore survival after DNA damage. Mutations in this gene have been linked with Li-Fraumeni syndrome, a highly penetrant familial cancer phenotype usually associated with inherited mutati

Function : catalytic activity:ATP + a protein = ADP + a phosphoprotein.,cofactor:Magnesium.,disease:Defects in CHEK2 are associated with Li-Fraumeni syndrome 2 (LFS2) [MIM:609265]; a highly penetrant familial cancer phenotype usually associated with inherited mutations in p53/TP53.,disease:Defects in CHEK2 are found in some patients with osteosarcoma (OSRC) [MIM:259500].,disease:Defects in CHEK2 are found in some patients with prostate cancer (CaP) [MIM:176807].,enzyme regulation:Rapidly phosphorylated on Thr-68 by MLTK in response to DNA damage and to replication block. Kinase activity is also up-regulated by autophosphorylation.,function:Regulates cell cycle checkpoints and apoptosis in response to DNA damage, particularly to DNA double-strand breaks. Inhibits CDC25C phosphatase by phosphorylation on 'Ser-216', preventing the entry into mitosis. May also play a role in meiosis. Regulates the TP53

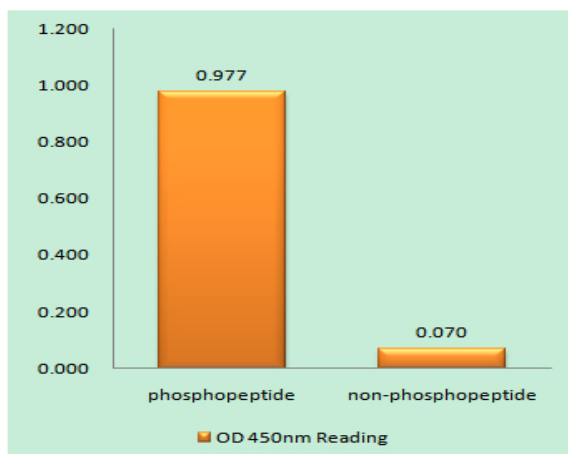
Subcellular Location : [Isoform 2]: Nucleus. Isoform 10 is present throughout the cell.; [Isoform 4]: Nucleus.; [Isoform 7]: Nucleus.; [Isoform 9]: Nucleus.; [Isoform 12]: Nucleus.; Nucleus, PML body. Nucleus, nucleoplasm. Recruited into PML bodies together with TP53.

Expression : High expression is found in testis, spleen, colon and peripheral blood leukocytes. Low expression is found in other tissues.

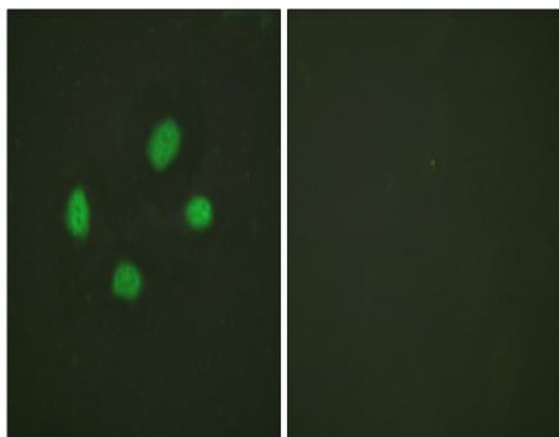
Products Images



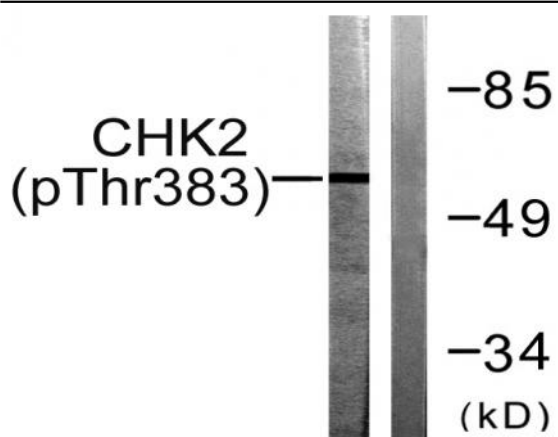
Western Blot analysis of HeLa cells using Phospho-Chk2 (T383) Polyclonal Antibody diluted at 1:1000 cells nucleus extracted by Minute TM Cytoplasmic and Nuclear Fractionation kit (SC-003, Inventibiotec, MN, USA).



Enzyme-Linked Immunosorbent Assay (Phospho-ELISA) for Immunogen Phosphopeptide (Phospho-left) and Non-Phosphopeptide (Phospho-right), using Chk2 (Phospho-Thr383) Antibody



Immunofluorescence analysis of HeLa cells, using Chk2 (Phospho-Thr383) Antibody. The picture on the right is blocked with the phospho peptide.



Western blot analysis of lysates from COS7 cells treated with UV 30', using Chk2 (Phospho-Thr383) Antibody. The lane on the right is blocked with the phospho peptide.