

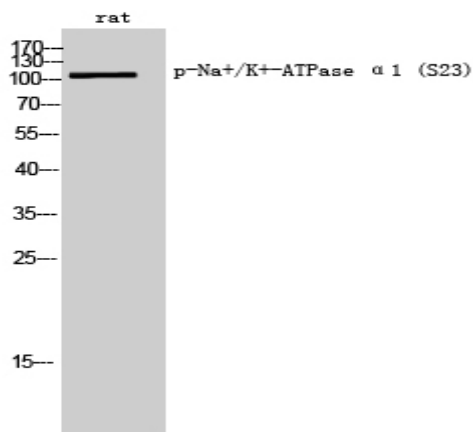
**Na<sup>+</sup>/K<sup>+</sup>-ATPase α1 (phospho Ser23) Polyclonal Antibody**

<b>Catalog No :</b>	YP0563
<b>Reactivity :</b>	Rat
<b>Applications :</b>	WB;IF;ELISA
<b>Target :</b>	Na <sup>+</sup> /K <sup>+</sup> -ATPase α1
<b>Gene Name :</b>	ATP1A1
<b>Protein Name :</b>	Sodium/potassium-transporting ATPase subunit alpha-1
<b>Human Swiss Prot No :</b>	P05023
<b>Rat Gene Id :</b>	24211
<b>Rat Swiss Prot No :</b>	P06685
<b>Immunogen :</b>	The antiserum was produced against synthesized peptide derived from rat ATP1 alpha1/Na <sup>+</sup> K <sup>+</sup> ATPase1 around the phosphorylation site of Ser23. AA range:15-64
<b>Specificity :</b>	Phospho-Na <sup>+</sup> /K <sup>+</sup> -ATPase α1 (S23) Polyclonal Antibody detects endogenous levels of Na <sup>+</sup> /K <sup>+</sup> -ATPase α1 protein only when phosphorylated at S23.
<b>Formulation :</b>	Liquid in PBS containing 50% glycerol, 0.5% BSA and 0.02% sodium azide.
<b>Source :</b>	Polyclonal, Rabbit,IgG
<b>Dilution :</b>	WB 1:500 - 1:2000. IF 1:100 - 1:300. ELISA: 1:5000. Not yet tested in other applications.
<b>Purification :</b>	The antibody was affinity-purified from rabbit antiserum by affinity-chromatography using epitope-specific immunogen.
<b>Concentration :</b>	1 mg/ml
<b>Storage Stability :</b>	-15°C to -25°C/1 year(Do not lower than -25°C)

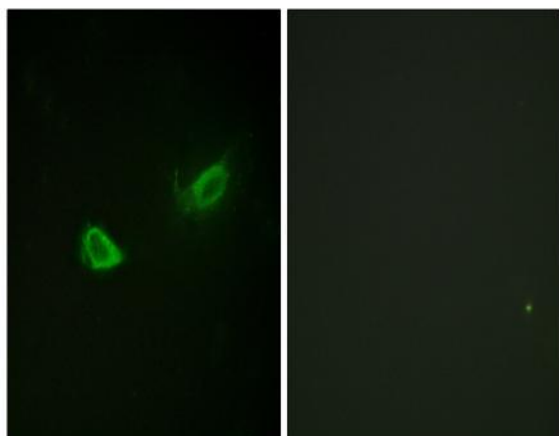
**Observed Band :** 113kD**Background :**

The ATPase Na<sup>+</sup>/K<sup>+</sup> transporting subunit alpha 1 encoded by ATP1A1 belongs to the family of P-type cation transport ATPases, and to the subfamily of Na<sup>+</sup>/K<sup>+</sup>-ATPases. Na<sup>+</sup>/K<sup>+</sup>-ATPase is an integral membrane protein responsible for establishing and maintaining the electrochemical gradients of Na and K ions across the plasma membrane. These gradients are essential for osmoregulation, for sodium-coupled transport of a variety of organic and inorganic molecules, and for electrical excitability of nerve and muscle. This enzyme is composed of two subunits, a large catalytic subunit (alpha) and a smaller glycoprotein subunit (beta). The catalytic subunit of Na<sup>+</sup>/K<sup>+</sup>-ATPase is encoded by multiple genes. This gene encodes an alpha 1 subunit. Multiple transcript variants encoding different isoforms have been found for this gene.

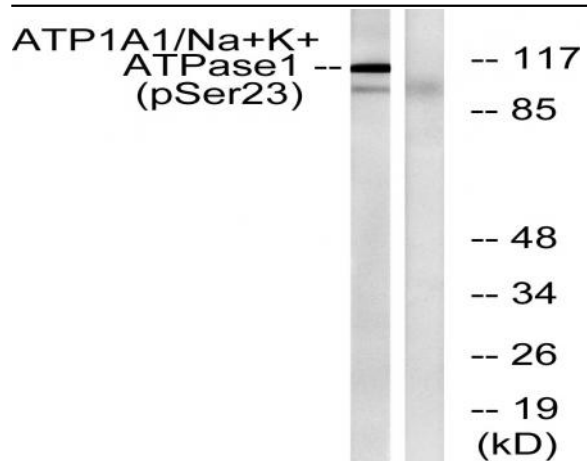
## Products Images



Western Blot analysis of rat cells using Phospho-Na<sup>+</sup>/K<sup>+</sup>-ATPase alpha 1 (S23) Polyclonal Antibody



Immunofluorescence analysis of NIH/3T3 cells, using ATP1 alpha1/Na<sup>+</sup>K<sup>+</sup> ATPase1 (Phospho-Ser23) Antibody. The picture on the right is blocked with the phospho peptide.



Western blot analysis of lysates from rat brain, using ATP1 alpha1/Na+K+ ATPase1 (Phospho-Ser23) Antibody. The lane on the right is blocked with the phospho peptide.