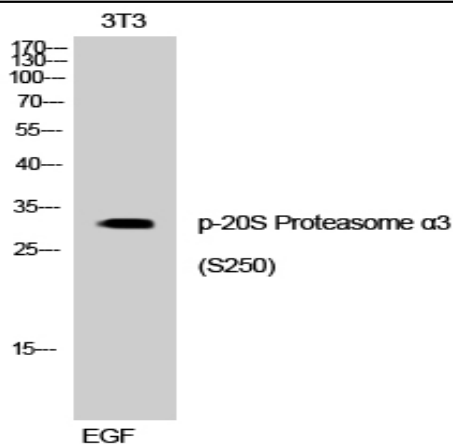


20S Proteasome α 3 (phospho Ser250) Polyclonal Antibody

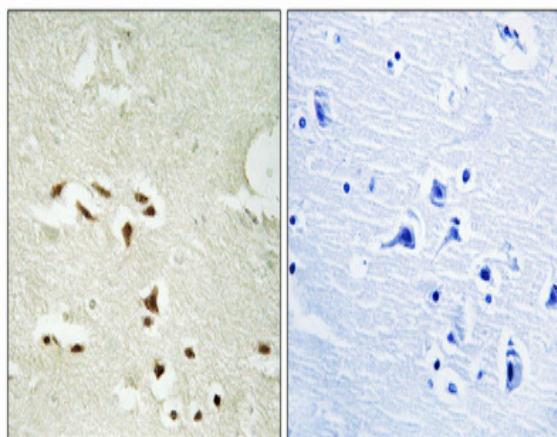
Catalog No :	YP0396
Reactivity :	Human;Mouse;Rat
Applications :	WB;IHC;IF;ELISA
Target :	Proteasome α 3
Fields :	>>Proteasome;>>Alzheimer disease;>>Parkinson disease;>>Amyotrophic lateral sclerosis;>>Huntington disease;>>Spinocerebellar ataxia;>>Prion disease;>>Pathways of neurodegeneration - multiple diseases
Gene Name :	PSMA3
Protein Name :	Proteasome subunit alpha type-3
Human Gene Id :	5684
Human Swiss Prot No :	P25788
Mouse Gene Id :	19167
Mouse Swiss Prot No :	O70435
Rat Gene Id :	29670
Rat Swiss Prot No :	P18422
Immunogen :	The antiserum was produced against synthesized peptide derived from human Proteasome alpha3 around the phosphorylation site of Ser250. AA range:206-255
Specificity :	Phospho-20S Proteasome α 3 (S250) Polyclonal Antibody detects endogenous levels of 20S Proteasome α 3 protein only when phosphorylated at S250.
Formulation :	Liquid in PBS containing 50% glycerol, 0.5% BSA and 0.02% sodium azide.
Source :	Polyclonal, Rabbit,IgG

Dilution :	<u>WB 1:500 - 1:2000. IHC 1:100 - 1:300. ELISA: 1:10000.. IF 1:50-200</u>
Purification :	<u>The antibody was affinity-purified from rabbit antiserum by affinity-chromatography using epitope-specific immunogen.</u>
Concentration :	<u>1 mg/ml</u>
Storage Stability :	<u>-15°C to -25°C/1 year(Do not lower than -25°C)</u>
Observed Band :	<u>32kD</u>
Cell Pathway :	<u>Proteasome;</u>
Background :	<u>The proteasome is a multicatalytic proteinase complex with a highly ordered ring-shaped 20S core structure. The core structure is composed of 4 rings of 28 non-identical subunits; 2 rings are composed of 7 alpha subunits and 2 rings are composed of 7 beta subunits. Proteasomes are distributed throughout eukaryotic cells at a high concentration and cleave peptides in an ATP/ubiquitin-dependent process in a non-lysosomal pathway. An essential function of a modified proteasome, the immunoproteasome, is the processing of class I MHC peptides. This gene encodes a member of the peptidase T1A family, that is a 20S core alpha subunit. Two alternative transcripts encoding different isoforms have been identified. [provided by RefSeq, Jul 2008],</u>
Function :	<u>catalytic activity: Cleavage of peptide bonds with very broad specificity., function: The proteasome is a multicatalytic proteinase complex which is characterized by its ability to cleave peptides with Arg, Phe, Tyr, Leu, and Glu adjacent to the leaving group at neutral or slightly basic pH. The proteasome has an ATP-dependent proteolytic activity., similarity: Belongs to the peptidase T1A family., subunit: The 26S proteasome consists of a 20S proteasome core and two 19S regulatory subunits. The 20S proteasome core is composed of 28 subunits that are arranged in four stacked rings, resulting in a barrel-shaped structure. The two end rings are each formed by seven alpha subunits, and the two central rings are each formed by seven beta subunits., subunit: The 26S proteasome consists of a 20S proteasome core and two 19S regulatory subunits. The 20S proteasome core is composed of 28 subunits that are</u>
Subcellular Location :	<u>Cytoplasm . Nucleus . Translocated from the cytoplasm into the nucleus following interaction with AKIRIN2, which bridges the proteasome with the nuclear import receptor IPO9. .</u>
Expression :	<u>Bone marrow, Epithelium, Liver, Pancreas, Urinary bladder,</u>

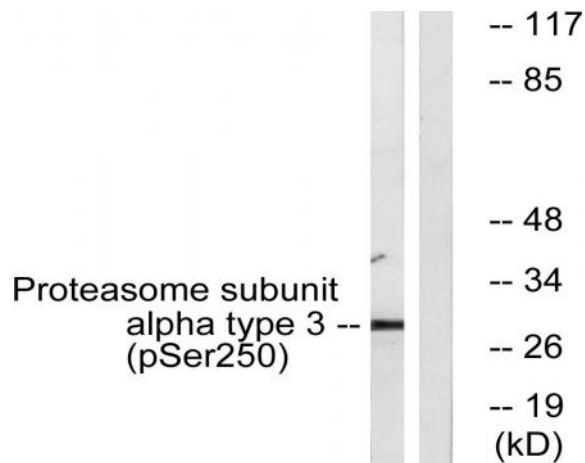
Products Images



Western Blot analysis of 3T3 cells using Phospho-20S Proteasome α 3 (S250) Polyclonal Antibody



Immunohistochemical analysis of paraffin-embedded Human brain. Antibody was diluted at 1:100 (4° overnight). High-pressure and temperature Tris-EDTA, pH 8.0 was used for antigen retrieval. Negative control (right) obtained from antibody was pre-absorbed by immunogen peptide.



Western blot analysis of lysates from NIH/3T3 cells treated with EGF 200ng/ml 30', using Proteasome alpha3 (Phospho-Ser250) Antibody. The lane on the right is blocked with the phospho peptide.