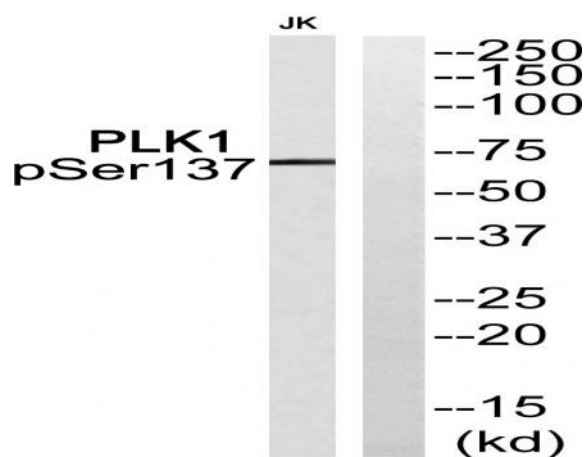


Plk1 (phospho Ser137) Polyclonal Antibody

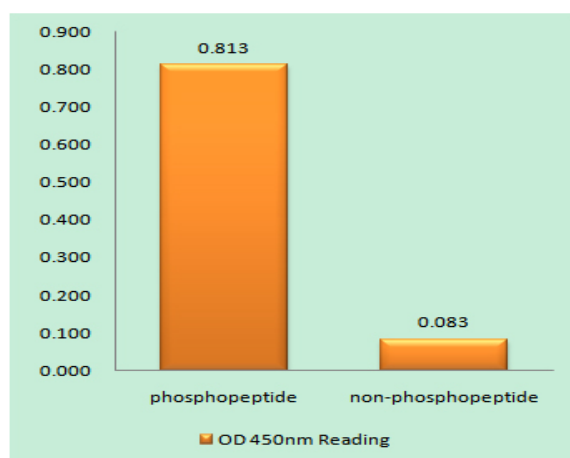
Catalog No :	YP0434
Reactivity :	Human;Mouse;Rat
Applications :	WB;IF;ELISA;IHC
Target :	PLK1
Fields :	>>FoxO signaling pathway;>>Cell cycle;>>Oocyte meiosis;>>Progesterone-mediated oocyte maturation
Gene Name :	PLK1
Protein Name :	Serine/threonine-protein kinase PLK1
Human Gene Id :	5347
Human Swiss Prot No :	P53350
Mouse Gene Id :	18817
Mouse Swiss Prot No :	Q07832
Rat Gene Id :	25515
Rat Swiss Prot No :	Q62673
Immunogen :	The antiserum was produced against synthesized peptide derived from human PLK1 around the phosphorylation site of Ser137. AA range:103-152
Specificity :	Phospho-Plk1 (S137) Polyclonal Antibody detects endogenous levels of Plk1 protein only when phosphorylated at S137.
Formulation :	Liquid in PBS containing 50% glycerol, 0.5% BSA and 0.02% sodium azide.
Source :	Polyclonal, Rabbit,IgG
Dilution :	WB 1:500-2000; IF ICC 1:50-200;ELISA 1:2000-20000;IHC 1:50-200

Purification :	The antibody was affinity-purified from rabbit antiserum by affinity-chromatography using epitope-specific immunogen.
Concentration :	1 mg/ml
Storage Stability :	-15°C to -25°C/1 year(Do not lower than -25°C)
Observed Band :	68kD
Cell Pathway :	Cell_Cycle_G1S;Cell_Cycle_G2M_DNA;Oocyte meiosis;Progesterone-mediated oocyte maturation;
Background :	The Ser/Thr protein kinase encoded by this gene belongs to the CDC5/Polo subfamily. It is highly expressed during mitosis and elevated levels are found in many different types of cancer. Depletion of this protein in cancer cells dramatically inhibited cell proliferation and induced apoptosis; hence, it is a target for cancer therapy. [provided by RefSeq, Sep 2015],
Function :	catalytic activity:ATP + a protein = ADP + a phosphoprotein.,developmental stage:Accumulates to a maximum during the G2 and M phases, declines to a nearly undetectable level following mitosis and throughout G1 phase, and then begins to accumulate again during S phase.,enzyme regulation:Activated by serine and threonine phosphorylation.,function:Serine/threonine-protein kinase that performs several important functions throughout M phase of the cell cycle, including the regulation of centrosome maturation and spindle assembly, the removal of cohesins from chromosome arms, the inactivation of APC/C inhibitors, and the regulation of mitotic exit and cytokinesis.,induction:By growth-stimulating agents.,PTM:Autophosphorylation and phosphorylation of Ser-137 are not significant events during activation of PLK1 in M phase.,PTM:Catalytic activity is enhanced by phosphorylation of Thr-210 and/or S
Subcellular Location :	Nucleus. Chromosome, centromere, kinetochore. Cytoplasm, cytoskeleton, microtubule organizing center, centrosome . Cytoplasm, cytoskeleton, spindle . Midbody . localization at the centrosome starts at the G1/S transition (PubMed:24018379). During early stages of mitosis, the phosphorylated form is detected on centrosomes and kinetochores. Localizes to the outer kinetochore. Presence of SGO1 and interaction with the phosphorylated form of BUB1 is required for the kinetochore localization. Localizes onto the central spindle by phosphorylating and docking at midzone proteins KIF20A/MKLP2 and PRC1. Colocalizes with FRY to separating centrosomes and spindle poles from prophase to metaphase in mitosis, but not in other stages of the cell cycle. Localization to the centrosome is required for S ph
Expression :	Placenta and colon.

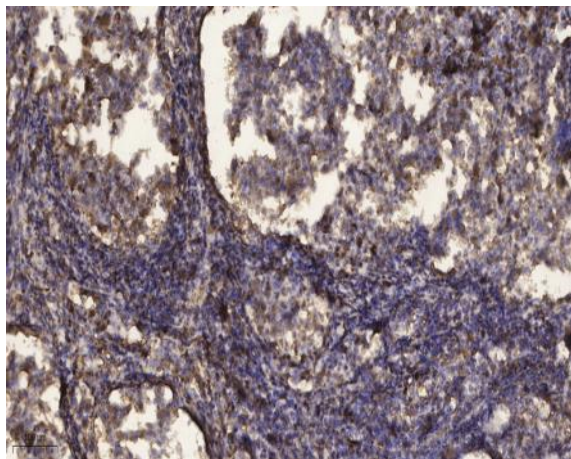
Products Images



Western blot analysis of PLK1 (Phospho-Ser137) Antibody. The lane on the right is blocked with the PLK1 (Phospho-Ser137) peptide.



Enzyme-Linked Immunosorbent Assay (Phospho-ELISA) for Immunogen Phosphopeptide (Phospho-left) and Non-Phosphopeptide (Phospho-right), using PLK1 (Phospho-Ser137) Antibody



Immunohistochemical analysis of paraffin-embedded human Squamous cell carcinoma of lung. 1, Antibody was diluted at 1:200(4° overnight). 2, Tris-EDTA,pH9.0 was used for antigen retrieval. 3,Secondary antibody was diluted at 1:200(room temperature, 45min).