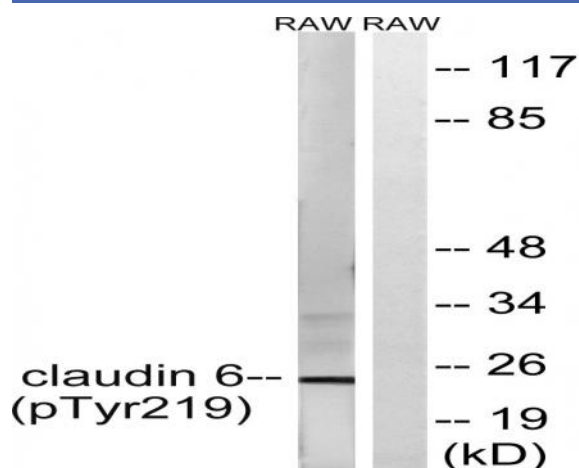


## Claudin-6 (phospho Tyr219) Polyclonal Antibody

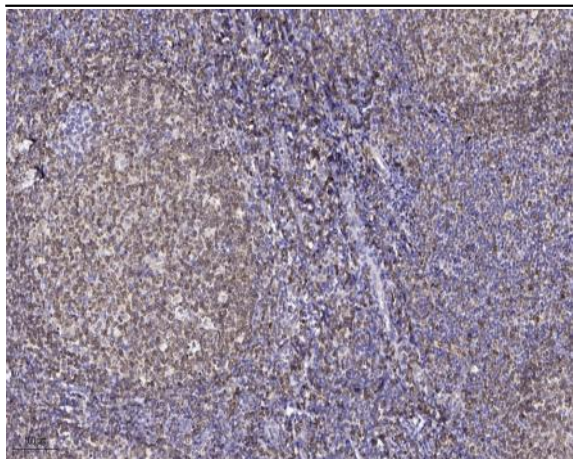
<b>Catalog No :</b>	YP0465
<b>Reactivity :</b>	Human;Mouse
<b>Applications :</b>	WB;IHC;IF;ELISA
<b>Target :</b>	Claudin-6
<b>Fields :</b>	>>Cell adhesion molecules;>>Tight junction;>>Leukocyte transendothelial migration;>>Pathogenic Escherichia coli infection;>>Hepatitis C
<b>Gene Name :</b>	CLDN6
<b>Protein Name :</b>	Claudin-6
<b>Human Gene Id :</b>	9074
<b>Human Swiss Prot No :</b>	P56747
<b>Mouse Gene Id :</b>	54419
<b>Mouse Swiss Prot No :</b>	Q9Z262
<b>Immunogen :</b>	The antiserum was produced against synthesized peptide derived from human Claudin 6 around the phosphorylation site of Tyr219. AA range:171-220
<b>Specificity :</b>	Phospho-Claudin-6 (Y219) Polyclonal Antibody detects endogenous levels of Claudin-6 protein only when phosphorylated at Y219.
<b>Formulation :</b>	Liquid in PBS containing 50% glycerol, 0.5% BSA and 0.02% sodium azide.
<b>Source :</b>	Polyclonal, Rabbit,IgG
<b>Dilution :</b>	WB 1:500 - 1:2000. IHC 1:100 - 1:300. ELISA: 1:5000.. IF 1:50-200
<b>Purification :</b>	The antibody was affinity-purified from rabbit antiserum by affinity-chromatography using epitope-specific immunogen.

<b>Concentration :</b>	1 mg/ml
<b>Storage Stability :</b>	-15°C to -25°C/1 year(Do not lower than -25°C)
<b>Observed Band :</b>	23kD
<b>Cell Pathway :</b>	Cell adhesion molecules (CAMs);Tight junction;Leukocyte transendothelial migration;
<b>Background :</b>	Tight junctions represent one mode of cell-to-cell adhesion in epithelial or endothelial cell sheets, forming continuous seals around cells and serving as a physical barrier to prevent solutes and water from passing freely through the paracellular space. These junctions are comprised of sets of continuous networking strands in the outwardly facing cytoplasmic leaflet, with complementary grooves in the inwardly facing extracytoplasmic leaflet. This gene encodes a component of tight junction strands, which is a member of the claudin family. The protein is an integral membrane protein and is one of the entry cofactors for hepatitis C virus. The gene methylation may be involved in esophageal tumorigenesis. This gene is adjacent to another family member CLDN9 on chromosome 16.[provided by RefSeq, Aug 2010],
<b>Function :</b>	function:Plays a major role in tight junction-specific obliteration of the intercellular space.,similarity:Belongs to the claudin family.,subunit:Directly interacts with TJP1/ZO-1, TJP2/ZO-2 and TJP3/ZO-3.,
<b>Subcellular Location :</b>	Cell junction, tight junction . Cell membrane ; Multi-pass membrane protein .
<b>Expression :</b>	Expressed in the liver, in peripheral blood mononuclear cells and hepatocarcinoma cell lines.

## Products Images



Western blot analysis of lysates from RAW264.7 cells treated with UV 5', using Claudin 6 (Phospho-Tyr219) Antibody. The lane on the right is blocked with the phospho peptide.



Immunohistochemical analysis of paraffin-embedded human tonsil. 1, Antibody was diluted at 1:200(4° overnight). 2, Tris-EDTA,pH9.0 was used for antigen retrieval. 3,Secondary antibody was diluted at 1:200(room temperature, 45min).