

FGFR-4 (phospho Tyr642) Polyclonal Antibody

Catalog No :	YP0509
Reactivity :	Human;Mouse;Rat
Applications :	WB;ELISA
Target :	FGFR-4
Fields :	>>MAPK signaling pathway;>>Ras signaling pathway;>>Rap1 signaling pathway;>>Calcium signaling pathway;>>Endocytosis;>>PI3K-Akt signaling pathway;>>Signaling pathways regulating pluripotency of stem cells;>>Regulation of actin cytoskeleton;>>Pathways in cancer
Gene Name :	FGFR4
Protein Name :	Fibroblast growth factor receptor 4
Human Gene Id :	2264
Human Swiss Prot No :	P22455
Mouse Gene Id :	14186
Mouse Swiss Prot No :	Q03142
Rat Gene Id :	25114
Rat Swiss Prot No :	Q498D6
Immunogen :	Synthesized phospho-peptide around the phosphorylation site of human FGFR-4 (phospho Tyr642)
Specificity :	Phospho-FGFR-4 (Y642) Polyclonal Antibody detects endogenous levels of FGFR-4 protein only when phosphorylated at Y642.
Formulation :	Liquid in PBS containing 50% glycerol, 0.5% BSA and 0.02% sodium azide.
Source :	Polyclonal, Rabbit,IgG

Dilution : WB 1:500 - 1:2000. ELISA: 1:10000. Not yet tested in other applications.

Purification : The antibody was affinity-purified from rabbit antiserum by affinity-chromatography using epitope-specific immunogen.

Concentration : 1 mg/ml

Storage Stability : -15°C to -25°C/1 year(Do not lower than -25°C)

Observed Band : 90kD

Cell Pathway : MAPK_ERK_Growth;MAPK_G_Protein;Endocytosis;Regulates Actin and Cytoskeleton;

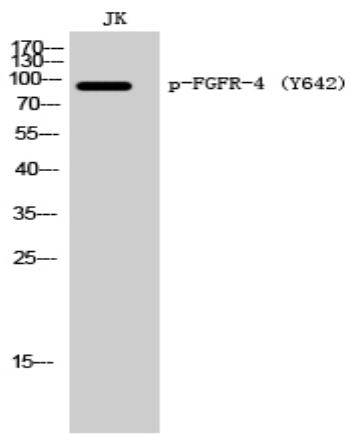
Background : The protein encoded by this gene is a member of the fibroblast growth factor receptor family, where amino acid sequence is highly conserved between members and throughout evolution. FGFR family members differ from one another in their ligand affinities and tissue distribution. A full-length representative protein would consist of an extracellular region, composed of three immunoglobulin-like domains, a single hydrophobic membrane-spanning segment and a cytoplasmic tyrosine kinase domain. The extracellular portion of the protein interacts with fibroblast growth factors, setting in motion a cascade of downstream signals, ultimately influencing mitogenesis and differentiation. The genomic organization of this gene, compared to members 1-3, encompasses 18 exons rather than 19 or 20. Although alternative splicing has been observed, there is no evidence that the C-terminal half of the IgII

Function : catalytic activity:ATP + a [protein]-L-tyrosine = ADP + a [protein]-L-tyrosine phosphate.,function:Receptor for acidic fibroblast growth factor. Does not bind to basic fibroblast growth factor. Binds FGF19.,PTM:Glycosylated (By similarity). Phosphorylated on tyrosine residue (By similarity). Phosphorylation requires the presence of a functional (phosphorylated) FGFR1 and not necessarily by means of FGFR heterodimerization.,similarity:Belongs to the protein kinase superfamily. Tyr protein kinase family.,similarity:Belongs to the protein kinase superfamily. Tyr protein kinase family. Fibroblast growth factor receptor subfamily.,similarity:Contains 1 protein kinase domain.,similarity:Contains 3 Ig-like C2-type (immunoglobulin-like) domains.,subcellular location:Isoform 2 may be secreted.,subunit:Interacts with KLB.,tissue specificity:Expressed in gastrointestinal epithelial cells, pancreas,

Subcellular Location : Cell membrane; Single-pass type I membrane protein. Endosome. Endoplasmic reticulum. Internalized from the cell membrane to recycling endosomes, and from there back to the cell membrane.; [Isoform 2]: Secreted.; [Isoform 3]: Cytoplasm .

Expression : Expressed in gastrointestinal epithelial cells, pancreas, and gastric and pancreatic cancer cell lines.

Products Images



Western Blot analysis of JK cells using Phospho-FGFR-4 (Y642)
Polyclonal Antibody