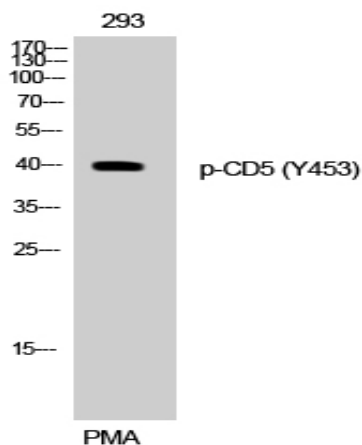


**CD5 (phospho Tyr453) Polyclonal Antibody**

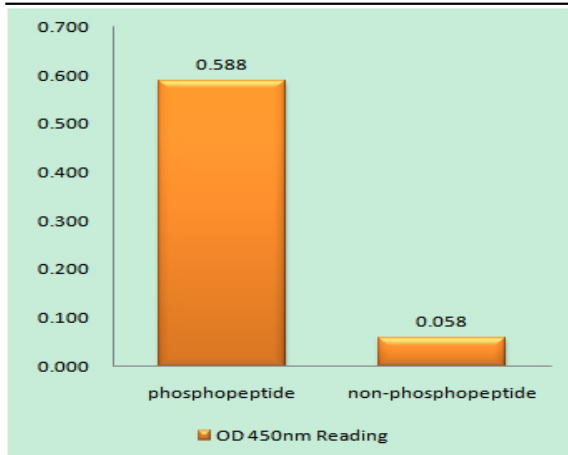
<b>Catalog No :</b>	YP0544
<b>Reactivity :</b>	Human;Mouse;Rat
<b>Applications :</b>	WB;IHC;IF;ELISA
<b>Target :</b>	CD5
<b>Fields :</b>	>>Hematopoietic cell lineage
<b>Gene Name :</b>	CD5
<b>Protein Name :</b>	T-cell surface glycoprotein CD5
<b>Human Gene Id :</b>	921
<b>Human Swiss Prot No :</b>	P06127
<b>Mouse Gene Id :</b>	12507
<b>Mouse Swiss Prot No :</b>	P13379
<b>Rat Gene Id :</b>	54236
<b>Rat Swiss Prot No :</b>	P51882
<b>Immunogen :</b>	The antiserum was produced against synthesized peptide derived from human CD5 around the phosphorylation site of Tyr453. AA range:421-470
<b>Specificity :</b>	Phospho-CD5 (Y453) Polyclonal Antibody detects endogenous levels of CD5 protein only when phosphorylated at Y453.
<b>Formulation :</b>	Liquid in PBS containing 50% glycerol, 0.5% BSA and 0.02% sodium azide.
<b>Source :</b>	Polyclonal, Rabbit,IgG
<b>Dilution :</b>	WB 1:500 - 1:2000. IHC 1:100 - 1:300. IF 1:200 - 1:1000. ELISA: 1:20000. Not yet tested in other applications.

<b>Purification :</b>	The antibody was affinity-purified from rabbit antiserum by affinity-chromatography using epitope-specific immunogen.
<b>Concentration :</b>	1 mg/ml
<b>Storage Stability :</b>	-15°C to -25°C/1 year(Do not lower than -25°C)
<b>Observed Band :</b>	40kD
<b>Cell Pathway :</b>	Hematopoietic cell lineage;
<b>Background :</b>	function:May act as a receptor in regulating T-cell proliferation. CD5 interacts with CD72/LYB-2.,similarity:Contains 3 SRCR domains.,
<b>Function :</b>	function:May act as a receptor in regulating T-cell proliferation. CD5 interacts with CD72/LYB-2.,similarity:Contains 3 SRCR domains.,
<b>Subcellular Location :</b>	Cell membrane; Single-pass type I membrane protein.
<b>Expression :</b>	Lymphocyte,Pancreas,Tonsil,

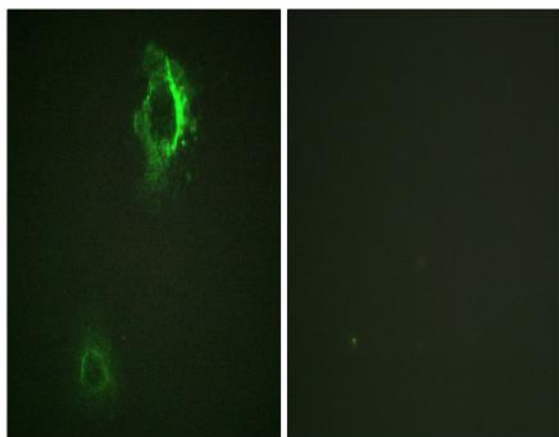
## Products Images



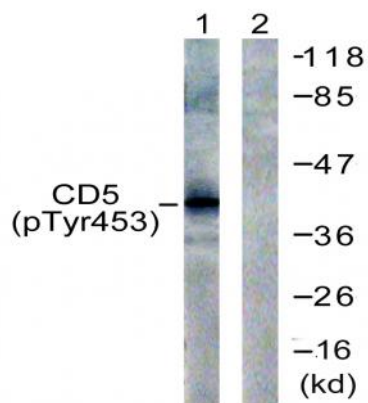
Western Blot analysis of 293 cells using Phospho-CD5 (Y453) Polyclonal Antibody



Enzyme-Linked Immunosorbent Assay (Phospho-ELISA) for Immunogen Phosphopeptide (Phospho-left) and Non-Phosphopeptide (Phospho-right), using CD5 (Phospho-Tyr453) Antibody



Immunofluorescence analysis of HepG2 cells, using CD5 (Phospho-Tyr453) Antibody. The picture on the right is blocked with the phospho peptide.



Western blot analysis of lysates from 293 cells treated with PMA 125ng/ml 30', using CD5 (Phospho-Tyr453) Antibody. The lane on the right is blocked with the phospho peptide.