

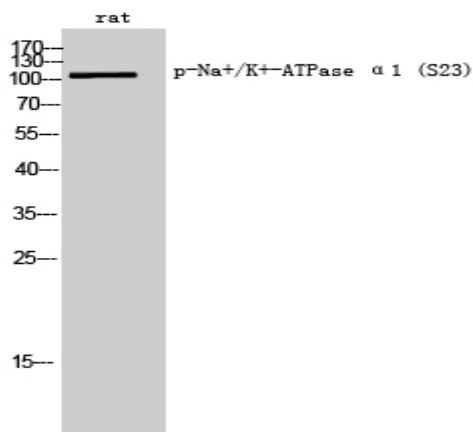
Na⁺/K⁺-ATPase α1 (phospho Ser23) Polyclonal Antibody

| | |
|------------------------------|---|
| Catalog No : | YP0563 |
| Reactivity : | Rat |
| Applications : | WB;IF;ELISA |
| Target : | Na ⁺ /K ⁺ -ATPase α1 |
| Gene Name : | ATP1A1 |
| Protein Name : | Sodium/potassium-transporting ATPase subunit alpha-1 |
| Human Swiss Prot No : | P05023 |
| Rat Gene Id : | 24211 |
| Rat Swiss Prot No : | P06685 |
| Immunogen : | The antiserum was produced against synthesized peptide derived from rat ATP1 alpha1/Na ⁺ K ⁺ ATPase1 around the phosphorylation site of Ser23. AA range:15-64 |
| Specificity : | Phospho-Na ⁺ /K ⁺ -ATPase α1 (S23) Polyclonal Antibody detects endogenous levels of Na ⁺ /K ⁺ -ATPase α1 protein only when phosphorylated at S23. |
| Formulation : | Liquid in PBS containing 50% glycerol, 0.5% BSA and 0.02% sodium azide. |
| Source : | Polyclonal, Rabbit,IgG |
| Dilution : | WB 1:500 - 1:2000. IF 1:100 - 1:300. ELISA: 1:5000. Not yet tested in other applications. |
| Purification : | The antibody was affinity-purified from rabbit antiserum by affinity-chromatography using epitope-specific immunogen. |
| Concentration : | 1 mg/ml |
| Storage Stability : | -15°C to -25°C/1 year(Do not lower than -25°C) |

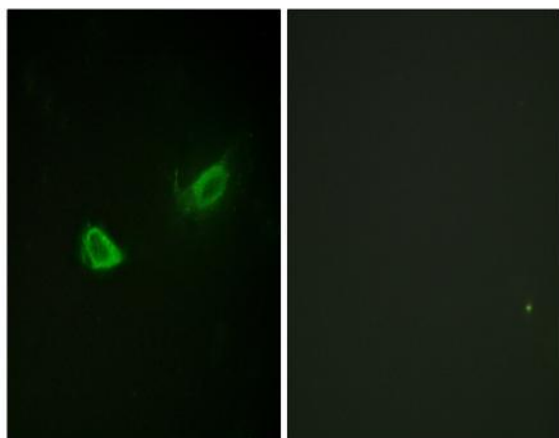
Observed Band : 113kD**Background :**

The ATPase Na⁺/K⁺ transporting subunit alpha 1 encoded by ATP1A1 belongs to the family of P-type cation transport ATPases, and to the subfamily of Na⁺/K⁺-ATPases. Na⁺/K⁺-ATPase is an integral membrane protein responsible for establishing and maintaining the electrochemical gradients of Na and K ions across the plasma membrane. These gradients are essential for osmoregulation, for sodium-coupled transport of a variety of organic and inorganic molecules, and for electrical excitability of nerve and muscle. This enzyme is composed of two subunits, a large catalytic subunit (alpha) and a smaller glycoprotein subunit (beta). The catalytic subunit of Na⁺/K⁺-ATPase is encoded by multiple genes. This gene encodes an alpha 1 subunit. Multiple transcript variants encoding different isoforms have been found for this gene.

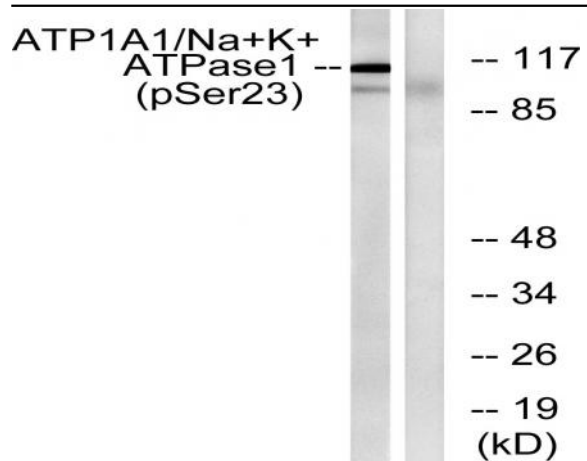
Products Images



Western Blot analysis of rat cells using Phospho-Na⁺/K⁺-ATPase alpha 1 (S23) Polyclonal Antibody



Immunofluorescence analysis of NIH/3T3 cells, using ATP1 alpha1/Na⁺K⁺ ATPase1 (Phospho-Ser23) Antibody. The picture on the right is blocked with the phospho peptide.



Western blot analysis of lysates from rat brain, using ATP1 alpha1/Na⁺K⁺ ATPase1 (Phospho-Ser23) Antibody. The lane on the right is blocked with the phospho peptide.