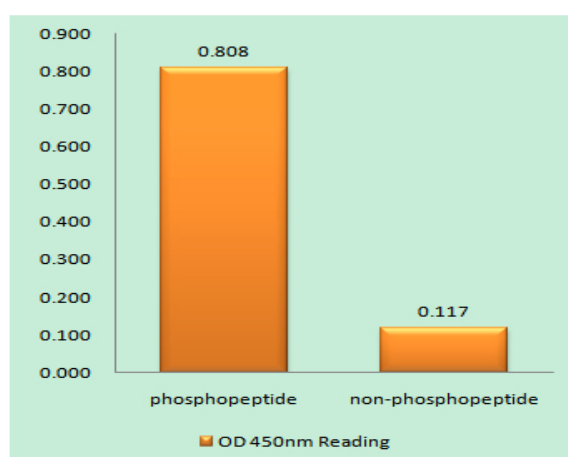


CD88 (phospho Ser338) Polyclonal Antibody

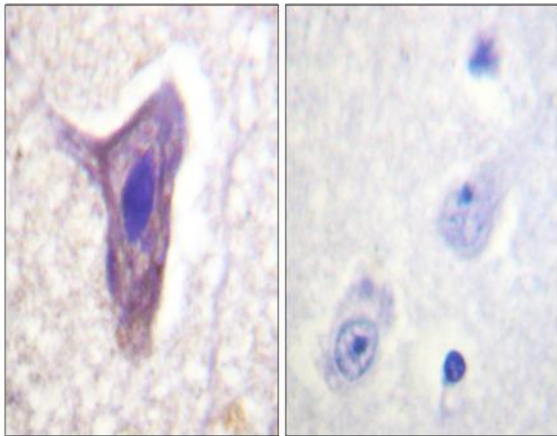
Catalog No :	YP0982
Reactivity :	Human;Rat;Mouse;
Applications :	IHC;IF;ELISA
Target :	CD88
Fields :	>>Neuroactive ligand-receptor interaction;>>Complement and coagulation cascades;>>Neutrophil extracellular trap formation;>>Alcoholic liver disease;>>Staphylococcus aureus infection;>>Coronavirus disease - COVID-19
Gene Name :	C5AR1
Protein Name :	C5a anaphylatoxin chemotactic receptor
Human Gene Id :	728
Human Swiss Prot No :	P21730
Mouse Swiss Prot No :	P30993
Immunogen :	The antiserum was produced against synthesized peptide derived from human CD88/C5aR around the phosphorylation site of Ser338. AA range:301-350
Specificity :	Phospho-CD88 (S338) Polyclonal Antibody detects endogenous levels of CD88 protein only when phosphorylated at S338.
Formulation :	Liquid in PBS containing 50% glycerol, 0.5% BSA and 0.02% sodium azide.
Source :	Polyclonal, Rabbit,IgG
Dilution :	IHC 1:100 - 1:300. ELISA: 1:40000.. IF 1:50-200
Purification :	The antibody was affinity-purified from rabbit antiserum by affinity-chromatography using epitope-specific immunogen.
Concentration :	1 mg/ml

Storage Stability :	-15 °C to -25 °C/1 year(Do not lower than -25 °C)
Molecularweight :	39kD
Cell Pathway :	Neuroactive ligand-receptor interaction;Complement and coagulation cascades;
Background :	function:Receptor for the chemotactic and inflammatory peptide anaphylatoxin C5a. This receptor stimulates chemotaxis, granule enzyme release and superoxide anion production.,PTM:Sulfation plays a critical role in the association of the receptor with C5a, but no significant role in the ability of the receptor to transduce a signal and mobilize calcium in response to a small peptide agonist.,similarity:Belongs to the G-protein coupled receptor 1 family.,
Function :	function:Receptor for the chemotactic and inflammatory peptide anaphylatoxin C5a. This receptor stimulates chemotaxis, granule enzyme release and superoxide anion production.,PTM:Sulfation plays a critical role in the association of the receptor with C5a, but no significant role in the ability of the receptor to transduce a signal and mobilize calcium in response to a small peptide agonist.,similarity:Belongs to the G-protein coupled receptor 1 family.,
Subcellular Location :	Cell membrane ; Multi-pass membrane protein . Cytoplasmic vesicle . Phosphorylated C5aR colocalizes with ARRB1 and ARRB2 in cytoplasmic vesicles. .
Expression :	Brain,

Products Images



Enzyme-Linked Immunosorbent Assay (Phospho-ELISA) for Immunogen Phosphopeptide (Phospho-left) and Non-Phosphopeptide (Phospho-right), using CD88/C5aR (Phospho-Ser338) Antibody



Immunohistochemistry analysis of paraffin-embedded human brain, using CD88/C5aR (Phospho-Ser338) Antibody. The picture on the right is blocked with the phospho peptide.