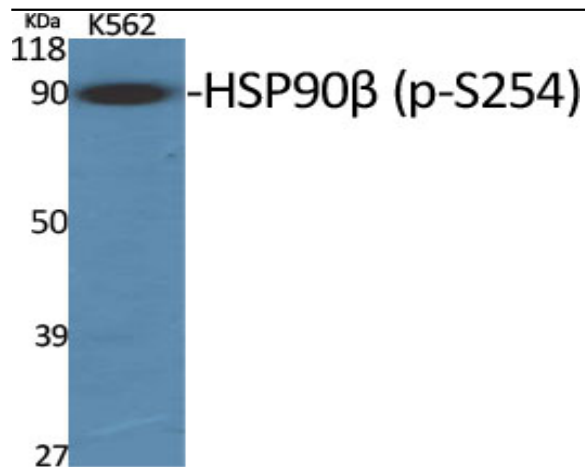


HSP90 β (phospho Ser254) Polyclonal Antibody

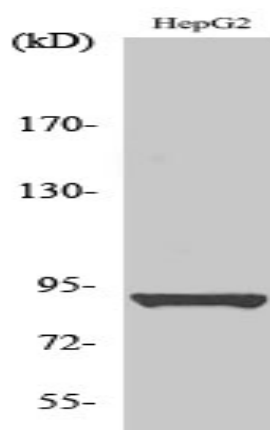
Catalog No :	YP0857
Reactivity :	Human;Mouse;Rat;Monkey
Applications :	WB;IHC;IF;ELISA
Target :	HSP90B
Fields :	>>Protein processing in endoplasmic reticulum;>>PI3K-Akt signaling pathway;>>Necroptosis;>>Antigen processing and presentation;>>NOD-like receptor signaling pathway;>>IL-17 signaling pathway;>>Th17 cell differentiation;>>Progesterone-mediated oocyte maturation;>>Estrogen signaling pathway;>>Salmonella infection;>>Pathways in cancer;>>Chemical carcinogenesis - receptor activation;>>Prostate cancer;>>Lipid and atherosclerosis;>>Fluid shear stress and atherosclerosis
Gene Name :	HSP90AB1
Protein Name :	Heat shock protein HSP 90-beta
Human Gene Id :	3326
Human Swiss Prot No :	P08238
Mouse Gene Id :	15516
Mouse Swiss Prot No :	P11499
Rat Gene Id :	301252
Rat Swiss Prot No :	P34058
Immunogen :	The antiserum was produced against synthesized peptide derived from human HSP90B around the phosphorylation site of Ser254. AA range:226-275
Specificity :	Phospho-HSP90 β (S254) Polyclonal Antibody detects endogenous levels of HSP90 β protein only when phosphorylated at S254. Liquid in PBS containing 50% glycerol, 0.5% BSA and 0.02% sodium azide.

Formulation :	Polyclonal, Rabbit,IgG
Dilution :	WB 1:500 - 1:2000. IHC 1:100 - 1:300. IF 1:200 - 1:1000. ELISA: 1:40000. Not yet tested in other applications.
Purification :	The antibody was affinity-purified from rabbit antiserum by affinity-chromatography using epitope-specific immunogen.
Concentration :	1 mg/ml
Storage Stability :	-15°C to -25°C/1 year(Do not lower than -25°C)
Observed Band :	90kD
Cell Pathway :	PI3K/Akt; Protein_Acetylation
Background :	This gene encodes a member of the heat shock protein 90 family; these proteins are involved in signal transduction, protein folding and degradation and morphological evolution. This gene encodes the constitutive form of the cytosolic 90 kDa heat-shock protein and is thought to play a role in gastric apoptosis and inflammation. Alternative splicing results in multiple transcript variants. Pseudogenes have been identified on multiple chromosomes. [provided by RefSeq, Dec 2012],
Function :	function:Molecular chaperone. Has ATPase activity.,PTM:Phosphorylated upon DNA damage, probably by ATM or ATR.,similarity:Belongs to the heat shock protein 90 family.,subcellular location:Identified by mass spectrometry in melanosome fractions from stage I to stage IV.,subunit:Homodimer. Interacts with TP53/p53 (By similarity). Interacts with UNC45A. Binding to UNC45A involves 2 UNC45A monomers per HSP90AB1 dimer.,
Subcellular Location :	Cytoplasm . Melanosome . Nucleus . Secreted . Cell membrane . Dynein axonemal particle . Cell surface . Identified by mass spectrometry in melanosome fractions from stage I to stage IV (PubMed:17081065). Translocates with BIRC2 from the nucleus to the cytoplasm during differentiation (PubMed:18239673). Secreted when associated with TGFB1 processed form (LAP) (PubMed:20599762). .
Expression :	Amygdala,Brain cortex,Colon,Colon carcinoma,Embryon

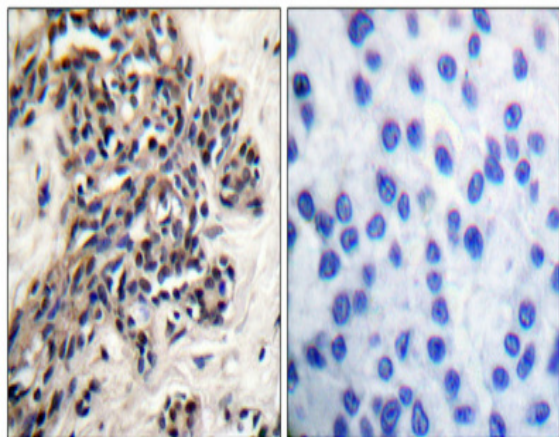
Products Images



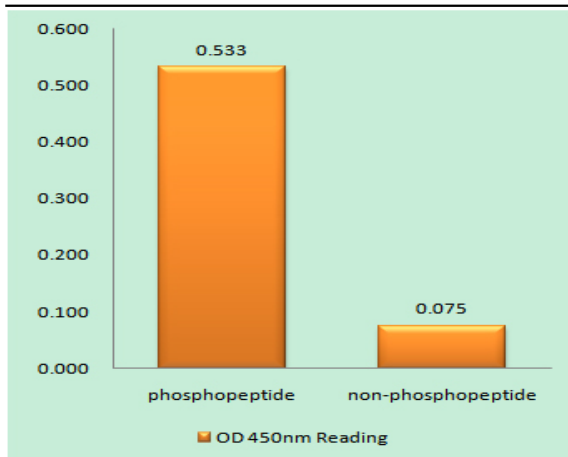
Western Blot analysis of various cells using Phospho-HSP90 β (S254) Polyclonal Antibody



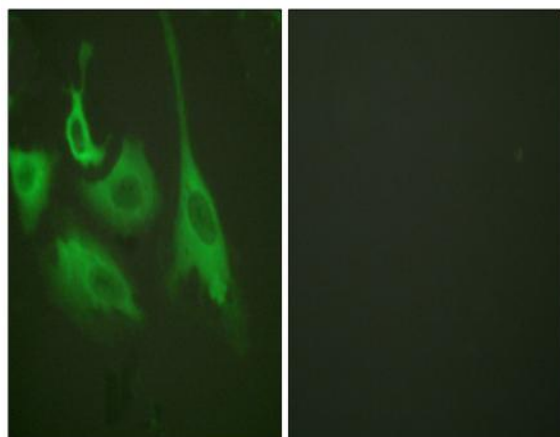
Western Blot analysis of HepG2 cells using Phospho-HSP90 β (S254) Polyclonal Antibody



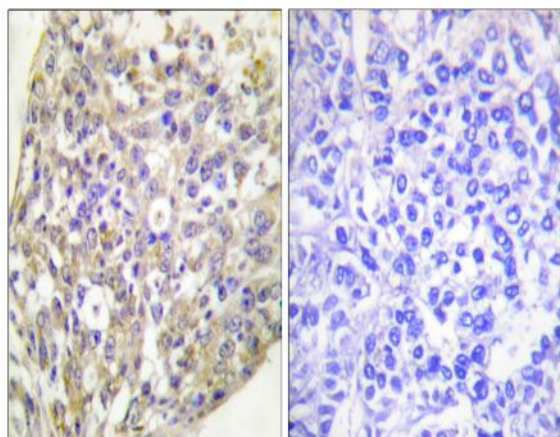
Immunohistochemical analysis of paraffin-embedded Human breast cancer. Antibody was diluted at 1:100(4° overnight). High-pressure and temperature Tris-EDTA,pH8.0 was used for antigen retrieval. Negative contrl (right) obtained from antibody was pre-absorbed by immunogen peptide.



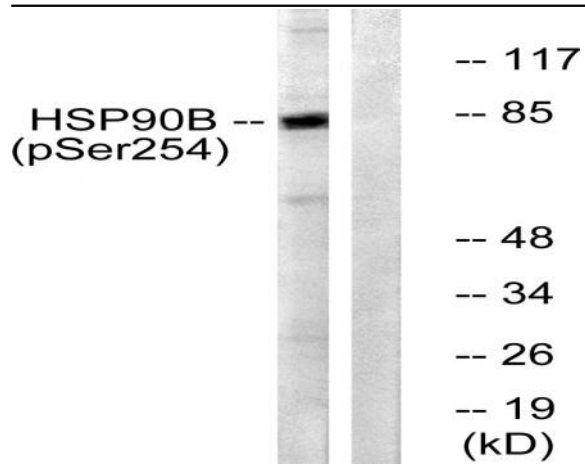
Enzyme-Linked Immunosorbent Assay (Phospho-ELISA) for Immunogen Phosphopeptide (Phospho-left) and Non-Phosphopeptide (Phospho-right), using HSP90B (Phospho-Ser254) Antibody



Immunofluorescence analysis of HeLa cells treated with TNF- α 20nM 15', using HSP90B (Phospho-Ser254) Antibody. The picture on the right is blocked with the phospho peptide.



Immunohistochemistry analysis of paraffin-embedded human breast carcinoma, using HSP90B (Phospho-Ser254) Antibody. The picture on the right is blocked with the phospho peptide.



Western blot analysis of lysates from HeLa cells treated with TNF- α 10ng/ml 30', using HSP90B (Phospho-Ser254) Antibody. The lane on the right is blocked with the phospho peptide.