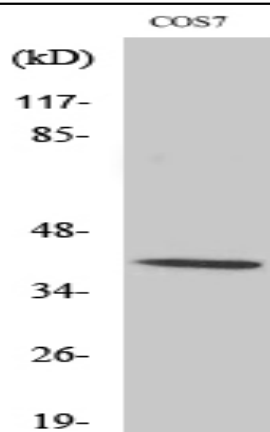


Crk-L (phospho Tyr207) Polyclonal Antibody

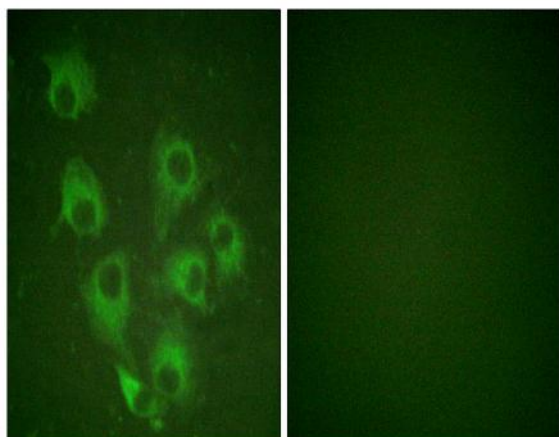
Catalog No :	YP0869
Reactivity :	Human;Mouse;Rat;Monkey
Applications :	WB;IHC;IF;ELISA
Target :	Crk-L
Fields :	>>MAPK signaling pathway;>>ErbB signaling pathway;>>Rap1 signaling pathway;>>Chemokine signaling pathway;>>Focal adhesion;>>Fc gamma R-mediated phagocytosis;>>Neurotrophin signaling pathway;>>Regulation of actin cytoskeleton;>>Insulin signaling pathway;>>Growth hormone synthesis, secretion and action;>>Bacterial invasion of epithelial cells;>>Shigellosis;>>Yersinia infection;>>Human cytomegalovirus infection;>>Human immunodeficiency virus 1 infection;>>Pathways in cancer;>>MicroRNAs in cancer;>>Renal cell carcinoma;>>Chronic myeloid leukemia
Gene Name :	CRKL
Protein Name :	Crk-like protein
Human Gene Id :	1399
Human Swiss Prot No :	P46109
Mouse Gene Id :	12929
Mouse Swiss Prot No :	P47941
Rat Gene Id :	1.00911e+008
Rat Swiss Prot No :	Q5U2U2
Immunogen :	The antiserum was produced against synthesized peptide derived from human CrkL around the phosphorylation site of Tyr207. AA range:173-222
Specificity :	Phospho-Crk-L (Y207) Polyclonal Antibody detects endogenous levels of Crk-L protein only when phosphorylated at Y207.

Formulation :	Liquid in PBS containing 50% glycerol, 0.5% BSA and 0.02% sodium azide.
Source :	Polyclonal, Rabbit,IgG
Dilution :	WB 1:500 - 1:2000. IHC 1:100 - 1:300. IF 1:200 - 1:1000. ELISA: 1:5000. Not yet tested in other applications.
Purification :	The antibody was affinity-purified from rabbit antiserum by affinity-chromatography using epitope-specific immunogen.
Concentration :	1 mg/ml
Storage Stability :	-15°C to -25°C/1 year(Do not lower than -25°C)
Observed Band :	39kD
Cell Pathway :	MAPK_ERK_Growth;MAPK_G_Protein;ErbB_HER;Chemokine;Focal adhesion;Fc gamma R-mediated phagocytosis;Neurotrophin;Regulates Actin and Cytoskeleton;Insulin_Receptor;Pathways in cancer;Renal cell carcinoma
Background :	This gene encodes a protein kinase containing SH2 and SH3 (src homology) domains which has been shown to activate the RAS and JUN kinase signaling pathways and transform fibroblasts in a RAS-dependent fashion. It is a substrate of the BCR-ABL tyrosine kinase, plays a role in fibroblast transformation by BCR-ABL, and may be oncogenic.[provided by RefSeq, Jan 2009],
Function :	function:May mediate the transduction of intracellular signals.,similarity:Contains 1 SH2 domain.,similarity:Contains 2 SH3 domains.,subunit:Interacts with INPP5D/SHIP1. Interacts with DOCK2 and EPOR. Interacts with phosphorylated CBLB and IRS4.,
Subcellular Location :	endosome,cytosol,cell-cell adherens junction,extracellular exosome,
Expression :	Skin,Spleen,

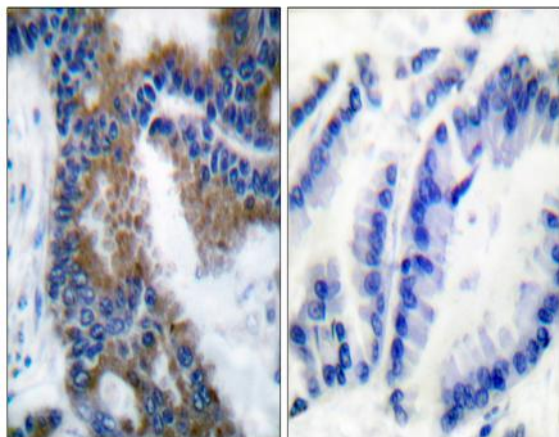
Products Images



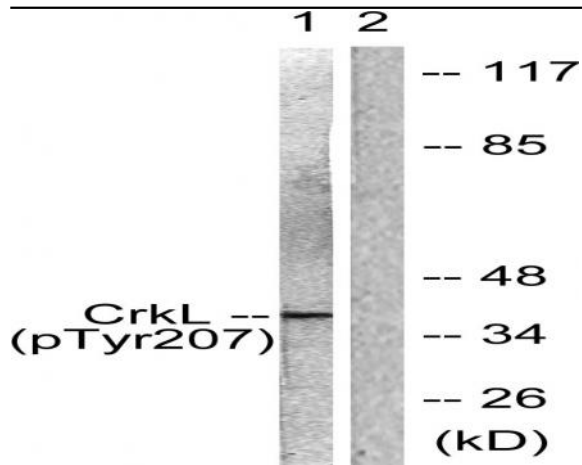
Western Blot analysis of various cells using Phospho-Crk-L (Y207) Polyclonal Antibody



Immunofluorescence analysis of HUVEC cells, using CrkL (Phospho-Tyr207) Antibody. The picture on the right is blocked with the phospho peptide.



Immunohistochemistry analysis of paraffin-embedded human lung carcinoma, using CrkL (Phospho-Tyr207) Antibody. The picture on the right is blocked with the phospho peptide.



Western blot analysis of lysates from COS7 cells, using CrkL (Phospho-Tyr207) Antibody. The lane on the right is blocked with the phospho peptide.