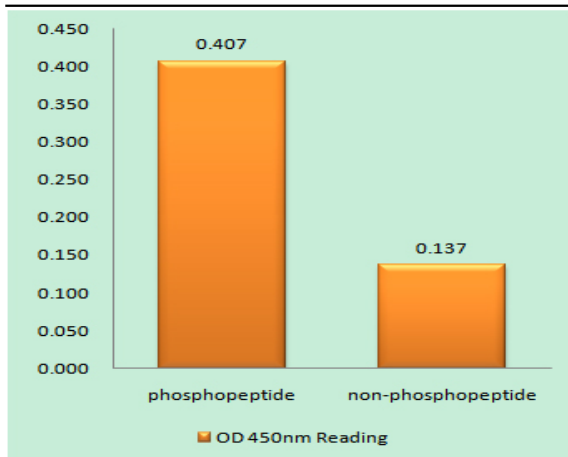


Cbl (phospho Tyr700) Polyclonal Antibody

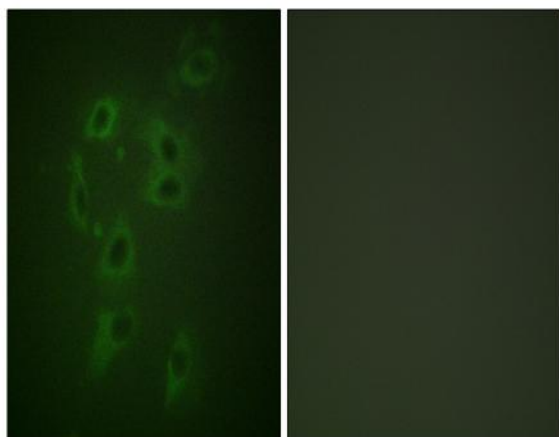
Catalog No :	YP0876
Reactivity :	Human;Mouse;Rat
Applications :	WB;IHC;IF;ELISA
Target :	Cbl
Fields :	>>ErbB signaling pathway;>>Ubiquitin mediated proteolysis;>>Endocytosis;>>Insulin signaling pathway;>>Bacterial invasion of epithelial cells;>>Pathways in cancer;>>Proteoglycans in cancer;>>Chronic myeloid leukemia
Gene Name :	CBL
Protein Name :	E3 ubiquitin-protein ligase CBL
Human Gene Id :	867
Human Swiss Prot No :	P22681
Mouse Gene Id :	12402
Mouse Swiss Prot No :	P22682
Immunogen :	The antiserum was produced against synthesized peptide derived from human CBL around the phosphorylation site of Tyr700. AA range:666-715
Specificity :	Phospho-Cbl (Y700) Polyclonal Antibody detects endogenous levels of Cbl protein only when phosphorylated at Y700.
Formulation :	Liquid in PBS containing 50% glycerol, 0.5% BSA and 0.02% sodium azide.
Source :	Polyclonal, Rabbit,IgG
Dilution :	WB 1:500 - 1:2000. IHC 1:100 - 1:300. IF 1:200 - 1:1000. ELISA: 1:10000. Not yet tested in other applications.

Purification :	The antibody was affinity-purified from rabbit antiserum by affinity-chromatography using epitope-specific immunogen.
Concentration :	1 mg/ml
Storage Stability :	-15°C to -25°C/1 year(Do not lower than -25°C)
Observed Band :	120kD
Cell Pathway :	ErbB_HER;Ubiquitin mediated proteolysis;Endocytosis;Jak_STAT;T_Cell_Receptor;Insulin_Receptor;Pathways in cancer;Chronic myeloid leukemia;
Background :	Cbl proto-oncogene(CBL) Homo sapiens This gene is a proto-oncogene that encodes a RING finger E3 ubiquitin ligase. The encoded protein is one of the enzymes required for targeting substrates for degradation by the proteasome. This protein mediates the transfer of ubiquitin from ubiquitin conjugating enzymes (E2) to specific substrates. This protein also contains an N-terminal phosphotyrosine binding domain that allows it to interact with numerous tyrosine-phosphorylated substrates and target them for proteasome degradation. As such it functions as a negative regulator of many signal transduction pathways. This gene has been found to be mutated or translocated in many cancers including acute myeloid leukaemia, and expansion of CGG repeats in the 5' UTR has been associated with Jacobsen syndrome. Mutations in this gene are also the cause of Noonan syndrome-like disorder. [provided by RefSeq, Jul 2016],
Function :	disease:Can be converted to an oncogenic protein by deletions or mutations that disturb its ability to down-regulate RTKs.,domain:The N-terminus is composed of the phosphotyrosine binding (PTB) domain, a short linker region and the RING-type zinc finger. The PTB domain, which is also called TKB (tyrosine kinase binding) domain, is composed of three different subdomains: a four-helix bundle (4H), a calcium-binding EF hand and a divergent SH2 domain.,domain:The RING-type zinc finger domain mediates binding to an E2 ubiquitin-conjugating enzyme.,function:Participates in signal transduction in hematopoietic cells. Adapter protein that functions as a negative regulator of many signaling pathways that start from receptors at the cell surface. Acts as an E3 ubiquitin-protein ligase, which accepts ubiquitin from specific E2 ubiquitin-conjugating enzymes, and then transfers it to substrates promo
Subcellular Location :	Cytoplasm. Cell membrane. Cell projection, cilium . Golgi apparatus . Colocalizes with FGFR2 in lipid rafts at the cell membrane.
Expression :	Epithelium,T-cell,

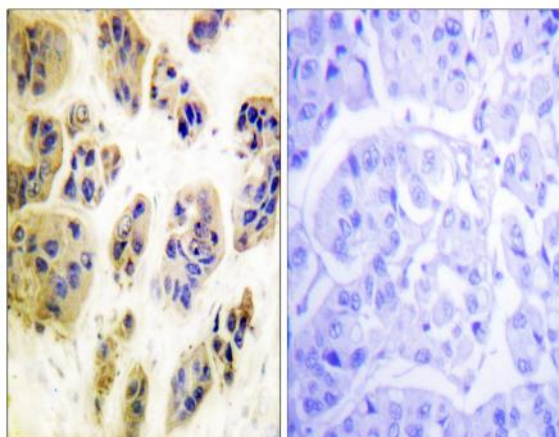
Products Images



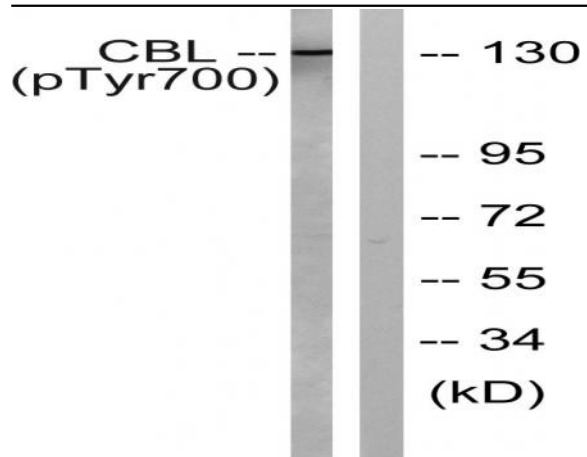
Enzyme-Linked Immunosorbent Assay (Phospho-ELISA) for Immunogen Phosphopeptide (Phospho-left) and Non-Phosphopeptide (Phospho-right), using CBL (Phospho-Tyr700) Antibody



Immunofluorescence analysis of HepG2 cells, using CBL (Phospho-Tyr700) Antibody. The picture on the right is blocked with the phospho peptide.



Immunohistochemistry analysis of paraffin-embedded human breast carcinoma, using CBL (Phospho-Tyr700) Antibody. The picture on the right is blocked with the phospho peptide.



Western blot analysis of lysates from K562 cells treated with Na₃VO₄ 0.3nM, using CBL (Phospho-Tyr700) Antibody. The lane on the right is blocked with the phospho peptide.