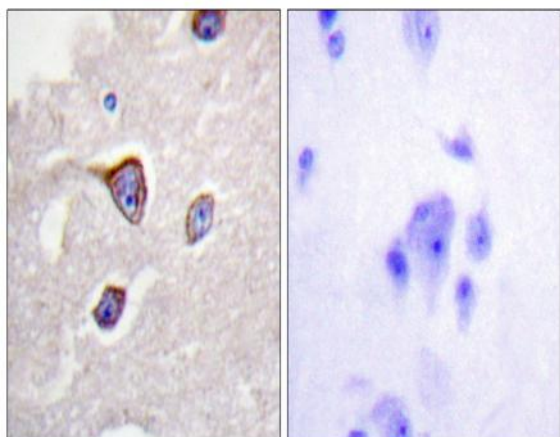


**GRK 1 (phospho Ser21) Polyclonal Antibody**

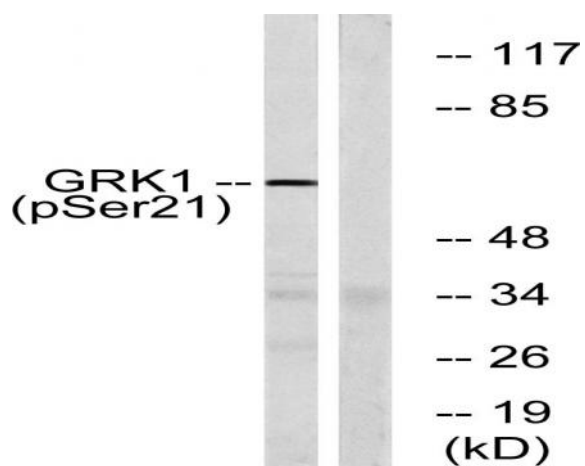
<b>Catalog No :</b>	YP0741
<b>Reactivity :</b>	Human;Mouse;Rat;Monkey
<b>Applications :</b>	WB;IHC;IF;ELISA
<b>Target :</b>	GRK1
<b>Fields :</b>	>>Chemokine signaling pathway;>>Endocytosis;>>Phototransduction
<b>Gene Name :</b>	GRK1
<b>Protein Name :</b>	Rhodopsin kinase
<b>Human Gene Id :</b>	6011
<b>Human Swiss Prot No :</b>	Q15835
<b>Mouse Swiss Prot No :</b>	Q9WVL4
<b>Rat Gene Id :</b>	81760
<b>Rat Swiss Prot No :</b>	Q63651
<b>Immunogen :</b>	The antiserum was produced against synthesized peptide derived from human GRK1 around the phosphorylation site of Ser21. AA range:6-55
<b>Specificity :</b>	Phospho-GRK 1 (S21) Polyclonal Antibody detects endogenous levels of GRK 1 protein only when phosphorylated at S21.
<b>Formulation :</b>	Liquid in PBS containing 50% glycerol, 0.5% BSA and 0.02% sodium azide.
<b>Source :</b>	Polyclonal, Rabbit,IgG
<b>Dilution :</b>	WB 1:500 - 1:2000. IHC 1:100 - 1:300. ELISA: 1:5000.. IF 1:50-200
<b>Purification :</b>	The antibody was affinity-purified from rabbit antiserum by affinity-chromatography using epitope-specific immunogen.

<b>Concentration :</b>	1 mg/ml
<b>Storage Stability :</b>	-15°C to -25°C/1 year(Do not lower than -25°C)
<b>Observed Band :</b>	63kD
<b>Cell Pathway :</b>	Chemokine;Endocytosis;
<b>Background :</b>	This gene encodes a member of the guanine nucleotide-binding protein (G protein)-coupled receptor kinase subfamily of the Ser/Thr protein kinase family. The protein phosphorylates rhodopsin and initiates its deactivation. Defects in GRK1 are known to cause Oguchi disease 2 (also known as stationary night blindness Oguchi type-2). [provided by RefSeq, Jul 2008],
<b>Function :</b>	<p>catalytic activity:ATP + [rhodopsin] = ADP + [rhodopsin] phosphate.,disease:Defects in GRK1 are a cause of congenital stationary night blindness Oguchi type (CSNBO) [MIM:258100]; also known as Oguchi disease. Congenital stationary night blindness is a non-progressive retinal disorder characterized by impaired night vision. CSNBO is an autosomal recessive form associated with fundus discoloration and abnormally slow dark adaptation.,function:Phosphorylates rhodopsin thereby initiating its deactivation.,online information:Retina International's Scientific Newsletter,PTM:Autophosphorylated.,PTM:Farnesylation is required for full activity.,similarity:Belongs to the protein kinase superfamily. AGC Ser/Thr protein kinase family. GPRK subfamily.,similarity:Contains 1 AGC-kinase C-terminal domain.,similarity:Contains 1 protein kinase domain.,similarity:Contains 1 RGS domain.,tissue specificity:R</p>
<b>Subcellular Location :</b>	Membrane ; Lipid-anchor . Cell projection, cilium, photoreceptor outer segment . Subcellular location is not affected by light or dark conditions. .
<b>Expression :</b>	Retinal-specific. Expressed in rods and cones cells.

## Products Images



Immunohistochemistry analysis of paraffin-embedded human brain, using GRK1 (Phospho-Ser21) Antibody. The picture on the right is blocked with the phospho peptide.



Western blot analysis of lysates from COS7 cells treated with TNF 20ng/ml 5', using GRK1 (Phospho-Ser21) Antibody. The lane on the right is blocked with the phospho peptide.