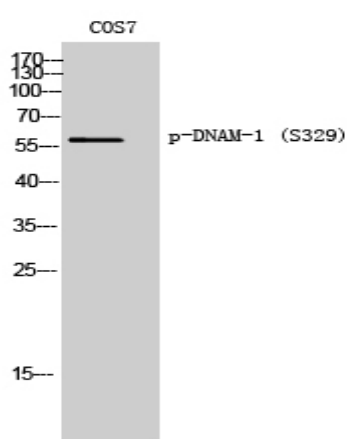


**DNAM-1 (phospho Ser329) Polyclonal Antibody**

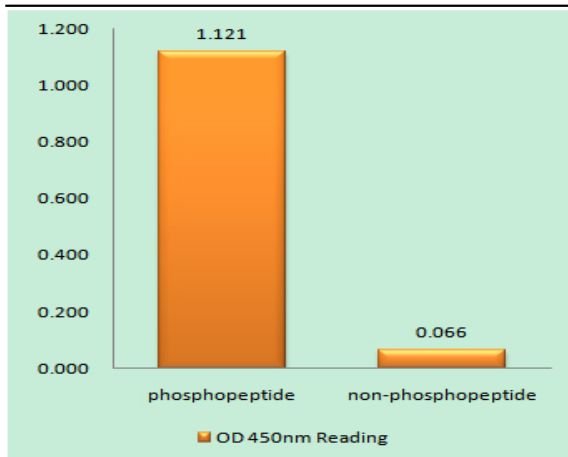
<b>Catalog No :</b>	YP0914
<b>Reactivity :</b>	Human;Mouse;Monkey
<b>Applications :</b>	WB;IHC;IF;ELISA
<b>Target :</b>	DNAM-1
<b>Fields :</b>	>>Cell adhesion molecules
<b>Gene Name :</b>	CD226
<b>Protein Name :</b>	CD226 antigen
<b>Human Gene Id :</b>	10666
<b>Human Swiss Prot No :</b>	Q15762
<b>Mouse Gene Id :</b>	225825
<b>Mouse Swiss Prot No :</b>	Q8K4F0
<b>Immunogen :</b>	The antiserum was produced against synthesized peptide derived from human CD226/DNAM-1 around the phosphorylation site of Ser329. AA range:287-336
<b>Specificity :</b>	Phospho-DNAM-1 (S329) Polyclonal Antibody detects endogenous levels of DNAM-1 protein only when phosphorylated at S329.
<b>Formulation :</b>	Liquid in PBS containing 50% glycerol, 0.5% BSA and 0.02% sodium azide.
<b>Source :</b>	Polyclonal, Rabbit,IgG
<b>Dilution :</b>	WB 1:500 - 1:2000. IHC 1:100 - 1:300. IF 1:200 - 1:1000. ELISA: 1:40000. Not yet tested in other applications.
<b>Purification :</b>	The antibody was affinity-purified from rabbit antiserum by affinity-chromatography using epitope-specific immunogen.

<b>Concentration :</b>	1 mg/ml
<b>Storage Stability :</b>	-15°C to -25°C/1 year(Do not lower than -25°C)
<b>Observed Band :</b>	60kD
<b>Cell Pathway :</b>	Cell adhesion molecules (CAMs);
<b>Background :</b>	This gene encodes a glycoprotein expressed on the surface of NK cells, platelets, monocytes and a subset of T cells. It is a member of the Ig-superfamily containing 2 Ig-like domains of the V-set. The protein mediates cellular adhesion of platelets and megakaryocytic cells to vascular endothelial cells. The protein also plays a role in megakaryocytic cell maturation. Alternative splicing results in multiple transcript variants. [provided by RefSeq, Jan 2015],
<b>Function :</b>	function:Receptor involved in intercellular adhesion, lymphocyte signaling, cytotoxicity and lymphokine secretion mediated by cytotoxic T-lymphocyte (CTL) and NK cell.,PTM:Phosphorylated.,similarity:Contains 2 Ig-like C2-type (immunoglobulin-like) domains.,subunit:Interacts with PVR and PVRL2.,tissue specificity:Expressed by peripheral blood T-lymphocytes.,
<b>Subcellular Location :</b>	Cell membrane ; Single-pass type I membrane protein .
<b>Expression :</b>	Expressed by peripheral blood T-lymphocytes.

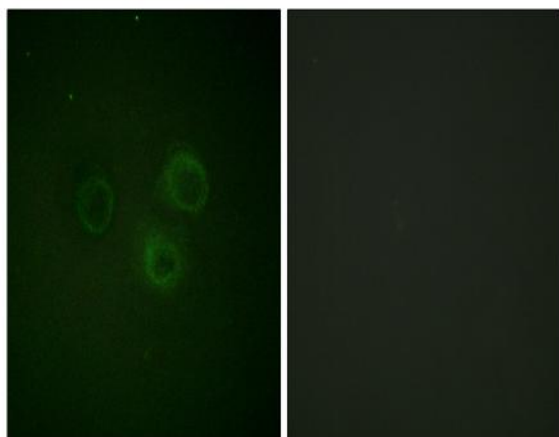
## Products Images



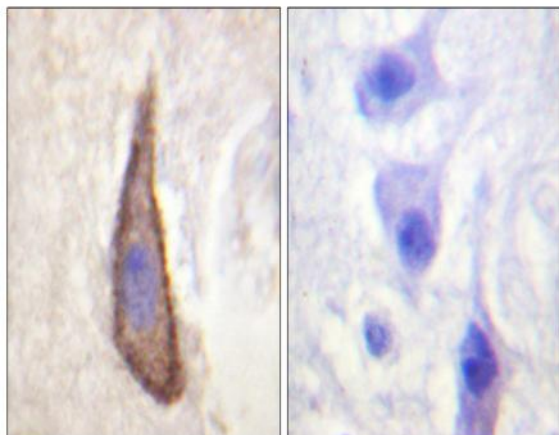
Western Blot analysis of COS7 cells using Phospho-DNAM-1 (S329) Polyclonal Antibody



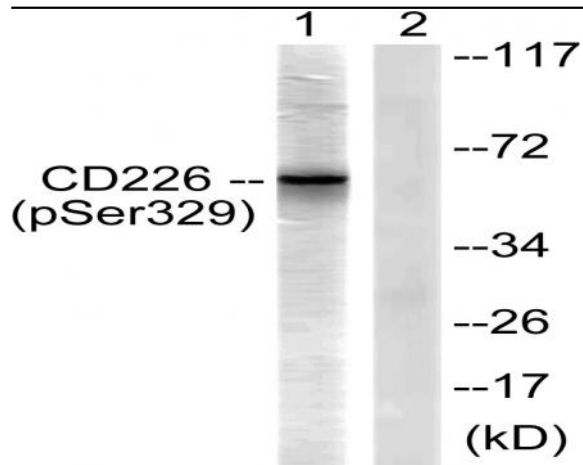
Enzyme-Linked Immunosorbent Assay (Phospho-ELISA) for Immunogen Phosphopeptide (Phospho-left) and Non-Phosphopeptide (Phospho-right), using CD226/DNAM-1 (Phospho-Ser329) Antibody



Immunofluorescence analysis of A549 cells, using CD226/DNAM-1 (Phospho-Ser329) Antibody. The picture on the right is blocked with the phosphopeptide.



Immunohistochemistry analysis of paraffin-embedded human brain, using CD226/DNAM-1 (Phospho-Ser329) Antibody. The picture on the right is blocked with the phosphopeptide.



Western blot analysis of lysates from COS7 cells, using CD226/DNAM-1 (Phospho-Ser329) Antibody. The lane on the right is blocked with the phospho peptide.