

IGF-IIR (phospho Ser2409) Polyclonal Antibody

Catalog No :	YP0763
Reactivity :	Human;Mouse;Monkey
Applications :	WB;IHC;IF;ELISA
Target :	IGF2R
Fields :	>>Lysosome;>>Endocytosis
Gene Name :	IGF2R
Protein Name :	Cation-independent mannose-6-phosphate receptor
Human Gene Id :	3482
Human Swiss Prot No :	P11717
Mouse Gene Id :	16004
Mouse Swiss Prot No :	Q07113
Immunogen :	The antiserum was produced against synthesized peptide derived from human IGF2R around the phosphorylation site of Ser2409. AA range:2381-2430
Specificity :	Phospho-IGF-IIR (S2409) Polyclonal Antibody detects endogenous levels of IGF-IIR protein only when phosphorylated at S2409.
Formulation :	Liquid in PBS containing 50% glycerol, 0.5% BSA and 0.02% sodium azide.
Source :	Polyclonal, Rabbit,IgG
Dilution :	WB 1:500 - 1:2000. IHC 1:100 - 1:300. ELISA: 1:10000.. IF 1:50-200
Purification :	The antibody was affinity-purified from rabbit antiserum by affinity-chromatography using epitope-specific immunogen.
Concentration :	1 mg/ml

Storage Stability : -15°C to -25°C/1 year(Do not lower than -25°C)

Observed Band : 300kD

Cell Pathway : Lysosome;

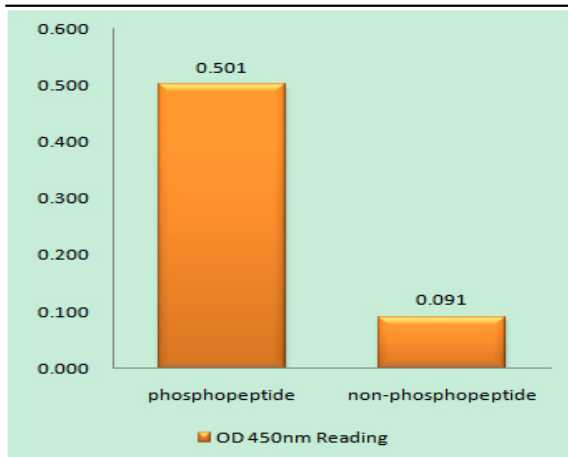
Background : This gene encodes a receptor for both insulin-like growth factor 2 and mannose 6-phosphate. The binding sites for each ligand are located on different segments of the protein. This receptor has various functions, including in the intracellular trafficking of lysosomal enzymes, the activation of transforming growth factor beta, and the degradation of insulin-like growth factor 2. Mutation or loss of heterozygosity of this gene has been association with risk of hepatocellular carcinoma. The orthologous mouse gene is imprinted and shows exclusive expression from the maternal allele; however, imprinting of the human gene may be polymorphic, as only a minority of individuals showed biased expression from the maternal allele (PMID:8267611). [provided by RefSeq, Nov 2015],

Function : domain:Contains 15 repeating units of approximately 147 AA. The most highly conserved region within the repeat consists of a stretch of 13 AA that contains cysteines at both ends.,function:Transport of phosphorylated lysosomal enzymes from the Golgi complex and the cell surface to lysosomes. Lysosomal enzymes bearing phosphomannosyl residues bind specifically to mannose-6-phosphate receptors in the Golgi apparatus and the resulting receptor-ligand complex is transported to an acidic prelysosomal compartment where the low pH mediates the dissociation of the complex. This receptor also binds IGF2.,similarity:Belongs to the MRL1/IGF2R family.,similarity:Contains 1 fibronectin type-II domain.,subunit:Binds GGA1, GGA2 and GGA3.,

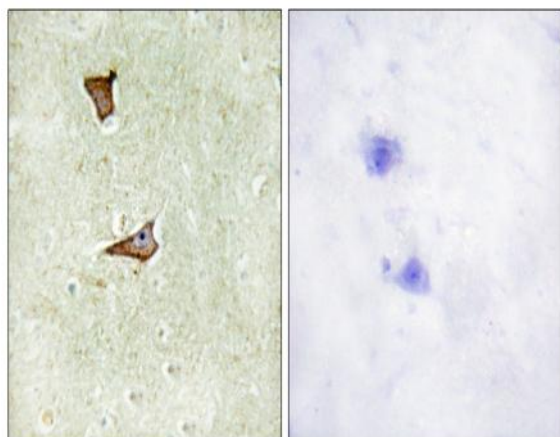
Subcellular Location : Golgi apparatus membrane ; Single-pass type I membrane protein . Endosome membrane ; Single-pass type I membrane protein . Mainly localized in the Golgi at steady state and not detectable in lysosome (PubMed:18817523). Colocalized with DPP4 in internalized cytoplasmic vesicles adjacent to the cell surface (PubMed:10900005). .

Expression : Brain,Epithelium,Liver,

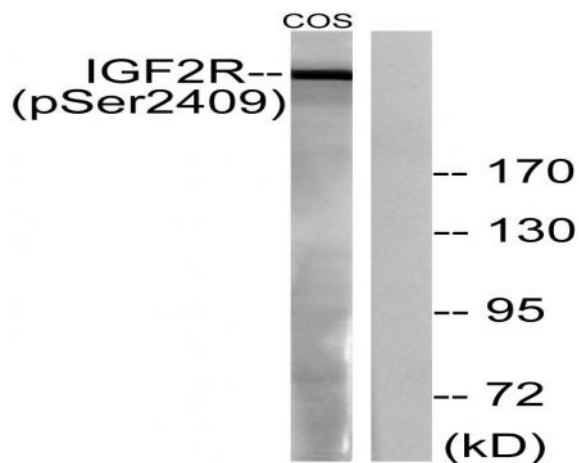
Products Images



Enzyme-Linked Immunosorbent Assay (Phospho-ELISA) for Immunogen Phosphopeptide (Phospho-left) and Non-Phosphopeptide (Phospho-right), using IGF2R (Phospho-Ser2409) Antibody



Immunohistochemistry analysis of paraffin-embedded human brain, using IGF2R (Phospho-Ser2409) Antibody. The picture on the right is blocked with the phospho peptide.



Western blot analysis of lysates from COS7 cells treated with UV 15', using IGF2R (Phospho-Ser2409) Antibody. The lane on the right is blocked with the phospho peptide.