

**JNK1/2/3 (phospho Tyr185) Polyclonal Antibody**

<b>Catalog No :</b>	YP0843
<b>Reactivity :</b>	Human;Mouse;Rat
<b>Applications :</b>	IF;WB;IHC;ELISA
<b>Target :</b>	JNK1/2/3
<b>Fields :</b>	>>Endocrine resistance;>>MAPK signaling pathway;>>ErbB signaling pathway;>>Ras signaling pathway;>>cAMP signaling pathway;>>FoxO signaling pathway;>>Sphingolipid signaling pathway;>>Mitophagy - animal;>>Autophagy - animal;>>Protein processing in endoplasmic reticulum;>>Apoptosis;>>Apoptosis - multiple species;>>Necroptosis;>>Wnt signaling pathway;>>Osteoclast differentiation;>>Focal adhesion;>>Tight junction;>>Toll-like receptor signaling pathway;>>NOD-like receptor signaling pathway;>>RIG-I-like receptor signaling pathway;>>C-type lectin receptor signaling pathway;>>IL-17 signaling pathway;>>Th1 and Th2 cell differentiation;>>Th17 cell differentiation;>>T cell receptor signaling pathway;>>Fc epsilon RI signaling pathway;>>TNF signaling pathway;>>Neurotrophin signaling pathway;>>Retrograde endocannabinoid signaling;>>Dopaminergic synapse;>>Inflammatory mediator regulation of TRP channels;>>Insulin signaling pathway;>>GnRH signaling pathway;>>Progesterone-mediated oocyte maturation;>>Pr
<b>Gene Name :</b>	MAPK8/9/10
<b>Protein Name :</b>	Mitogen-activated protein kinase 8/9/10
<b>Human Gene Id :</b>	5599/5601/5602
<b>Human Swiss Prot No :</b>	P45983/P45984/P53779
<b>Mouse Gene Id :</b>	26419/26420
<b>Rat Gene Id :</b>	116554/50658/25272
<b>Rat Swiss Prot No :</b>	P49185/P49186/P49187
<b>Immunogen :</b>	The antiserum was produced against synthesized peptide derived from human SAPK/JNK around the phosphorylation site of Tyr185. AA range:151-200

<b>Specificity :</b>	Phospho-JNK1/2/3 (Y185) Polyclonal Antibody detects endogenous levels of JNK1/2/3 protein only when phosphorylated at Y185.
<b>Formulation :</b>	Liquid in PBS containing 50% glycerol, 0.5% BSA and 0.02% sodium azide.
<b>Source :</b>	Polyclonal, Rabbit,IgG
<b>Dilution :</b>	IF 1:50-200 WB 1:500 - 1:2000. IHC 1:100 - 1:300. ELISA: 1:20000. Not yet tested in other applications.
<b>Purification :</b>	The antibody was affinity-purified from rabbit antiserum by affinity-chromatography using epitope-specific immunogen.
<b>Concentration :</b>	1 mg/ml
<b>Storage Stability :</b>	-15°C to -25°C/1 year(Do not lower than -25°C)
<b>Observed Band :</b>	46kD,54kD
<b>Cell Pathway :</b>	Toll_Like; Cell Growth; Stem cell pathway; Insulin Receptor; MAPK_ERK_Growth;MAPK_G_Protein; ErbB/HER; B Cell Receptor; SAPK_JNK; WNT;WNT-T CELL;β-Catenin
<b>Background :</b>	<p>The protein encoded by this gene is a member of the MAP kinase family. MAP kinases act as an integration point for multiple biochemical signals, and are involved in a wide variety of cellular processes such as proliferation, differentiation, transcription regulation and development. This kinase is activated by various cell stimuli, and targets specific transcription factors, and thus mediates immediate-early gene expression in response to cell stimuli. The activation of this kinase by tumor-necrosis factor alpha (TNF-alpha) is found to be required for TNF-alpha induced apoptosis. This kinase is also involved in UV radiation induced apoptosis, which is thought to be related to cytochrom c-mediated cell death pathway. Studies of the mouse counterpart of this gene suggested that this kinase play a key role in T cell proliferation, apoptosis and differentiation. Several alternatively spl</p>
<b>Function :</b>	<p>catalytic activity:ATP + a protein = ADP + a phosphoprotein.,cofactor:Magnesium.,domain:The TXY motif contains the threonine and tyrosine residues whose phosphorylation activates the MAP kinases.,enzyme regulation:Activated by threonine and tyrosine phosphorylation by either of two dual specificity kinases, MAP2K4 and MAP2K7. Inhibited by dual specificity phosphatases, such as DUSP1.,function:JNK1 isoforms display different binding patterns: beta-1 preferentially binds to c-Jun, whereas alpha-1, alpha-2, and beta-2 have a similar low level of binding to both c-Jun or ATF2. However, there is no correlation between binding and phosphorylation, which is achieved at about the same efficiency by all isoforms.,function:Responds to activation by environmental stress and pro-inflammatory cytokines by</p>

phosphorylating a number of transcription factors, primarily components of AP-1 such as JUN, JDP

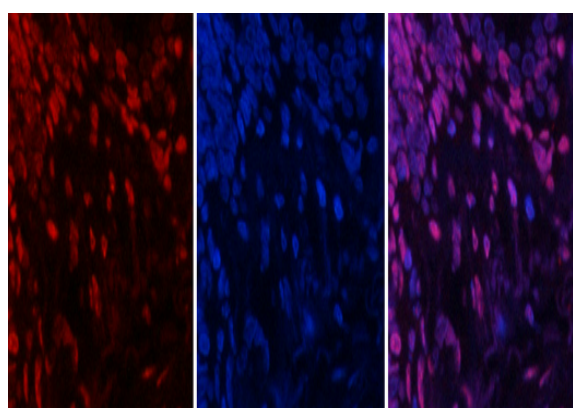
**Subcellular Location :**

Cytoplasm . Nucleus . Cell junction, synapse . In the cortical neurons, predominantly cytoplasmic and associated with the Golgi apparatus and endosomal fraction. Increased neuronal activity increases phosphorylated form at synapses (By similarity). Colocalizes with POU5F1 in the nucleus. .

**Expression :**

Brain, Epithelium, Fetal brain, Lung, Pooled, Testis,

## Products Images

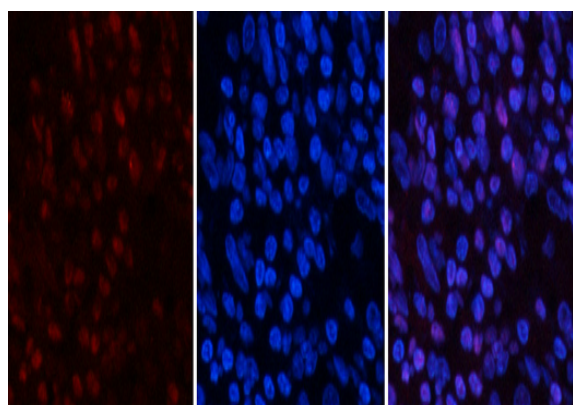


A

B

C

Immunofluorescence analysis of human-lung tissue. 1, JNK1/2/3 (phospho Tyr185) Polyclonal Antibody (red) was diluted at 1:200 (4°C, overnight). 2, Cy3 labeled Secondary antibody was diluted at 1:300 (room temperature, 50min). 3, Picture B: DAPI (blue) 10min. Picture A: Target. Picture B: DAPI. Picture C: merge of A+B

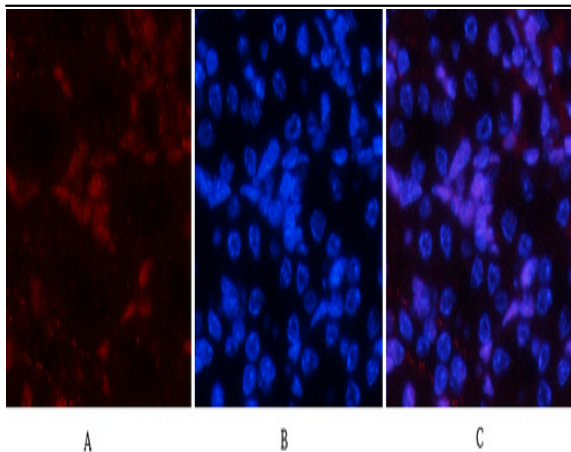


A

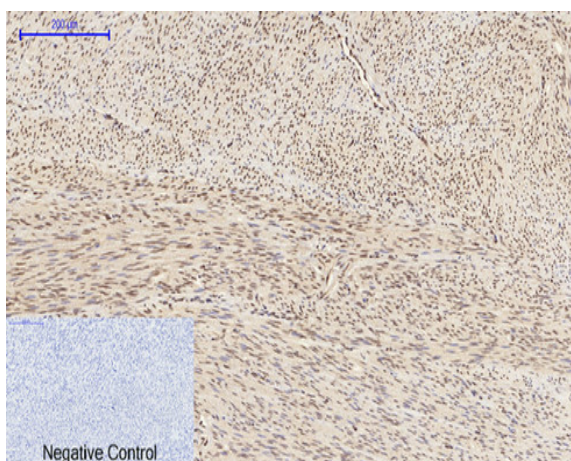
B

C

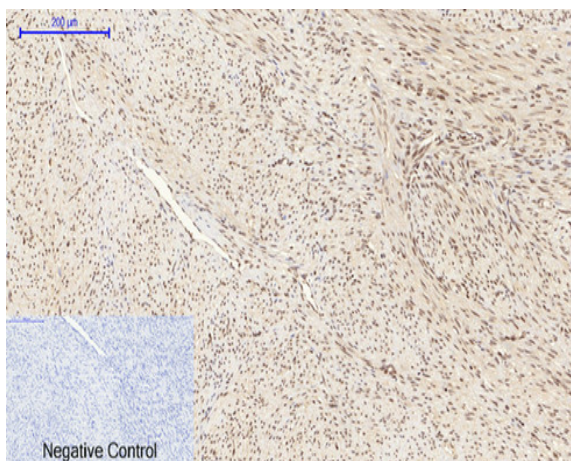
Immunofluorescence analysis of human-stomach tissue. 1, JNK1/2/3 (phospho Tyr185) Polyclonal Antibody (red) was diluted at 1:200 (4°C, overnight). 2, Cy3 labeled Secondary antibody was diluted at 1:300 (room temperature, 50min). 3, Picture B: DAPI (blue) 10min. Picture A: Target. Picture B: DAPI. Picture C: merge of A+B



Immunofluorescence analysis of mouse-kidneystomach tissue. 1, JNK1/2/3 (phospho Tyr185) Polyclonal Antibody (red) was diluted at 1:200 (4°C, overnight). 2, Cy3 labeled Secondary antibody was diluted at 1:300 (room temperature, 50min). 3, Picture B: DAPI (blue) 10min. Picture A: Target. Picture B: DAPI. Picture C: merge of A+B

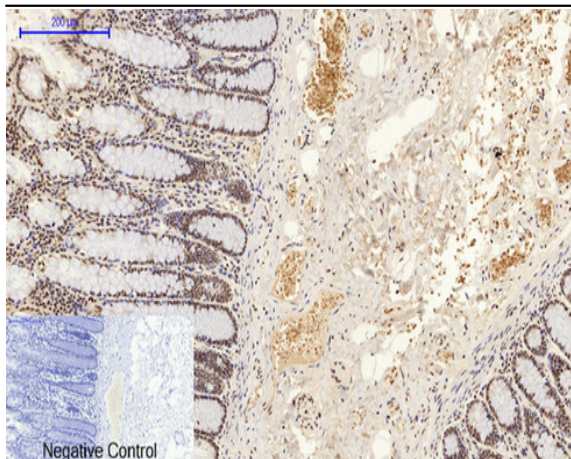


Immunohistochemical analysis of paraffin-embedded Human-uterus tissue. 1, JNK1/2/3 (phospho Tyr185) Polyclonal Antibody was diluted at 1:200 (4°C, overnight). 2, Sodium citrate pH 6.0 was used for antibody retrieval (>98°C, 20min). 3, Secondary antibody was diluted at 1:200 (room temperature, 30min). Negative control was used by secondary antibody only.

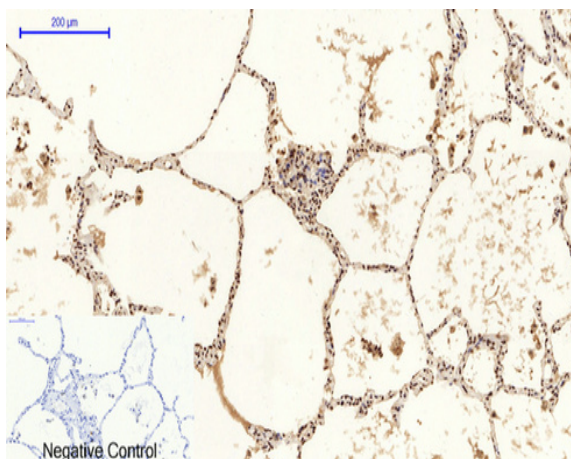


Immunohistochemical analysis of paraffin-embedded Human-uterus-cancer tissue. 1, JNK1/2/3 (phospho Tyr185) Polyclonal Antibody was diluted at 1:200 (4°C, overnight). 2, Sodium citrate pH 6.0 was used for antibody retrieval (>98°C, 20min). 3, Secondary antibody was diluted at 1:200 (room temperature, 30min). Negative control was used by secondary antibody only.

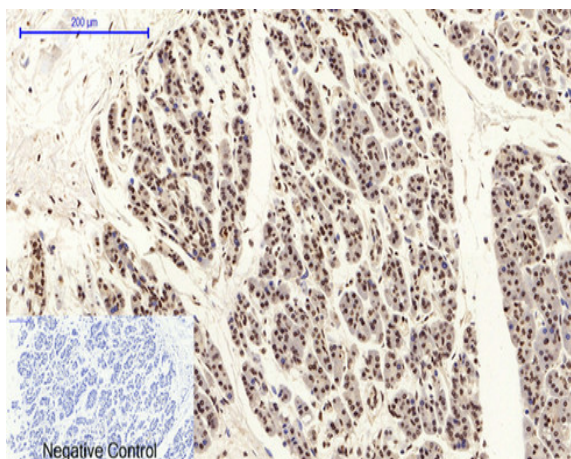




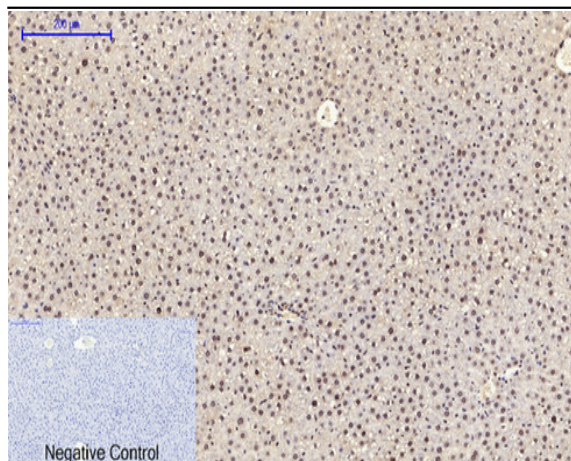
Immunohistochemical analysis of paraffin-embedded Human-colon tissue. 1, JNK1/2/3 (phospho Tyr185) Polyclonal Antibody was diluted at 1:200(4 °C, overnight). 2, Sodium citrate pH 6.0 was used for antibody retrieval(>98 °C, 20min). 3, Secondary antibody was diluted at 1:200(room temperature, 30min). Negative control was used by secondary antibody only.



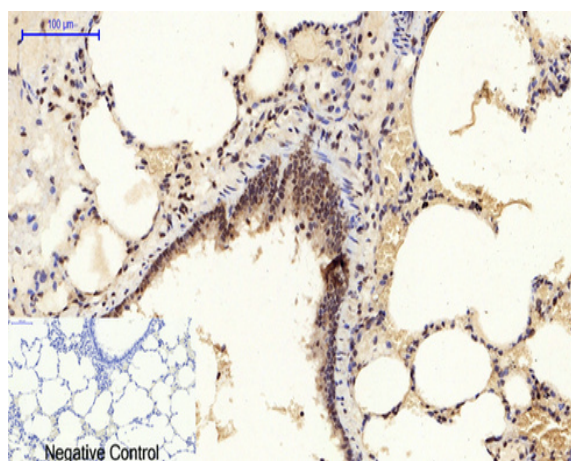
Immunohistochemical analysis of paraffin-embedded Human-lung tissue. 1, JNK1/2/3 (phospho Tyr185) Polyclonal Antibody was diluted at 1:200(4 °C, overnight). 2, Sodium citrate pH 6.0 was used for antibody retrieval(>98 °C, 20min). 3, Secondary antibody was diluted at 1:200(room temperature, 30min). Negative control was used by secondary antibody only.



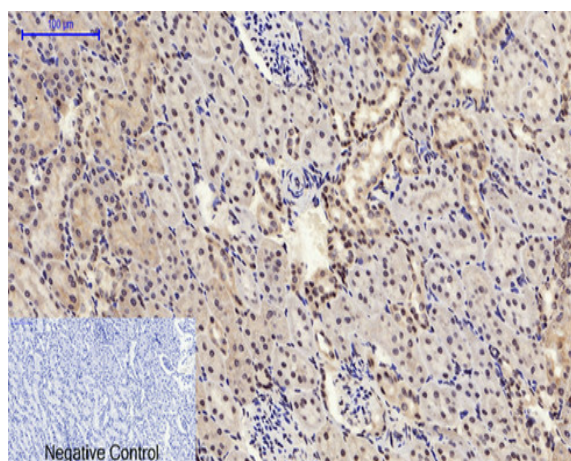
Immunohistochemical analysis of paraffin-embedded Human-stomach-cancer tissue. 1, JNK1/2/3 (phospho Tyr185) Polyclonal Antibody was diluted at 1:200(4 °C, overnight). 2, Sodium citrate pH 6.0 was used for antibody retrieval(>98 °C, 20min). 3, Secondary antibody was diluted at 1:200(room temperature, 30min). Negative control was used by secondary antibody only.



Immunohistochemical analysis of paraffin-embedded Rat-liver tissue. 1, JNK1/2/3 (phospho Tyr185) Polyclonal Antibody was diluted at 1:200(4°C, overnight). 2, Sodium citrate pH 6.0 was used for antibody retrieval(>98°C, 20min). 3, Secondary antibody was diluted at 1:200(room temperature, 30min). Negative control was used by secondary antibody only.

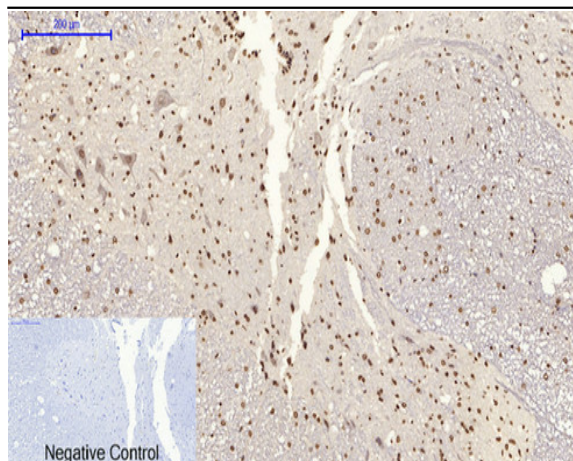


Immunohistochemical analysis of paraffin-embedded Rat-lung tissue. 1, JNK1/2/3 (phospho Tyr185) Polyclonal Antibody was diluted at 1:200(4°C, overnight). 2, Sodium citrate pH 6.0 was used for antibody retrieval(>98°C, 20min). 3, Secondary antibody was diluted at 1:200(room temperature, 30min). Negative control was used by secondary antibody only.

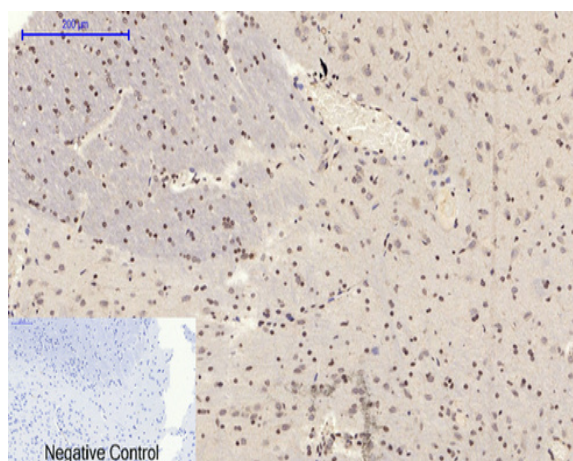


Immunohistochemical analysis of paraffin-embedded Rat-kidney tissue. 1, JNK1/2/3 (phospho Tyr185) Polyclonal Antibody was diluted at 1:200(4°C, overnight). 2, Sodium citrate pH 6.0 was used for antibody retrieval(>98°C, 20min). 3, Secondary antibody was diluted at 1:200(room temperature, 30min). Negative control was used by secondary antibody only.

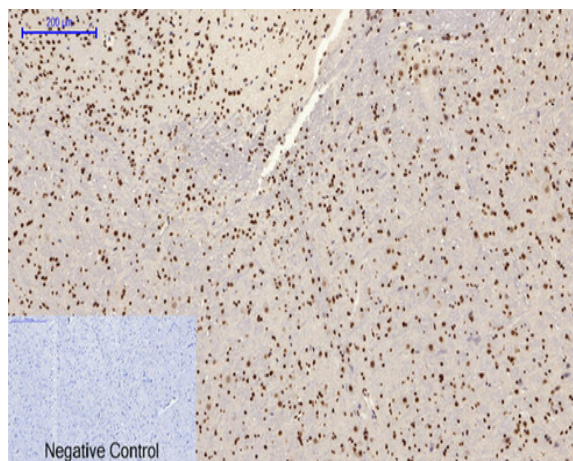




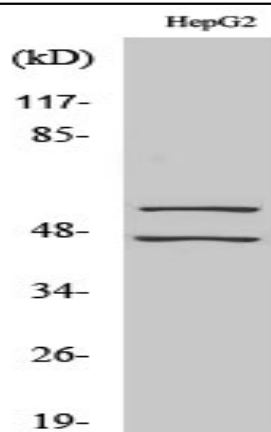
Immunohistochemical analysis of paraffin-embedded Rat-spinal-cord tissue. 1, JNK1/2/3 (phospho Tyr185) Polyclonal Antibody was diluted at 1:200(4 °C, overnight). 2, Sodium citrate pH 6.0 was used for antibody retrieval(>98 °C, 20min). 3, Secondary antibody was diluted at 1:200(room temperature, 30min). Negative control was used by secondary antibody only.



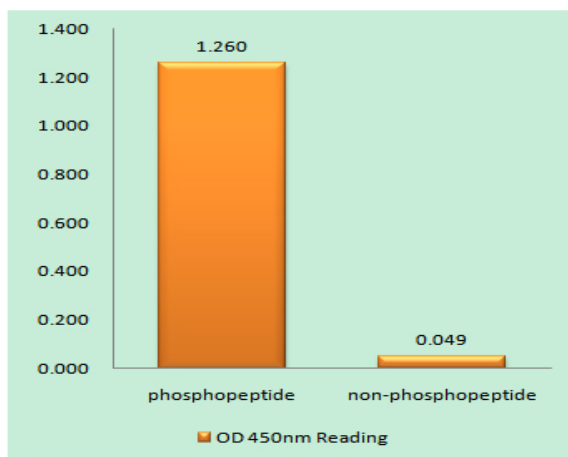
Immunohistochemical analysis of paraffin-embedded Rat-brain tissue. 1, JNK1/2/3 (phospho Tyr185) Polyclonal Antibody was diluted at 1:200(4 °C, overnight). 2, Sodium citrate pH 6.0 was used for antibody retrieval(>98 °C, 20min). 3, Secondary antibody was diluted at 1:200(room temperature, 30min). Negative control was used by secondary antibody only.



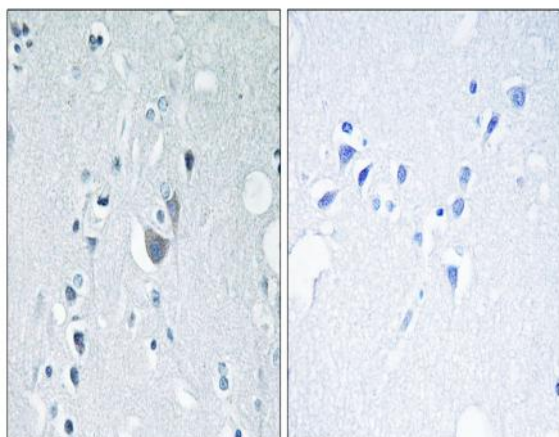
Immunohistochemical analysis of paraffin-embedded Mouse-brain tissue. 1, JNK1/2/3 (phospho Tyr185) Polyclonal Antibody was diluted at 1:200(4 °C, overnight). 2, Sodium citrate pH 6.0 was used for antibody retrieval(>98 °C, 20min). 3, Secondary antibody was diluted at 1:200(room temperature, 30min). Negative control was used by secondary antibody only.



Western Blot analysis of various cells using Phospho-JNK1/2/3 (Y185) Polyclonal Antibody

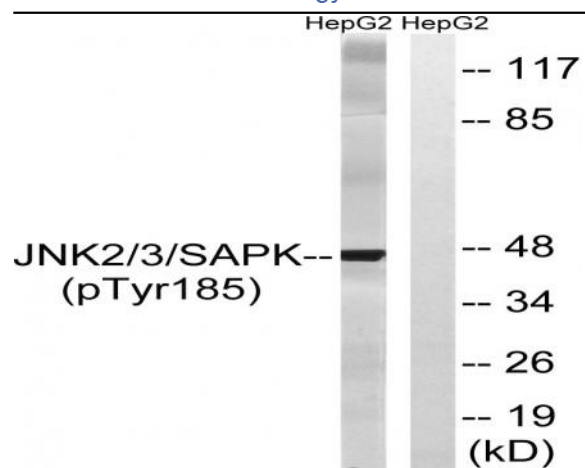


Enzyme-Linked Immunosorbent Assay (Phospho-ELISA) for Immunogen Phosphopeptide (Phospho-left) and Non-Phosphopeptide (Phospho-right), using SAPK/JNK (Phospho-Tyr185) Antibody



Immunohistochemistry analysis of paraffin-embedded human brain, using SAPK/JNK (Phospho-Tyr185) Antibody. The picture on the right is blocked with the phospho peptide.





Western blot analysis of lysates from HepG2 cells treated with nocodazole 1ug/ml 16h, using SAPK/JNK (Phospho-Tyr185) Antibody. The lane on the right is blocked with the phospho peptide.