

CSN1 (phospho Ser454) Polyclonal Antibody

Catalog No :	YP1090
Reactivity :	Human;Mouse;Rat
Applications :	IHC;IF;ELISA
Target :	CSN1
Gene Name :	GPS1
Protein Name :	COP9 signalosome complex subunit 1
Human Gene Id :	2873
Human Swiss Prot No :	Q13098
Mouse Swiss Prot No :	Q99LD4
Rat Gene Id :	117039
Rat Swiss Prot No :	P97834
Immunogen :	The antiserum was produced against synthesized peptide derived from human COPS1 around the phosphorylation site of Ser454. AA range:420-469
Specificity :	Phospho-CSN1 (S454) Polyclonal Antibody detects endogenous levels of CSN1 protein only when phosphorylated at S454.
Formulation :	Liquid in PBS containing 50% glycerol, 0.5% BSA and 0.02% sodium azide.
Source :	Polyclonal, Rabbit,IgG
Dilution :	IHC 1:100 - 1:300. ELISA: 1:5000.. IF 1:50-200
Purification :	The antibody was affinity-purified from rabbit antiserum by affinity-chromatography using epitope-specific immunogen.
Concentration :	1 mg/ml

Storage Stability : -15°C to -25°C/1 year (Do not lower than -25°C)

Molecularweight : 53kD

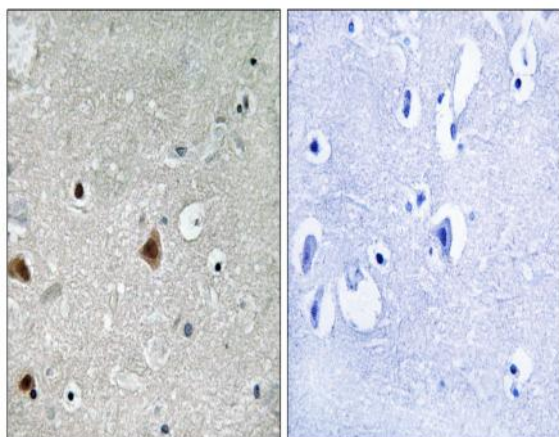
Background : This gene is known to suppress G-protein and mitogen-activated signal transduction in mammalian cells. The encoded protein shares significant similarity with Arabidopsis FUS6, which is a regulator of light-mediated signal transduction in plant cells. [provided by RefSeq, Mar 2016],

Function : domain: The N-terminal part (1-216), which is not required for deneddylating activity and CSN complex formation, is nevertheless essential for other aspects of CSN complex function, such as repression of c-fos/FOS expression., domain: The PCI domain is necessary and sufficient for the interactions with other CSN subunits of the complex. Mediates the interaction with CAPN8., function: Essential component of the COP9 signalosome complex (CSN), a complex involved in various cellular and developmental processes. The CSN complex is an essential regulator of the ubiquitin (Ubl) conjugation pathway by mediating the deneddylation of the cullin subunits of SCF-type E3 ligase complexes, leading to decrease the Ubl ligase activity of SCF-type complexes such as SCF, CSA or DDB2. The complex is also involved in phosphorylation of p53/TP53, c-jun/JUN, IκappaBα/NFKBIA, ITPK1 and IRF8/ICSBP, possibly via

Subcellular Location : Cytoplasm . Nucleus .

Expression : Widely expressed.

Products Images



Immunohistochemistry analysis of paraffin-embedded human brain, using COPS1 (Phospho-Ser454) Antibody. The picture on the right is blocked with the phospho peptide.