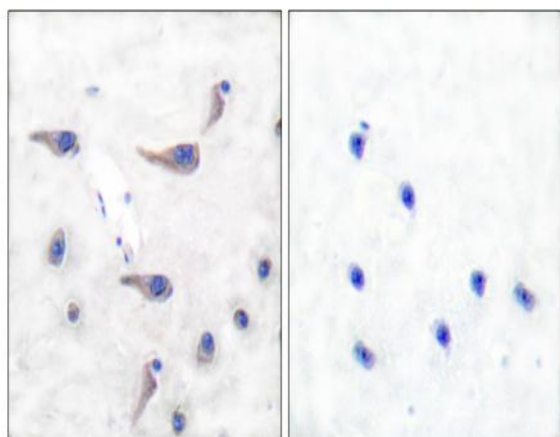


MARCKS (phospho Ser163) Polyclonal Antibody

Catalog No :	YP1127
Reactivity :	Human;Mouse;Rat
Applications :	IHC;IF;ELISA
Target :	MARCKS
Fields :	>>Fc gamma R-mediated phagocytosis;>>MicroRNAs in cancer
Gene Name :	MARCKS
Protein Name :	Myristoylated alanine-rich C-kinase substrate
Human Gene Id :	4082
Human Swiss Prot No :	P29966
Mouse Gene Id :	17118
Mouse Swiss Prot No :	P26645
Rat Swiss Prot No :	P30009
Immunogen :	The antiserum was produced against synthesized peptide derived from human MARCKS around the phosphorylation site of Ser163. AA range:136-185
Specificity :	Phospho-MARCKS (S163) Polyclonal Antibody detects endogenous levels of MARCKS protein only when phosphorylated at S163.
Formulation :	Liquid in PBS containing 50% glycerol, 0.5% BSA and 0.02% sodium azide.
Source :	Polyclonal, Rabbit,IgG
Dilution :	IHC 1:100 - 1:300. ELISA: 1:10000.. IF 1:50-200
Purification :	The antibody was affinity-purified from rabbit antiserum by affinity-chromatography using epitope-specific immunogen.

Concentration :	1 mg/ml
Storage Stability :	-15°C to -25°C/1 year(Do not lower than -25°C)
Molecularweight :	32kD
Cell Pathway :	Fc gamma R-mediated phagocytosis;
Background :	The protein encoded by this gene is a substrate for protein kinase C. It is localized to the plasma membrane and is an actin filament crosslinking protein. Phosphorylation by protein kinase C or binding to calcium-calmodulin inhibits its association with actin and with the plasma membrane, leading to its presence in the cytoplasm. The protein is thought to be involved in cell motility, phagocytosis, membrane trafficking and mitogenesis. [provided by RefSeq, Jul 2008],
Function :	function:MARCKS is the most prominent cellular substrate for protein kinase C. This protein binds calmodulin, actin, and synapsin. MARCKS is a filamentous (F) actin cross-linking protein.,PTM:Phosphorylation by PKC displaces MARCKS from the membrane. It also inhibits the F-actin cross-linking activity.,similarity:Belongs to the MARCKS family.,
Subcellular Location :	Cytoplasm, cytoskeleton . Membrane ; Lipid-anchor .
Expression :	Blood,Brain,Epithelium,Muscle,Skin,

Products Images



Immunohistochemistry analysis of paraffin-embedded human brain, using MARCKS (Phospho-Ser163) Antibody. The picture on the right is blocked with the phospho peptide.