

HSP20 (phospho Ser16) Polyclonal Antibody

Catalog No :	YP1130
Reactivity :	Human;Mouse;Rat
Applications :	IHC;IF;ELISA
Target :	HSP20
Gene Name :	HSPB6
Protein Name :	Heat shock protein beta-6
Human Gene Id :	126393
Human Swiss Prot No :	O14558
Mouse Gene Id :	243912
Mouse Swiss Prot No :	Q5EBG6
Rat Gene Id :	192245
Rat Swiss Prot No :	P97541
Immunogen :	The antiserum was produced against synthesized peptide derived from human HSP20 around the phosphorylation site of Ser16. AA range:5-54
Specificity :	Phospho-HSP20 (S16) Polyclonal Antibody detects endogenous levels of HSP20 protein only when phosphorylated at S16.
Formulation :	Liquid in PBS containing 50% glycerol, 0.5% BSA and 0.02% sodium azide.
Source :	Polyclonal, Rabbit,IgG
Dilution :	IHC 1:100 - 1:300. IF 1:200 - 1:1000. ELISA: 1:5000. Not yet tested in other applications.
Purification :	The antibody was affinity-purified from rabbit antiserum by affinity-

chromatography using epitope-specific immunogen.

Concentration : 1 mg/ml

Storage Stability : -15°C to -25°C/1 year(Do not lower than -25°C)

Molecularweight : 17kD

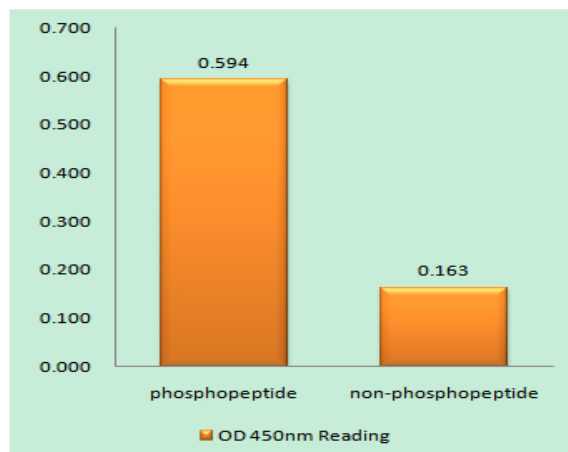
Background : This locus encodes a heat shock protein. The encoded protein likely plays a role in smooth muscle relaxation. [provided by RefSeq, Jan 2012],

Function : PTM:The N-terminus is blocked.,similarity:Belongs to the small heat shock protein (HSP20) family.,subunit:May exist as disulfide-linked dimer and monomer.,

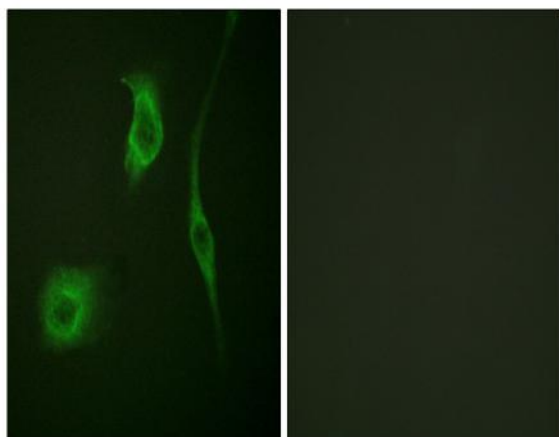
Subcellular Location : Cytoplasm . Nucleus . Secreted . Translocates to nuclear foci during heat shock.

Expression : Muscle,Skeletal muscle,Skin,

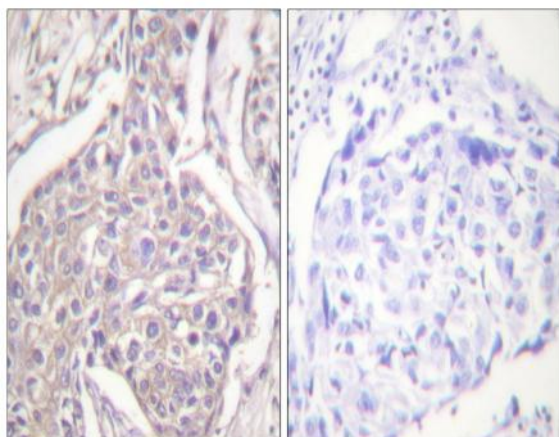
Products Images



Enzyme-Linked Immunosorbent Assay (Phospho-ELISA) for Immunogen Phosphopeptide (Phospho-left) and Non-Phosphopeptide (Phospho-right), using HSP20 (Phospho-Ser16) Antibody



Immunofluorescence analysis of HeLa cells, using HSP20 (Phospho-Ser16) Antibody. The picture on the right is blocked with the phospho peptide.



Immunohistochemistry analysis of paraffin-embedded human breast carcinoma, using HSP20 (Phospho-Ser16) Antibody. The picture on the right is blocked with the phospho peptide.