

MAP-4 (phospho Ser696) Polyclonal Antibody

Catalog No :	YP1158
Reactivity :	Human;Mouse;Rat
Applications :	IHC;IF;ELISA
Target :	MAP4
Gene Name :	MAP4
Protein Name :	Microtubule-associated protein 4
Human Gene Id :	4134
Human Swiss Prot No :	P27816
Mouse Gene Id :	17758
Mouse Swiss Prot No :	P27546
Rat Gene Id :	367171
Rat Swiss Prot No :	Q5M7W5
Immunogen :	The antiserum was produced against synthesized peptide derived from human MAP4 around the phosphorylation site of Ser696. AA range:662-711
Specificity :	Phospho-MAP-4 (S696) Polyclonal Antibody detects endogenous levels of MAP-4 protein only when phosphorylated at S696.
Formulation :	Liquid in PBS containing 50% glycerol, 0.5% BSA and 0.02% sodium azide.
Source :	Polyclonal, Rabbit,IgG
Dilution :	IHC 1:100 - 1:300. IF 1:200 - 1:1000. ELISA: 1:5000. Not yet tested in other applications.
Purification :	The antibody was affinity-purified from rabbit antiserum by affinity-

chromatography using epitope-specific immunogen.

Concentration : 1 mg/ml

Storage Stability : -15°C to -25°C/1 year(Do not lower than -25°C)

Molecularweight : 121kD

Observed Band : 121kD

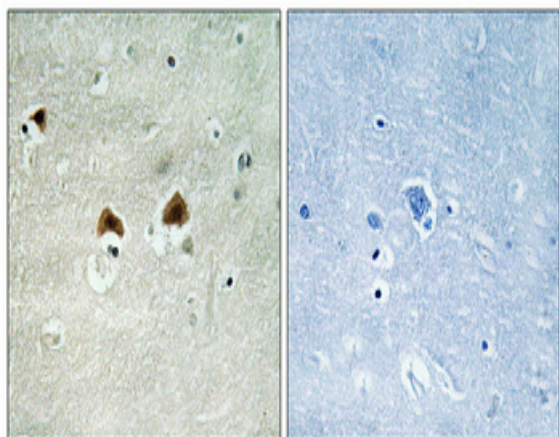
Background : The protein encoded by this gene is a major non-neuronal microtubule-associated protein. This protein contains a domain similar to the microtubule-binding domains of neuronal microtubule-associated protein (MAP2) and microtubule-associated protein tau (MAPT/TAU). This protein promotes microtubule assembly, and has been shown to counteract destabilization of interphase microtubule catastrophe promotion. Cyclin B was found to interact with this protein, which targets cell division cycle 2 (CDC2) kinase to microtubules. The phosphorylation of this protein affects microtubule properties and cell cycle progression. Multiple transcript variants encoding different isoforms have been found for this gene. [provided by RefSeq, Aug 2008],

Function : alternative products:Additional isoforms seem to exist,caution:The sequence shown here is derived from an Ensembl automatic analysis pipeline and should be considered as preliminary data.,function:Non-neuronal microtubule-associated protein. Promotes microtubule assembly.,PTM:Phosphorylated upon DNA damage, probably by ATM or ATR (By similarity). Phosphorylation on Ser-787 negatively regulates MAP4 activity to promote microtubule assembly. Isoform 3 is phosphorylated on Ser-337 and Ser-338.,similarity:Contains 3 Tau/MAP repeats.,similarity:Contains 4 Tau/MAP repeats.,

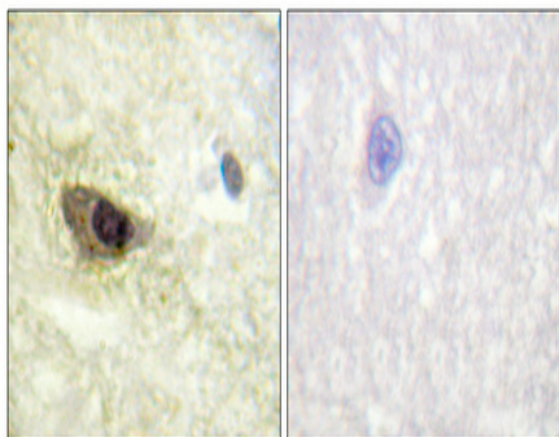
Subcellular Location : Cytoplasm, cytoskeleton . Cytoplasm, cytoskeleton, microtubule organizing center . Recruitment to microtubule is inhibited by microtubules polyglutamylation.

Expression : Bone marrow,Brain,Cerebellum,Colon carcinoma,Epithelium,Eye,Heart,Liver,Lym

Products Images



Immunohistochemical analysis of paraffin-embedded Human brain. Antibody was diluted at 1:100(4° overnight). High-pressure and temperature Tris-EDTA,pH8.0 was used for antigen retrieval. Negative contrl (right) obtaned from antibody was pre-absorbed by immunogen peptide.



Immunohistochemical analysis of paraffin-embedded Human brain. Antibody was diluted at 1:100(4° overnight). High-pressure and temperature Tris-EDTA,pH8.0 was used for antigen retrieval. Negative contrl (right) obtaned from antibody was pre-absorbed by immunogen peptide.