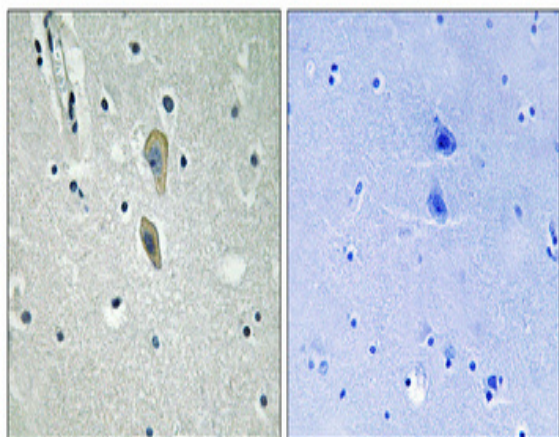


IL-1RI (phospho Tyr496) Polyclonal Antibody

Catalog No :	YP1002
Reactivity :	Human;Mouse;Rat
Applications :	WB;IHC;IF;ELISA
Target :	IL-1RI
Fields :	>>MAPK signaling pathway;>>Cytokine-cytokine receptor interaction;>>NF-kappa B signaling pathway;>>Osteoclast differentiation;>>Hematopoietic cell lineage;>>Th17 cell differentiation;>>Inflammatory mediator regulation of TRP channels;>>Pathogenic Escherichia coli infection;>>Shigellosis;>>Amoebiasis;>>Human cytomegalovirus infection;>>Human T-cell leukemia virus 1 infection;>>Fluid shear stress and atherosclerosis
Gene Name :	IL1R1
Protein Name :	Interleukin-1 receptor type 1
Human Gene Id :	3554
Human Swiss Prot No :	P14778
Mouse Gene Id :	16177
Mouse Swiss Prot No :	P13504
Rat Swiss Prot No :	Q02955
Immunogen :	The antiserum was produced against synthesized peptide derived from human IL-1Ralpha/CD121alpha around the phosphorylation site of Tyr496. AA range:471-520
Specificity :	Phospho-IL-1RI (Y496) Polyclonal Antibody detects endogenous levels of IL-1RI protein only when phosphorylated at Y496.
Formulation :	Liquid in PBS containing 50% glycerol, 0.5% BSA and 0.02% sodium azide.

Source :	Polyclonal, Rabbit,IgG
Dilution :	WB 1:500 - 1:2000. IHC 1:100 - 1:300. ELISA: 1:10000.. IF 1:50-200
Purification :	The antibody was affinity-purified from rabbit antiserum by affinity-chromatography using epitope-specific immunogen.
Concentration :	1 mg/ml
Storage Stability :	-15°C to -25°C/1 year(Do not lower than -25°C)
Observed Band :	65kD
Cell Pathway :	MAPK_ERK_Growth;MAPK_G_Protein;Cytokine-cytokine receptor interaction;Apopptosis_Inhibition;Apoptosis_Mitochondrial;Apoptosis_Overview;Hematopoietic cell lineage;
Background :	This gene encodes a cytokine receptor that belongs to the interleukin-1 receptor family. The encoded protein is a receptor for interleukin-1 alpha, interleukin-1 beta, and interleukin-1 receptor antagonist. It is an important mediator involved in many cytokine-induced immune and inflammatory responses. This gene is located in a cluster of related cytokine receptor genes on chromosome 2q12. [provided by RefSeq, Dec 2013],
Function :	function:Receptor for interleukin-1 alpha (IL-1A), beta (IL-1B), and interleukin-1 receptor antagonist protein (IL-1RA). Binding to the agonist leads to the activation of NF-kappa-B. Signaling involves formation of a ternary complex containing IL1RAP, TOLLIP, MYD88, and IRAK1 or IRAK2.,similarity:Belongs to the interleukin-1 receptor family.,similarity:Contains 1 TIR domain.,similarity:Contains 3 Ig-like C2-type (immunoglobulin-like) domains.,subunit:Binds IL1RAP.,
Subcellular Location :	Membrane ; Single-pass type I membrane protein . Cell membrane . Secreted .
Expression :	Expressed in T-helper cell subsets. Preferentially expressed in T-helper 1 (Th1) cells.

Products Images



Immunohistochemical analysis of paraffin-embedded Human brain. Antibody was diluted at 1:100(4° overnight). High-pressure and temperature Tris-EDTA,pH8.0 was used for antigen retrieval. Negative control (right) obtained from antibody was pre-absorbed by immunogen peptide.