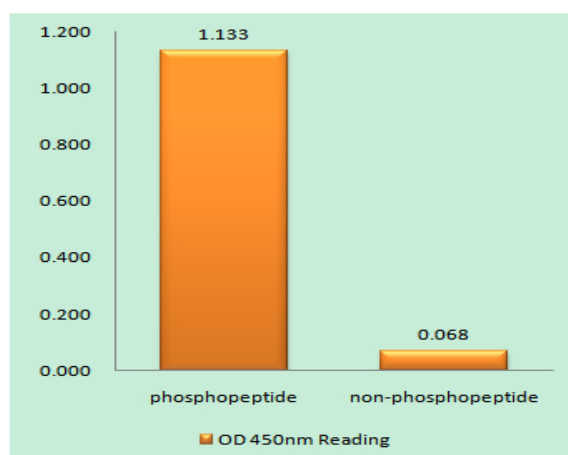


Oct-1 (phospho Ser385) Polyclonal Antibody

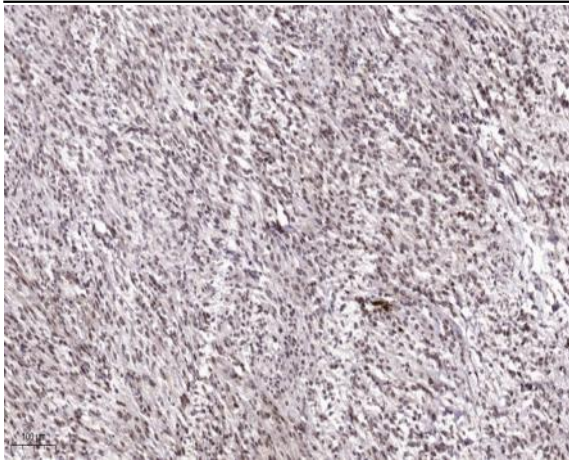
Catalog No :	YP1021
Reactivity :	Human;Mouse;Rat
Applications :	IHC;IF;ELISA
Target :	OCT1
Fields :	>>Herpes simplex virus 1 infection;>>Lipid and atherosclerosis
Gene Name :	POU2F1
Protein Name :	POU domain class 2 transcription factor
Human Gene Id :	5451/5452
Human Swiss Prot No :	P14859/P09086
Mouse Gene Id :	18986/18987
Rat Gene Id :	171068
Rat Swiss Prot No :	P31503
Immunogen :	The antiserum was produced against synthesized peptide derived from human POU2F1/OCT1 around the phosphorylation site of Ser385. AA range:361-410
Specificity :	Phospho-Oct-1 (S385) Polyclonal Antibody detects endogenous levels of 41183 protein only when phosphorylated at S385.
Formulation :	Liquid in PBS containing 50% glycerol, 0.5% BSA and 0.02% sodium azide.
Source :	Polyclonal, Rabbit,IgG
Dilution :	IHC 1:100 - 1:300. ELISA: 1:20000.. IF 1:50-200
Purification :	The antibody was affinity-purified from rabbit antiserum by affinity-chromatography using epitope-specific immunogen.

Concentration :	1 mg/ml
Storage Stability :	-15°C to -25°C/1 year(Do not lower than -25°C)
Molecularweight :	76kD
Background :	The OCT1 transcription factor was among the first identified members of the POU transcription factor family (summarized by Sturm et al., 1993 [PubMed 8314572]). Members of this family contain the POU domain, a 160-amino acid region necessary for DNA binding to the octameric sequence ATGCAAAT.[supplied by OMIM, Jul 2010],
Function :	function:Transcription factor that binds to the octamer motif (5'-ATTTGCAT-3') and activates the promoters of the genes for some small nuclear RNAs (snRNA) and of genes such as those for histone H2B and immunoglobulins. Modulates transcription transactivation by NR3C1, AR and PGR.,PTM:Phosphorylated by PRKDC.,similarity:Belongs to the POU transcription factor family. Class-2 subfamily.,similarity:Contains 1 homeobox DNA-binding domain.,similarity:Contains 1 POU-specific domain.,subunit:Interacts with NR3C1, AR, PGR and HCFC1.,tissue specificity:Ubiquitous. Isoform 2 is lymphocyte-specific.,
Subcellular Location :	Nucleus.
Expression :	Ubiquitous. Isoform 2 is lymphocyte-specific.

Products Images



Enzyme-Linked Immunosorbent Assay (Phospho-ELISA) for Immunogen Phosphopeptide (Phospho-left) and Non-Phosphopeptide (Phospho-right), using POU2F1/OCT1 (Phospho-Ser385) Antibody



Immunohistochemical analysis of paraffin-embedded human Colon cancer. 1, Antibody was diluted at 1:200(4° overnight). 2, Tris-EDTA,pH9.0 was used for antigen retrieval. 3,Secondary antibody was diluted at 1:200(room temperature, 45min).