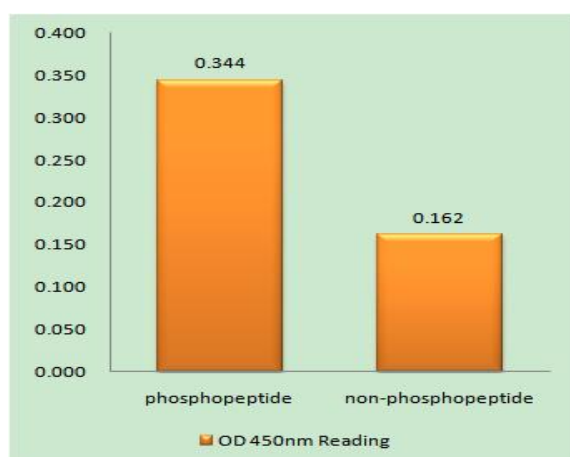


APC1 (phospho Ser355) Polyclonal Antibody

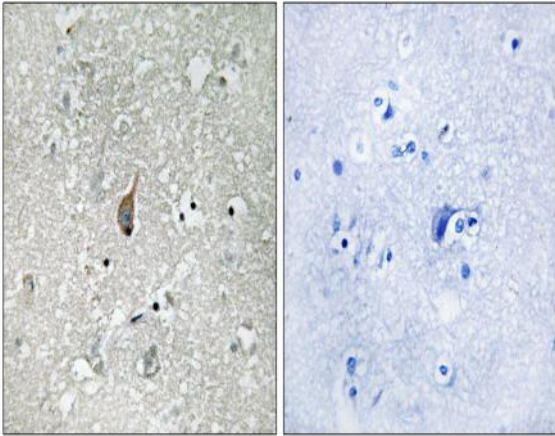
Catalog No :	YP1068
Reactivity :	Human;Mouse
Applications :	IHC;IF;ELISA
Target :	APC1
Fields :	>>Cell cycle;>>Oocyte meiosis;>>Ubiquitin mediated proteolysis;>>Progesterone-mediated oocyte maturation;>>Human T-cell leukemia virus 1 infection
Gene Name :	ANAPC1
Protein Name :	Anaphase-promoting complex subunit 1
Human Gene Id :	64682
Human Swiss Prot No :	Q9H1A4
Mouse Gene Id :	17222
Mouse Swiss Prot No :	P53995
Immunogen :	The antiserum was produced against synthesized peptide derived from human APC1 around the phosphorylation site of Ser355. AA range:321-370
Specificity :	Phospho-APC1 (S355) Polyclonal Antibody detects endogenous levels of APC1 protein only when phosphorylated at S355.
Formulation :	Liquid in PBS containing 50% glycerol, 0.5% BSA and 0.02% sodium azide.
Source :	Polyclonal, Rabbit,IgG
Dilution :	IHC 1:100 - 1:300. ELISA: 1:5000.. IF 1:50-200
Purification :	The antibody was affinity-purified from rabbit antiserum by affinity-chromatography using epitope-specific immunogen.

Concentration :	1 mg/ml
Storage Stability :	-15°C to -25°C/1 year(Do not lower than -25°C)
Molecularweight :	217kD
Cell Pathway :	Cell_Cycle_G1S;Cell_Cycle_G2M_DNA;Oocyte meiosis;Ubiquitin mediated proteolysis;Progesterone-mediated oocyte maturation;
Background :	This gene encodes a subunit of the anaphase-promoting complex. This complex is an E3 ubiquitin ligase that regulates progression through the metaphase to anaphase portion of the cell cycle by ubiquitinating proteins which targets them for degradation. [provided by RefSeq, Dec 2011],
Function :	function:Component of the anaphase promoting complex/cyclosome (APC/C), a cell cycle-regulated E3 ubiquitin ligase that controls progression through mitosis and the G1 phase of the cell cycle.,pathway:Protein modification; protein ubiquitination.,PTM:Phosphorylated. Phosphorylation on Ser-355 occurs specifically during mitosis.,similarity:Belongs to the APC1 family.,similarity:Contains 4 PC repeats.,subunit:The APC/C is composed of at least 11 subunits.,
Subcellular Location :	nucleoplasm,anaphase-promoting complex,cytosol,
Expression :	Colon,Epithelium,Ovary,Placenta,

Products Images



Enzyme-Linked Immunosorbent Assay (Phospho-ELISA) for Immunogen Phosphopeptide (Phospho-left) and Non-Phosphopeptide (Phospho-right), using APC1 (Phospho-Ser355) Antibody



Immunohistochemistry analysis of paraffin-embedded human brain, using APC1 (Phospho-Ser355) Antibody. The picture on the right is blocked with the phospho peptide.