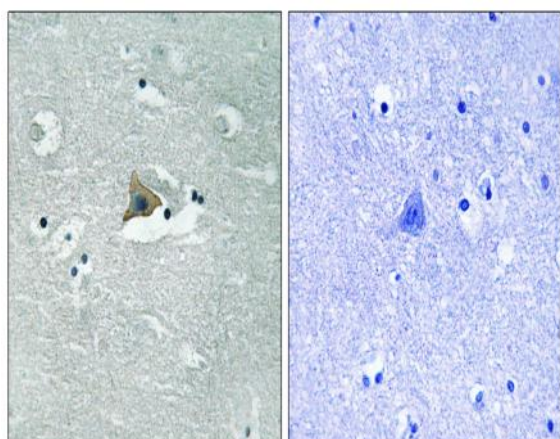


**Claudin-5 (phospho Tyr217) Polyclonal Antibody**

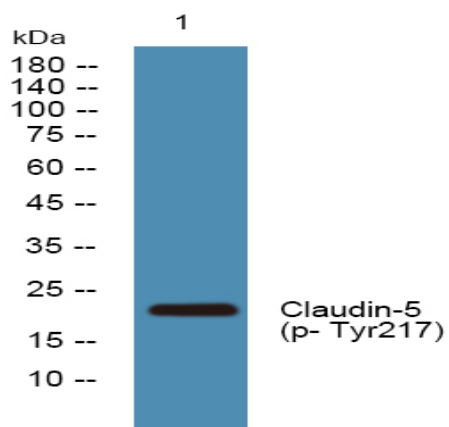
|                              |   |
|------------------------------|---|
| <b>Catalog No :</b>          | YP1089  |
| <b>Reactivity :</b>          | Human;Mouse;Rat   |
| <b>Applications :</b>        | IHC;IF;WB;ELISA   |
| <b>Target :</b>              | Claudin-5   |
| <b>Fields :</b>              | >>Cell adhesion molecules;>>Tight junction;>>Leukocyte transendothelial migration;>>Pathogenic Escherichia coli infection;>>Hepatitis C         |
| <b>Gene Name :</b>           | CLDN5   |
| <b>Protein Name :</b>        | Claudin-5   |
| <b>Human Gene Id :</b>       | 7122  |
| <b>Human Swiss Prot No :</b> | O00501  |
| <b>Mouse Gene Id :</b>       | 12741   |
| <b>Mouse Swiss Prot No :</b> | O54942  |
| <b>Rat Gene Id :</b>         | 65131   |
| <b>Rat Swiss Prot No :</b>   | Q9JKD6  |
| <b>Immunogen :</b>           | The antiserum was produced against synthesized peptide derived from human Claudin 5 around the phosphorylation site of Tyr217. AA range:169-218 |
| <b>Specificity :</b>         | Phospho-Claudin-5 (Y217) Polyclonal Antibody detects endogenous levels of Claudin-5 protein only when phosphorylated at Y217.                   |
| <b>Formulation :</b>         | Liquid in PBS containing 50% glycerol, 0.5% BSA and 0.02% sodium azide.   |
| <b>Source :</b>              | Polyclonal, Rabbit,IgG  |
| <b>Dilution :</b>            | WB 1:500-2000 IHC 1:100 - 1:300. ELISA: 1:5000.. IF 1:50-200  |

|                               |   |
|-------------------------------|---|
| <b>Purification :</b>         | The antibody was affinity-purified from rabbit antiserum by affinity-chromatography using epitope-specific immunogen.   |
| <b>Concentration :</b>        | 1 mg/ml   |
| <b>Storage Stability :</b>    | -15°C to -25°C/1 year(Do not lower than -25°C)  |
| <b>Observed Band :</b>        | 23kD  |
| <b>Cell Pathway :</b>         | Cell adhesion molecules (CAMs);Tight junction;Leukocyte transendothelial migration;   |
| <b>Background :</b>           | This gene encodes a member of the claudin family. Claudins are integral membrane proteins and components of tight junction strands. Tight junction strands serve as a physical barrier to prevent solutes and water from passing freely through the paracellular space between epithelial or endothelial cell sheets. Mutations in this gene have been found in patients with velocardiofacial syndrome. Alternatively spliced transcript variants encoding the same protein have been found for this gene. [provided by RefSeq, Aug 2008], |
| <b>Function :</b>             | function:Plays a major role in tight junction-specific obliteration of the intercellular space.,similarity:Belongs to the claudin family.,subunit:Directly interacts with TJP1/ZO-1, TJP2/ZO-2 and TJP3/ZO-3. Interacts with MPDZ.,   |
| <b>Subcellular Location :</b> | Cell junction, tight junction. Cell membrane; Multi-pass membrane protein.  |
| <b>Expression :</b>           | Adipose tissue,Brain,Lung,Prostate,   |

## Products Images



Immunohistochemistry analysis of paraffin-embedded human brain, using Claudin 5 (Phospho-Tyr217) Antibody. The picture on the right is blocked with the phospho peptide.



Western blot analysis of lysates from HCT116 cells, primary antibody was diluted at 1:1000, 4° over night