

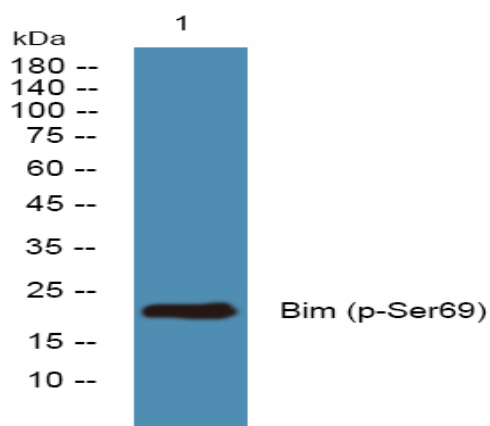
Bim (Phospho Ser69) rabbit pAb

Catalog No :	YP1276
Reactivity :	Human;Mouse
Applications :	WB
Target :	Bim
Fields :	>>EGFR tyrosine kinase inhibitor resistance;>>FoxO signaling pathway;>>PI3K-Akt signaling pathway;>>Apoptosis;>>Apoptosis - multiple species;>>Non-alcoholic fatty liver disease;>>Epstein-Barr virus infection;>>Pathways in cancer;>>MicroRNAs in cancer;>>Colorectal cancer
Gene Name :	BCL2L11 BIM
Protein Name :	Bim (Ser69)
Human Gene Id :	10018
Human Swiss Prot No :	O43521
Mouse Gene Id :	12125
Mouse Swiss Prot No :	O54918
Rat Gene Id :	64547
Rat Swiss Prot No :	O88498
Immunogen :	Synthesized phospho peptide around human Bim (Ser69)
Specificity :	This antibody detects endogenous levels of Human Mouse Bim (phospho-Ser69)
Formulation :	Liquid in PBS containing 50% glycerol, 0.5% BSA and 0.02% sodium azide.
Source :	Polyclonal, Rabbit,IgG

Dilution :	WB 1:1000-2000
Purification :	The antibody was affinity-purified from rabbit serum by affinity-chromatography using specific immunogen.
Concentration :	1 mg/ml
Storage Stability :	-15°C to -25°C/1 year(Do not lower than -25°C)
Observed Band :	22kD
Cell Pathway :	Stem cell pathway; PI3K/Akt
Background :	<p>The protein encoded by this gene belongs to the BCL-2 protein family. BCL-2 family members form hetero- or homodimers and act as anti- or pro-apoptotic regulators that are involved in a wide variety of cellular activities. The protein encoded by this gene contains a Bcl-2 homology domain 3 (BH3). It has been shown to interact with other members of the BCL-2 protein family and to act as an apoptotic activator. The expression of this gene can be induced by nerve growth factor (NGF), as well as by the forkhead transcription factor FKHR-L1, which suggests a role of this gene in neuronal and lymphocyte apoptosis. Transgenic studies of the mouse counterpart suggested that this gene functions as an essential initiator of apoptosis in thymocyte-negative selection. Several alternatively spliced transcript variants of this gene have been identified. [provided by RefSeq, Jun 2013],</p>
Function :	<p>domain:The BH3 motif is required for Bcl-2 binding and cytotoxicity.,function:Induces apoptosis. Isoform BimL is more potent than isoform BimEL. Isoform Bim-alpha1, isoform Bim-alpha2 and isoform Bim-alpha3 induce apoptosis, although less potent than the isoforms BimEL, BimL and BimS. Isoform Bim-gamma induces apoptosis.,similarity:Belongs to the Bcl-2 family.,subcellular location:Associated with intracytoplasmic membranes.,subunit:Forms heterodimers with a number of antiapoptotic Bcl-2 proteins including MCL1, BCL2, BCL2L1 isoform Bcl-X(L), BCL2A1/BFL-1, and BHRF1. Does not heterodimerize with proapoptotic proteins such as BAD, BOK, BAX or BAK.,tissue specificity:Isoform BimEL, isoform BimL and isoform BimS are the predominant isoforms and are ubiquitously expressed with a tissue-specific variation. Isoform Bim-gamma is most abundantly expressed in small intestine and colon, and in lowe</p>
Subcellular Location :	<p>Endomembrane system ; Peripheral membrane protein . Associated with intracytoplasmic membranes. .; [Isoform BimEL]: Mitochondrion. Translocates from microtubules to mitochondria on loss of cell adherence.; [Isoform BimL]: Mitochondrion.; [Isoform BimS]: Mitochondrion.; [Isoform Bim-alpha1]: Mitochondrion.</p>
Expression :	Isoform BimEL, isoform BimL and isoform BimS are the predominant isoforms

and are widely expressed with tissue-specific variation. Isoform Bim-gamma is most abundantly expressed in small intestine and colon, and in lower levels in spleen, prostate, testis, heart, liver and kidney.

Products Images



Western blot analysis of lysates from U2OS cells, primary antibody was diluted at 1:1000, 4° over night