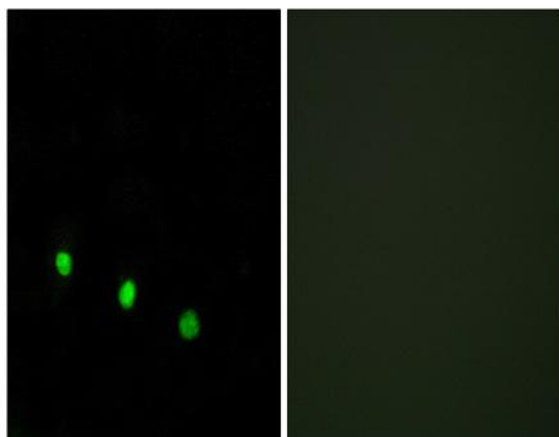


Fos B (phospho Ser27) Polyclonal Antibody

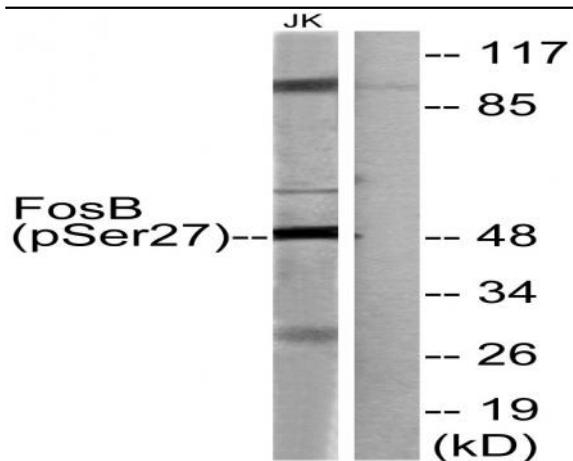
Catalog No :	YP1178
Reactivity :	Human;Mouse
Applications :	WB;IHC;IF;ELISA
Target :	Fos B
Fields :	>>Osteoclast differentiation;>>IL-17 signaling pathway;>>Cocaine addiction;>>Amphetamine addiction;>>Alcoholism
Gene Name :	FOSB
Protein Name :	Protein fosB
Human Gene Id :	2354
Human Swiss Prot No :	P53539
Mouse Gene Id :	14282
Mouse Swiss Prot No :	P13346
Immunogen :	The antiserum was produced against synthesized peptide derived from human FosB around the phosphorylation site of Ser27. AA range:12-61
Specificity :	Phospho-Fos B (S27) Polyclonal Antibody detects endogenous levels of Fos B protein only when phosphorylated at S27.
Formulation :	Liquid in PBS containing 50% glycerol, 0.5% BSA and 0.02% sodium azide.
Source :	Polyclonal, Rabbit,IgG
Dilution :	WB 1:500 - 1:2000. IHC 1:100 - 1:300. IF 1:200 - 1:1000. ELISA: 1:5000. Not yet tested in other applications.
Purification :	The antibody was affinity-purified from rabbit antiserum by affinity-chromatography using epitope-specific immunogen.

Concentration :	1 mg/ml
Storage Stability :	-15°C to -25°C/1 year(Do not lower than -25°C)
Observed Band :	35kD
Background :	The Fos gene family consists of 4 members: FOS, FOSB, FOSL1, and FOSL2. These genes encode leucine zipper proteins that can dimerize with proteins of the JUN family, thereby forming the transcription factor complex AP-1. As such, the FOS proteins have been implicated as regulators of cell proliferation, differentiation, and transformation. Alternatively spliced transcript variants encoding different isoforms have been found for this gene. [provided by RefSeq, Jul 2008],
Function :	function:FosB interacts with Jun proteins enhancing their DNA binding activity.,similarity:Belongs to the bZIP family.,similarity:Belongs to the bZIP family. Fos subfamily.,similarity:Contains 1 bZIP domain.,subunit:Heterodimer.,
Subcellular Location :	Nucleus .
Expression :	[Isoform 11]: Expressed in the nucleus accumbens of the striatum (at protein level).

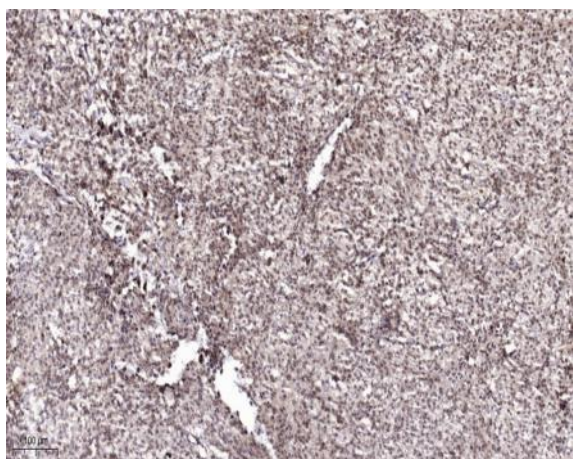
Products Images



Immunofluorescence analysis of HUVEC cells treated with EGF 200nM 5', using FosB (Phospho-Ser27) Antibody. The picture on the right is blocked with the phospho peptide.



Western blot analysis of FosB (Phospho-Ser27) Antibody. The lane on the right is blocked with the FosB (Phospho-Ser27) peptide.



Immunohistochemical analysis of paraffin-embedded human Colon cancer. 1, Antibody was diluted at 1:200(4° overnight). 2, Tris-EDTA,pH9.0 was used for antigen retrieval. 3,Secondary antibody was diluted at 1:200(room temperature, 45min).