

EpCAM (PT0290R) PT® Rabbit mAb

Catalog No :	YM8166
Reactivity :	Human; Mouse; Rat;
Applications :	WB;IHC;IF;IP;ELISA
Protein Name :	EPCAM
Sequence :	Epithelial cell adhesion molecule
Human Gene Id :	4072
Human Swiss Prot No :	P16422
Mouse Gene Id :	17075
Mouse Swiss Prot No :	Q99JW5
Specificity :	endogenous
Formulation :	PBS, 50% glycerol, 0.05% Proclin 300, 0.05%BSA
Source :	Monoclonal, rabbit, IgG, Kappa
Dilution :	IHC 1:200-1:1000,WB 1:1000-1:5000,IF 1:200-1:1000,ELISA 1:5000-1:20000,IP 1:50-1:200,
Purification :	Protein A
Storage Stability :	-15°C to -25°C/1 year(Do not lower than -25°C)
Molecularweight :	35kD
Observed Band :	40kD
Background :	This gene encodes a carcinoma-associated antigen and is a member of a family that includes at least two type I membrane proteins. This antigen is expressed on most normal epithelial cells and gastrointestinal carcinomas and functions as a

homotypic calcium-independent cell adhesion molecule. The antigen is being used as a target for immunotherapy treatment of human carcinomas. Mutations in this gene result in congenital tufting enteropathy. [provided by RefSeq, Dec 2008],

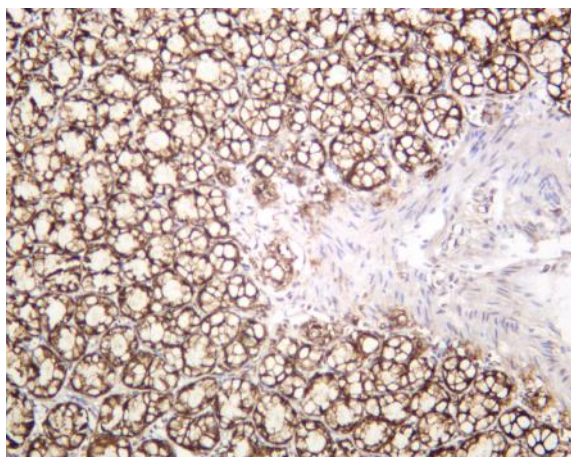
Subcellular Location :

Membrane

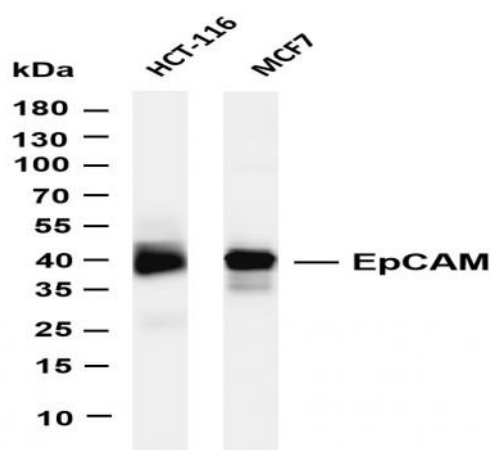
Expression :

Highly and selectively expressed by undifferentiated rather than differentiated embryonic stem cells (ESC). Levels rapidly diminish as soon as ESC's differentiate (at protein levels). Expressed in almost all epithelial cell membranes but not on mesodermal or neural cell membranes. Found on the surface of adenocarcinoma.

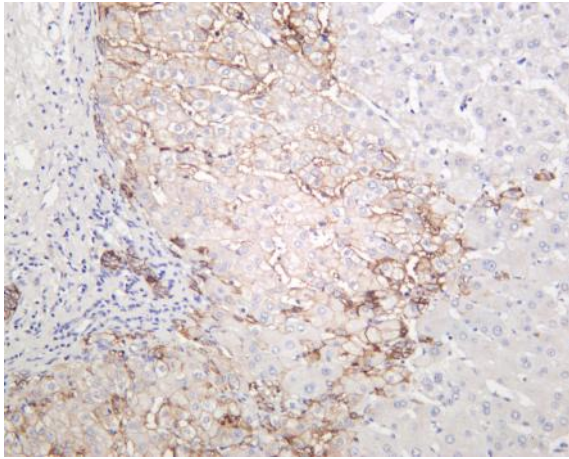
Products Images



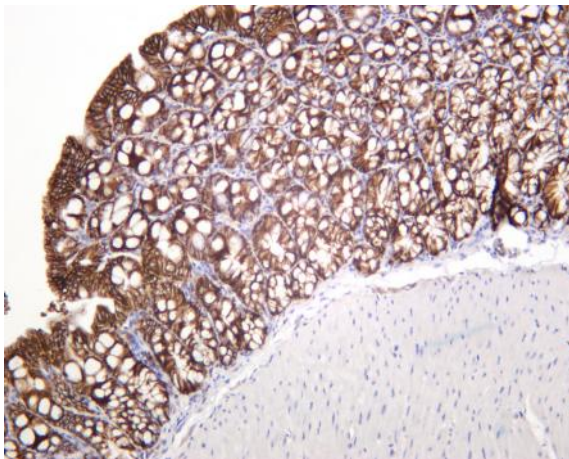
Rat colon was stained with anti-EpCAM (PT0290R) rabbit antibody



Various whole cell lysates were separated by 4-20% SDS-PAGE, and the membrane was blotted with anti-EpCAM (PT0290R) antibody. The HRP-conjugated Goat anti-Rabbit IgG(H + L) antibody was used to detect the antibody. Lane 1: HCT-116 Lane 2: MCF7 Predicted band size: 35kDa Observed band size: 40kDa



Human liver was stained with anti-EpCAM (PT0290R) rabbit antibody



Mouse colon was stained with anti-EpCAM (PT0290R) rabbit antibody