

Rictor (Phospho Thr1135) rabbit pAb

Catalog No :	YP1466
Reactivity :	Human;Mouse
Applications :	WB;IHC
Target :	Rictor
Fields :	>>mTOR signaling pathway
Gene Name :	RICTOR KIAA1999
Protein Name :	Rictor (Thr1135)
Human Gene Id :	253260
Human Swiss Prot No :	Q6R327
Mouse Gene Id :	78757
Mouse Swiss Prot No :	Q6QI06
Immunogen :	Synthesized phospho peptide around human Rictor (Thr1135)
Specificity :	This antibody detects endogenous levels of Human Mouse Rictor (phospho-Thr1135)
Formulation :	Liquid in PBS containing 50% glycerol, 0.5% BSA and 0.02% sodium azide.
Source :	Polyclonal, Rabbit,IgG
Dilution :	WB 1:500-2000;IHC 1:50-300
Purification :	The antibody was affinity-purified from rabbit serum by affinity-chromatography using specific immunogen.
Concentration :	1 mg/ml

Storage Stability : -15°C to -25°C/1 year(Do not lower than -25°C)

Observed Band : 190kD

Cell Pathway : mTOR;

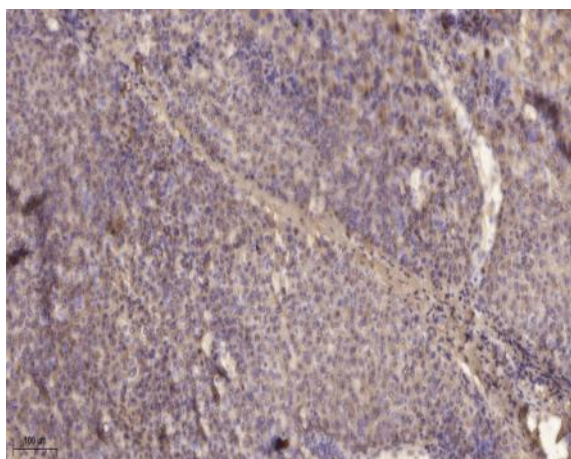
Background : RICTOR and MTOR (FRAP1; MIM 601231) are components of a protein complex that integrates nutrient- and growth factor-derived signals to regulate cell growth (Sarbasov et al., 2004 [PubMed 15268862]).[supplied by OMIM, Mar 2008],

Function : function:Plays an essential role in embryonic growth and development (By similarity). Part of the TORC2 complex which plays a critical role in AKT1 'Ser-473' phosphorylation, and may modulate the phosphorylation of PKCA and regulate actin cytoskeleton organization.,similarity:Belongs to the pianissimo family.,subunit:Forms part of the target of rapamycin 2 complex (TORC2) comprised of FRAP1, LST8, PROTOR1, RICTOR and MAPKAP1. TORC2 does not bind to and is not sensitive to FKBP12-rapamycin. Binds directly to FRAP1 and PROTOR1 within the TORC2 complex. May interact with PROTOR2.,

Subcellular Location : cytosol,TORC2 complex,

Expression : Amygdala,Brain,Epithelium,Lymph,

Products Images



Immunohistochemical analysis of paraffin-embedded human liver cancer. 1, Antibody was diluted at 1:200(4° overnight). 2, Tris-EDTA,pH9.0 was used for antigen retrieval. 3,Secondary antibody was diluted at 1:200(room temperature, 45min).