

MCM3 (Phospho Ser112) rabbit pAb

Catalog No :	YP1398
Reactivity :	Human;Rat;Mouse;
Applications :	WB;ELISA;IHC
Target :	MCM3
Fields :	>>DNA replication;>>Cell cycle
Gene Name :	MCM3
Protein Name :	MCM3 (Ser112)
Human Gene Id :	4172
Human Swiss Prot No :	P25205
Mouse Gene Id :	17215
Mouse Swiss Prot No :	P25206
Immunogen :	Synthesized phospho peptide around human MCM3 (Ser112)
Specificity :	This antibody detects endogenous levels of Human MCM3 (phospho-Ser112)
Formulation :	Liquid in PBS containing 50% glycerol, 0.5% BSA and 0.02% sodium azide.
Source :	Polyclonal, Rabbit,IgG
Dilution :	WB 1:500-2000;IHC 1:50-300; ELISA 2000-20000
Purification :	The antibody was affinity-purified from rabbit serum by affinity-chromatography using specific immunogen.
Concentration :	1 mg/ml

Storage Stability : -15°C to -25°C/1 year(Do not lower than -25°C)

Observed Band : 89kD

Cell Pathway : DNA replication;Cell_Cycle_G1S;Cell_Cycle_G2M_DNA;

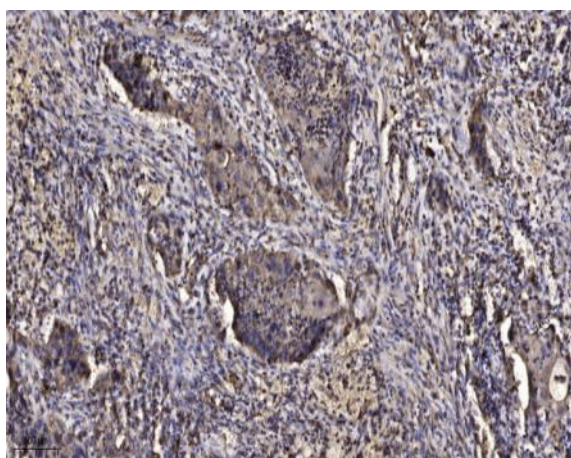
Background : The protein encoded by this gene is one of the highly conserved mini-chromosome maintenance proteins (MCM) that are involved in the initiation of eukaryotic genome replication. The hexameric protein complex formed by MCM proteins is a key component of the pre-replication complex (pre_RC) and may be involved in the formation of replication forks and in the recruitment of other DNA replication related proteins. This protein is a subunit of the protein complex that consists of MCM2-7. It has been shown to interact directly with MCM5/CDC46. This protein also interacts with and is acetylated by MCM3AP, a chromatin-associated acetyltransferase. The acetylation of this protein inhibits the initiation of DNA replication and cell cycle progression. Two transcript variants encoding different isoforms have been found for this gene. [provided by RefSeq, Jul 2012],

Function : function:Acts as a factor that allows the DNA to undergo a single round of replication per cell cycle. Required for DNA replication and cell proliferation.,miscellaneous:Associated with the replication-specific DNA polymerase alpha.,PTM:Phosphorylated upon DNA damage, probably by ATM or ATR.,similarity:Belongs to the MCM family.,similarity:Contains 1 MCM domain.,

Subcellular Location : Nucleus . Chromosome . Associated with chromatin before the formation of nuclei and detaches from it as DNA replication progresses. .

Expression : Cervix,Coronary artery,Epithelium,Lymph,Osteosarcoma,Pancre

Products Images



Immunohistochemical analysis of paraffin-embedded human Squamous cell carcinoma of lung. 1, Antibody was diluted at 1:200(4° overnight). 2, Tris-EDTA,pH9.0 was used for antigen retrieval. 3,Secondary antibody was diluted at 1:200(room temperature, 45min).