

**M-CSF Receptor (Phospho Tyr923) rabbit pAb**

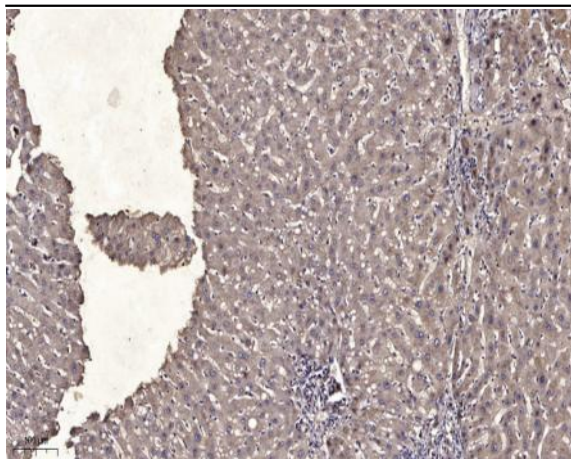
<b>Catalog No :</b>	YP1400
<b>Reactivity :</b>	Human;Rat;Mouse;
<b>Applications :</b>	WB;IHC
<b>Target :</b>	M-CSFR
<b>Fields :</b>	>>MAPK signaling pathway;>>Ras signaling pathway;>>Rap1 signaling pathway;>>Cytokine-cytokine receptor interaction;>>Viral protein interaction with cytokine and cytokine receptor;>>PI3K-Akt signaling pathway;>>Osteoclast differentiation;>>Hematopoietic cell lineage;>>Pathways in cancer;>>Transcriptional misregulation in cancer;>>Acute myeloid leukemia
<b>Gene Name :</b>	CSF1R FMS
<b>Protein Name :</b>	M-CSF Receptor (Tyr923)
<b>Human Gene Id :</b>	1436
<b>Human Swiss Prot No :</b>	P07333
<b>Mouse Gene Id :</b>	12978
<b>Mouse Swiss Prot No :</b>	P09581
<b>Rat Swiss Prot No :</b>	Q00495
<b>Immunogen :</b>	Synthesized phosho peptide around human M-CSF Receptor (Tyr923)
<b>Specificity :</b>	This antibody detects endogenous levels of Human M-CSF Receptor (phospho-Tyr923)
<b>Formulation :</b>	Liquid in PBS containing 50% glycerol, 0.5% BSA and 0.02% sodium azide.
<b>Source :</b>	Polyclonal, Rabbit,IgG
<b>Dilution :</b>	WB 1:500-2000;IHC 1:50-300

---

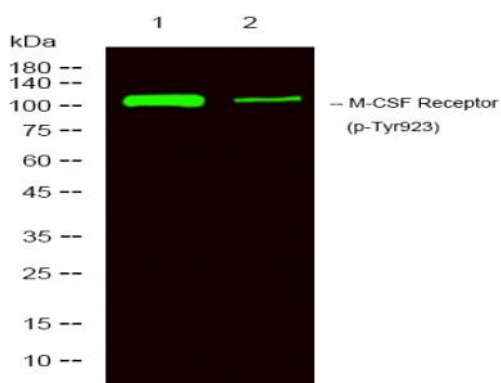
<b>Purification :</b>	The antibody was affinity-purified from rabbit serum by affinity-chromatography using specific immunogen.
<b>Concentration :</b>	1 mg/ml
<b>Storage Stability :</b>	-15°C to -25°C/1 year(Do not lower than -25°C)
<b>Observed Band :</b>	130-170kD
<b>Cell Pathway :</b>	Cytokine-cytokine receptor interaction;Endocytosis;Hematopoietic cell lineage;Pathways in cancer;
<b>Background :</b>	<p>The protein encoded by this gene is the receptor for colony stimulating factor 1, a cytokine which controls the production, differentiation, and function of macrophages. This receptor mediates most if not all of the biological effects of this cytokine. Ligand binding activates the receptor kinase through a process of oligomerization and transphosphorylation. The encoded protein is a tyrosine kinase transmembrane receptor and member of the CSF1/PDGF receptor family of tyrosine-protein kinases. Mutations in this gene have been associated with a predisposition to myeloid malignancy. The first intron of this gene contains a transcriptionally inactive ribosomal protein L7 processed pseudogene oriented in the opposite direction. Alternative splicing results in multiple transcript variants. [provided by RefSeq, Dec 2013],</p>
<b>Function :</b>	<p>catalytic activity:ATP + a [protein]-L-tyrosine = ADP + a [protein]-L-tyrosine phosphate.,function:Protein tyrosine-kinase transmembrane receptor for CSF1 and IL34.,similarity:Belongs to the protein kinase superfamily. Tyr protein kinase family.,similarity:Belongs to the protein kinase superfamily. Tyr protein kinase family. CSF-1/PDGF receptor subfamily.,similarity:Contains 1 protein kinase domain.,similarity:Contains 5 Ig-like C2-type (immunoglobulin-like) domains.,subunit:Interacts with INPPL1/SHIP2 and THOC5.,tissue specificity:Expressed in bone marrow and in differentiated blood mononuclear cells.,</p>
<b>Subcellular Location :</b>	Cell membrane; Single-pass type I membrane protein.
<b>Expression :</b>	Expressed in bone marrow and in differentiated blood mononuclear cells.

---

## Products Images



Immunohistochemical analysis of paraffin-embedded human liver cancer. 1, Antibody was diluted at 1:200(4° overnight). 2, Tris-EDTA,pH9.0 was used for antigen retrieval. 3,Secondary antibody was diluted at 1:200(room temperature, 45min).



Western Blot analysis of 1 HeLa, 2 treated with LPS 100ng/mL 20min,using primary antibody at 1:1000 dilution. Secondary antibody(catalog#:RS23920) was diluted at 1:10000