

**MKK7 (Phospho Ser271/Thr275) rabbit pAb**

<b>Catalog No :</b>	YP1404
<b>Reactivity :</b>	Human;Rat;Mouse;
<b>Applications :</b>	WB;ELISA;IHC
<b>Target :</b>	MKK7
<b>Fields :</b>	>>MAPK signaling pathway;>>ErbB signaling pathway;>>Protein processing in endoplasmic reticulum;>>Osteoclast differentiation;>>Tight junction;>>Toll-like receptor signaling pathway;>>T cell receptor signaling pathway;>>Fc epsilon RI signaling pathway;>>TNF signaling pathway;>>Neurotrophin signaling pathway;>>GnRH signaling pathway;>>Relaxin signaling pathway;>>Alcoholic liver disease;>>Alzheimer disease;>>Huntington disease;>>Pathways of neurodegeneration - multiple diseases;>>Salmonella infection;>>Yersinia infection;>>Hepatitis B;>>Kaposi sarcoma-associated herpesvirus infection;>>Epstein-Barr virus infection;>>Human immunodeficiency virus 1 infection;>>Chemical carcinogenesis - reactive oxygen species;>>Lipid and atherosclerosis;>>Fluid shear stress and atherosclerosis
<b>Gene Name :</b>	MAP2K7 JNKK2 MEK7 MKK7 PRKMK7 SKK4
<b>Protein Name :</b>	MKK7 (Ser271/Thr275)
<b>Human Gene Id :</b>	5609
<b>Human Swiss Prot No :</b>	O14733
<b>Mouse Gene Id :</b>	26400
<b>Mouse Swiss Prot No :</b>	Q8CE90
<b>Rat Gene Id :</b>	363855
<b>Rat Swiss Prot No :</b>	Q4KSH7
<b>Immunogen :</b>	Synthesized phospho peptide around human MKK7 (Ser271 and Thr275)
<b>Specificity :</b>	This antibody detects endogenous levels of Human MKK7 (phospho-Ser271 or

Thr275)

---

**Formulation :** Liquid in PBS containing 50% glycerol, 0.5% BSA and 0.02% sodium azide.

---

**Source :** Polyclonal, Rabbit,IgG

---

**Dilution :** WB 1:500-2000;IHC 1:50-300; ELISA 2000-20000

---

**Purification :** The antibody was affinity-purified from rabbit serum by affinity-chromatography using specific immunogen.

---

**Concentration :** 1 mg/ml

---

**Storage Stability :** -15°C to -25°C/1 year(Do not lower than -25°C)

---

**Observed Band :** 47kD

---

**Cell Pathway :** MAPK\_ERK\_Growth;MAPK\_G\_Protein;ErbB\_HER;Toll\_Like;T\_Cell\_Receptor;F c epsilon RI;Neurotrophin;GnRH;

---

**Background :** The protein encoded by this gene is a dual specificity protein kinase that belongs to the MAP kinase kinase family. This kinase specifically activates MAPK8/JNK1 and MAPK9/JNK2, and this kinase itself is phosphorylated and activated by MAP kinase kinase kinases including MAP3K1/MEKK1, MAP3K2/MEKK2,MAP3K3/MEKK5, and MAP4K2/GCK. This kinase is involved in the signal transduction mediating the cell responses to proinflammatory cytokines, and environmental stresses. Alternative splicing results in multiple transcript variants. [provided by RefSeq, Jul 2014],

---

**Function :** catalytic activity:ATP + a protein = ADP + a phosphoprotein.,cofactor:Magnesium.,enzyme regulation:Activated by phosphorylation by specific MAP kinase kinase kinases such as MAP3K1/MEKK1, MAP3K3/MEKK3, MAP3K11/MLK3 and MAP3K12/DLK.,function:Stress activated, dual specificity kinase that activates the JUN kinases MAPK8/JNK1, MAPK9/JNK2 and MAPK10/JNK3.,PTM:Activated by phosphorylation on Ser/Thr.,similarity:Belongs to the protein kinase superfamily. STE Ser/Thr protein kinase family. MAP kinase kinase subfamily.,similarity:Contains 1 protein kinase domain.,tissue specificity:Ubiquitous; with highest level of expression in skeletal muscle. Isoform 3 is found at low levels in placenta, fetal liver, and skeletal muscle.,

---

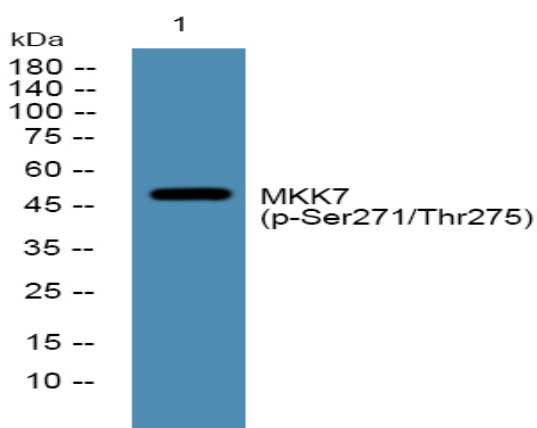
**Subcellular Location :** Nucleus. Cytoplasm .

---

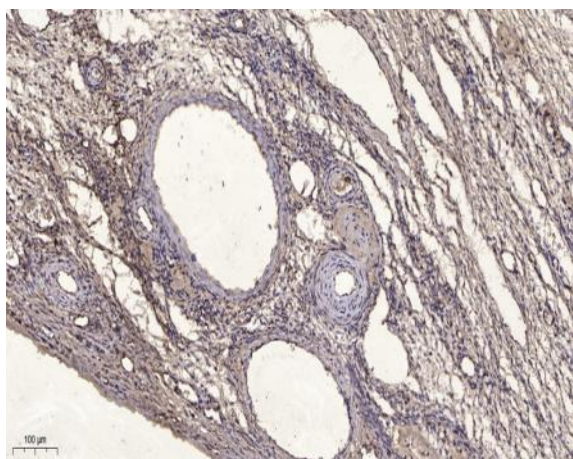
**Expression :** Ubiquitous; with highest level of expression in skeletal muscle. Isoform 3 is found at low levels in placenta, fetal liver, and skeletal muscle.

---

## Products Images



Western blot analysis of lysates from KB cells, primary antibody was diluted at 1:1000, 4° over night



Immunohistochemical analysis of paraffin-embedded human oophoroma. 1, Antibody was diluted at 1:200(4° overnight). 2, Tris-EDTA,pH9.0 was used for antigen retrieval. 3,Secondary antibody was diluted at 1:200(room temperature, 45min).