

**REPS1 (Phospho Ser709) rabbit pAb**

<b>Catalog No :</b>	YP1464
<b>Reactivity :</b>	Human;Rat;Mouse;
<b>Applications :</b>	WB;IHC
<b>Target :</b>	REPS1
<b>Gene Name :</b>	REPS1
<b>Protein Name :</b>	REPS1 (Ser709)
<b>Human Gene Id :</b>	85021
<b>Human Swiss Prot No :</b>	Q96D71
<b>Mouse Gene Id :</b>	19707
<b>Mouse Swiss Prot No :</b>	O54916
<b>Immunogen :</b>	Synthesized phospho peptide around human REPS1 (Ser709)
<b>Specificity :</b>	This antibody detects endogenous levels of Human REPS1 (phospho-Ser709)
<b>Formulation :</b>	Liquid in PBS containing 50% glycerol, 0.5% BSA and 0.02% sodium azide.
<b>Source :</b>	Polyclonal, Rabbit,IgG
<b>Dilution :</b>	WB 1:500-2000;IHC 1:50-300
<b>Purification :</b>	The antibody was affinity-purified from rabbit serum by affinity-chromatography using specific immunogen.
<b>Concentration :</b>	1 mg/ml
<b>Storage Stability :</b>	-15°C to -25°C/1 year(Do not lower than -25°C)

---

**Observed Band :** 80kD

---

**Background :** This gene encodes a signaling adaptor protein with two EH domains that interacts with proteins that participate in signaling, endocytosis and cytoskeletal changes. The encoded protein has been found in association with intersectin 1 and Src homology 3-domain growth factor receptor-bound 2-like (endophilin) interacting protein 1 when intersectin 1 was isolated from clathrin-coated pits. The encoded protein has also been shown to interact with amphiphysin, a cytoplasmic protein at the surface of synaptic vesicles. Alternative splicing results in multiple transcript variants encoding different isoforms. [provided by RefSeq, Mar 2014],

---

**Function :** function:May coordinate the cellular actions of activated EGF receptors and Ral-GTPases.,PTM:EGF stimulates phosphorylation on Tyr-residues.,similarity:Contains 1 EF-hand domain.,similarity:Contains 1 EH domain.,subunit:Homodimer (Potential). Interacts with RAB11FIP2. Interacts with RALBP1, CRK and GRB2. Binding to RALBP1 does not affect its Ral-binding activity. Forms a complex with the SH3 domains of CRK and GRB2 which may link it to an EGF-responsive tyrosine kinase.,

---

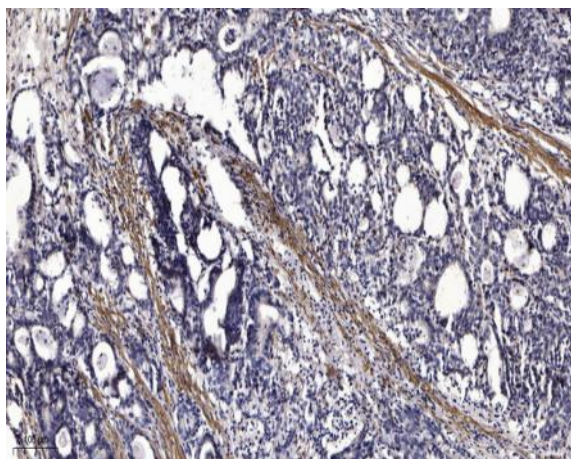
**Subcellular Location :** Membrane, clathrin-coated pit . Colocalize with ITSN1 at the plasma membrane in structures that are most probably clathrin-coated pits.

---

**Expression :** Widely expressed with highest levels in heart and testis.

---

## Products Images



Immunohistochemical analysis of paraffin-embedded human Gastric adenocarcinoma. 1, Antibody was diluted at 1:200(4° overnight). 2, Tris-EDTA,pH9.0 was used for antigen retrieval. 3,Secondary antibody was diluted at 1:200(room temperature, 45min).