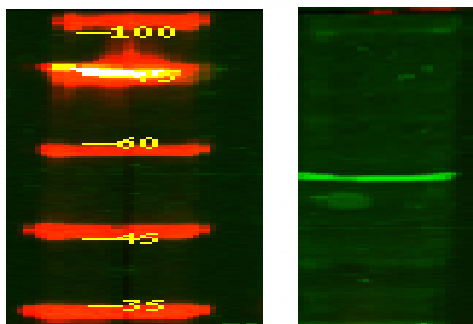


ENDD1 Polyclonal Antibody

Catalog No :	YN0698
Reactivity :	Human;Mouse
Applications :	WB;ELISA
Target :	ENDD1
Gene Name :	ENDOD1 KIAA0830
Protein Name :	Endonuclease domain-containing 1 protein (EC 3.1.30.-)
Human Gene Id :	23052
Human Swiss Prot No :	O94919
Mouse Swiss Prot No :	Q8C522
Immunogen :	Synthesized peptide derived from part region of human protein
Specificity :	ENDD1 Polyclonal Antibody detects endogenous levels of protein.
Formulation :	Liquid in PBS containing 50% glycerol, and 0.02% sodium azide.
Source :	Polyclonal, Rabbit,IgG
Dilution :	WB 1:500-2000 ELISA 1:5000-20000
Purification :	The antibody was affinity-purified from rabbit antiserum by affinity-chromatography using epitope-specific immunogen.
Concentration :	1 mg/ml
Storage Stability :	-15°C to -25°C/1 year(Do not lower than -25°C)
Observed Band :	55kD

Cell Pathway :	<u>Apoptosis_Inhibition;Apoptosis_Mitochondrial;Apoptosis_Overview;</u>
Background :	<u>function:May act as a DNase and a RNase .,similarity:Belongs to the DNA/RNA non-specific endonuclease family.,</u>
Function :	<u>function:May act as a DNase and a RNase .,similarity:Belongs to the DNA/RNA non-specific endonuclease family.,</u>
Subcellular Location :	<u>Secreted .</u>
Expression :	<u>Brain,Platelet,</u>

Products Images



Western Blot analysis of HEK293 lysis, using primary antibody at 1:1000 dilution. Secondary antibody(catalog#:RS23920) was diluted at 1:10000