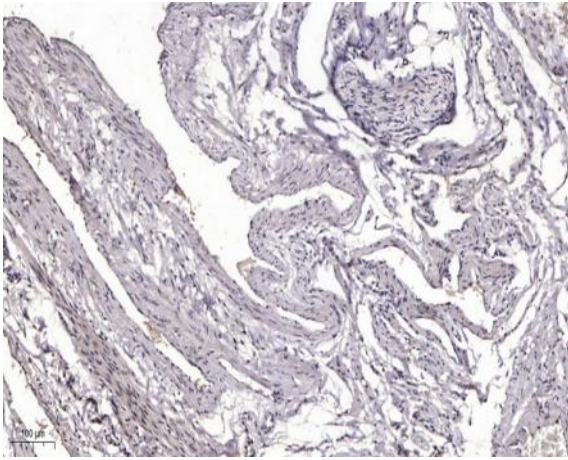


Syk (Phospho Ser297) rabbit pAb

Catalog No :	YP1519
Reactivity :	Human;Rat;Mouse;
Applications :	WB;IHC
Target :	Syk
Fields :	>>NF-kappa B signaling pathway;>>Phospholipase D signaling pathway;>>PI3K-Akt signaling pathway;>>Osteoclast differentiation;>>Platelet activation;>>Neutrophil extracellular trap formation;>>C-type lectin receptor signaling pathway;>>Natural killer cell mediated cytotoxicity;>>B cell receptor signaling pathway;>>Fc epsilon RI signaling pathway;>>Fc gamma R-mediated phagocytosis;>>Tuberculosis;>>Kaposi sarcoma-associated herpesvirus infection;>>Herpes simplex virus 1 infection;>>Epstein-Barr virus infection;>>Coronavirus disease - COVID-19;>>Viral carcinogenesis
Gene Name :	SYK
Protein Name :	Syk (Ser297)
Human Gene Id :	6850
Human Swiss Prot No :	P43405
Mouse Gene Id :	20963
Mouse Swiss Prot No :	P48025
Rat Gene Id :	25155
Rat Swiss Prot No :	Q64725
Immunogen :	Synthesized phospho peptide around human Syk (Ser297)
Specificity :	This antibody detects endogenous levels of Human Syk (phospho-Ser297)
Formulation :	Liquid in PBS containing 50% glycerol, 0.5% BSA and 0.02% sodium azide.

Source :	Polyclonal, Rabbit,IgG
Dilution :	WB 1:500-2000;IHC 1:50-300
Purification :	The antibody was affinity-purified from rabbit serum by affinity-chromatography using specific immunogen.
Concentration :	1 mg/ml
Storage Stability :	-15°C to -25°C/1 year(Do not lower than -25°C)
Observed Band :	72kD
Cell Pathway :	Natural killer cell mediated cytotoxicity;B_Cell_Antigen;Fc epsilon RI;Fc gamma R-mediated phagocytosis;
Background :	This gene encodes a member of the family of non-receptor type Tyr protein kinases. This protein is widely expressed in hematopoietic cells and is involved in coupling activated immunoreceptors to downstream signaling events that mediate diverse cellular responses, including proliferation, differentiation, and phagocytosis. It is thought to be a modulator of epithelial cell growth and a potential tumour suppressor in human breast carcinomas. Alternatively spliced transcript variants encoding different isoforms have been found for this gene. [provided by RefSeq, Mar 2010],
Function :	catalytic activity:ATP + a [protein]-L-tyrosine = ADP + a [protein]-L-tyrosine phosphate.,function:Positive effector of BCR-stimulated responses. Couples the B-cell antigen receptor (BCR) to the mobilization of calcium ion either through a phosphoinositide 3-kinase-dependent pathway, when not phosphorylated on tyrosines of the linker region, or through a phospholipase C-gamma-dependent pathway, when phosphorylated on Tyr-348 and Tyr-352. Thus the differential phosphorylation of Syk can determine the pathway by which BCR is coupled to the regulation of intracellular calcium ion.,PTM:Autophosphorylated.,PTM:Phosphorylation on Tyr-323 creates a binding site for c-Cbl, an adapter protein that serves as a negative regulator of BCR-stimulated calcium ion signaling.,PTM:Phosphorylation on Tyr-348 and Tyr-352 enhances the phosphorylation and activation of phospholipase C-gamma and the early phas
Subcellular Location :	Cell membrane . Cytoplasm, cytosol .
Expression :	Widely expressed in hematopoietic cells (at protein level) (PubMed:8163536). Expressed in neutrophils (at protein level) (PubMed:15123770). Within the B-cell compartment, expressed from pro- and pre-B cells to plasma cells (PubMed:8163536).

Products Images



Immunohistochemical analysis of paraffin-embedded human oophoroma. 1, Antibody was diluted at 1:200(4° overnight). 2, Tris-EDTA,pH9.0 was used for antigen retrieval. 3,Secondary antibody was diluted at 1:200(room temperature, 45min).