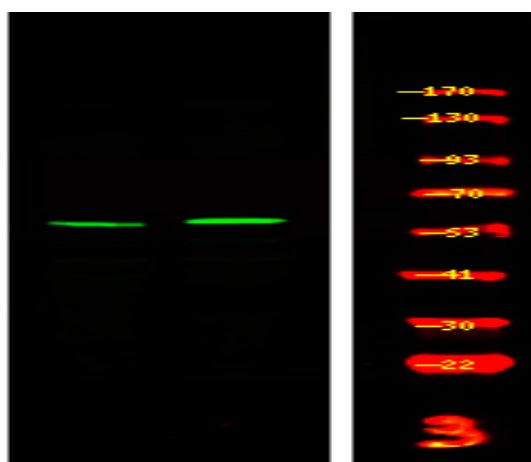


CSK (Phospho Tyr304) Rabbit pAb

Catalog No :	YP1858
Reactivity :	Human;Mouse;Rat
Applications :	IHC;WB
Target :	Csk
Fields :	>>Epithelial cell signaling in Helicobacter pylori infection
Gene Name :	CSK
Protein Name :	Tyrosine-protein kinase CSK (EC 2.7.10.2) (C-Src kinase) (Protein-tyrosine kinase CYL)
Sequence :	P41240
Human Gene Id :	1445
Human Swiss Prot No :	P41240
Mouse Gene Id :	12988
Mouse Swiss Prot No :	P41241
Rat Gene Id :	315707
Rat Swiss Prot No :	P32577
Immunogen :	Synthesized peptide derived from human CSK (Phospho Tyr304)
Specificity :	This antibody detects endogenous levels of CSK (Phospho Tyr304) Rabbit pAb at Human, Mouse,Rat
Formulation :	Liquid in PBS containing 50% glycerol, and 0.02% sodium azide.
Source :	Rabbit,polyclonal

Dilution :	WB 1:500-2000 IHC 1:50-200
Purification :	The antibody was affinity-purified from rabbit serum by affinity-chromatography using specific immunogen.
Concentration :	1 mg/ml
Storage Stability :	-15°C to -25°C/1 year(Do not lower than -25°C)
Observed Band :	55kD
Function :	<p>catalytic activity:ATP + a [protein]-L-tyrosine = ADP + a [protein]-L-tyrosine phosphate.,function:Specifically phosphorylates 'Tyr-504' on LCK, which acts as a negative regulatory site. Can also act on the LYN and FYN kinases.,PTM:Autophosphorylation of Tyr-304 occurs only at abnormally high CSK concentrations in vitro.,similarity:Belongs to the protein kinase superfamily. Tyr protein kinase family.,similarity:Belongs to the protein kinase superfamily. Tyr protein kinase family. CSK subfamily.,similarity:Contains 1 protein kinase domain.,similarity:Contains 1 SH2 domain.,similarity:Contains 1 SH3 domain.,subcellular location:Mainly cytoplasmic, also present in lipid rafts.,subunit:Interacts with PTPN8 (By similarity). Interacts with phosphorylated SIT1, PAG1, LIME1 and TGFB1I1.,tissue specificity:Expressed in lung and macrophages.,</p>
Subcellular Location :	Cytoplasm . Cell membrane . Mainly cytoplasmic, also present in lipid rafts. .
Expression :	Expressed in lung and macrophages.

Products Images



Western Blot analysis of 1 MCF-7 cell, 2 LPS 100ng/mL 30min treated ,using primary antibody at 1:1000 dilution. Secondary antibody(catalog#:RS23920) was diluted at 1:10000